

JMJD2A Antibody (N-term)
Purified Rabbit Polyclonal Antibody (Pab)
Catalog # AP1046a

Specification

JMJD2A Antibody (N-term) - Product Information

Application	WB,E
Primary Accession	O75164
Other Accession	NP_055478
Reactivity	Human
Host	Rabbit
Clonality	Polyclonal
Isotype	Rabbit IgG
Calculated MW	120662
Antigen Region	527-559

JMJD2A Antibody (N-term) - Additional Information

Gene ID 9682

Other Names

Lysine-specific demethylase 4A, 11411-, JmjC domain-containing histone demethylation protein 3A, Jumonji domain-containing protein 2A, KDM4A, JHDM3A, JMJD2, JMJD2A, KIAA0677

Target/Specificity

This JMJD2A antibody is generated from rabbits immunized with a KLH conjugated synthetic peptide between 527-559 amino acids from the N-terminal region of human JMJD2A.

Dilution

WB~~1:1000

Format

Purified polyclonal antibody supplied in PBS with 0.09% (W/V) sodium azide. This antibody is prepared by Saturated Ammonium Sulfate (SAS) precipitation followed by dialysis against PBS.

Storage

Maintain refrigerated at 2-8°C for up to 2 weeks. For long term storage store at -20°C in small aliquots to prevent freeze-thaw cycles.

Precautions

JMJD2A Antibody (N-term) is for research use only and not for use in diagnostic or therapeutic procedures.

JMJD2A Antibody (N-term) - Protein Information

Name KDM4A

Synonyms JHDM3A, JMJD2, JMJD2A, KIAA0677

Function Histone demethylase that specifically demethylates 'Lys-9' and 'Lys-36' residues of histone H3, thereby playing a central role in histone code (PubMed:[26741168](#), PubMed:[21768309](#)). Does not demethylate histone H3 'Lys-4', H3 'Lys-27' nor H4 'Lys-20'. Demethylates trimethylated H3 'Lys-9' and H3 'Lys-36' residue, while it has no activity on mono- and dimethylated residues. Demethylation of Lys residue generates formaldehyde and succinate. Participates in transcriptional repression of ASCL2 and E2F-responsive promoters via the recruitment of histone deacetylases and NCOR1, respectively.

Cellular Location

Nucleus {ECO:0000255|PROSITE-ProRule:PRU00537, ECO:0000269|PubMed:15927959, ECO:0000269|PubMed:16024779}

Tissue Location

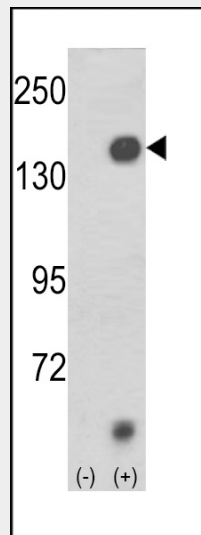
Ubiquitous..

JMJD2A Antibody (N-term) - Protocols

Provided below are standard protocols that you may find useful for product applications.

- [Western Blot](#)
- [Blocking Peptides](#)
- [Dot Blot](#)
- [Immunohistochemistry](#)
- [Immunofluorescence](#)
- [Immunoprecipitation](#)
- [Flow Cytometry](#)
- [Cell Culture](#)

JMJD2A Antibody (N-term) - Images



Western blot analysis of JMJD2A (arrow) using rabbit polyclonal JMJD2A (N-term) (Cat. #AP1046a). 293 cell lysates (2 ug/lane) either nontransfected (Lane 1) or transiently transfected with the JMJD2A gene (Lane 2) (Origene Technologies).

JMJD2A Antibody (N-term) - Background

JMJD2A is a member of the Jumonji domain 2 (JMJD2) family and a protein containing a JmjN

domain, a JmjC domain, a JD2H domain, two TUDOR domains, and two PHD-type zinc fingers. This protein functions as a trimethylation-specific demethylase, converting specific trimethylated histone residues to the dimethylated form, and as a transcriptional repressor.

JMJD2A Antibody (N-term) - References

Gray S.G., Iglesias A.H.J. Biol. Chem. 280:28507-28518(2005)
Zhang D., Yoon H.-G. Mol. Cell. Biol. 25:6404-6414(2005)
Whetstine J.R., Nottke A. Cell 125:467-481(2006)