

**SELPLG Antibody (C-term)**  
**Affinity Purified Rabbit Polyclonal Antibody (Pab)**  
**Catalog # AP10468b**

**Specification**

---

**SELPLG Antibody (C-term) - Product Information**

Application	WB, FC,E
Primary Accession	<a href="#">O14242</a>
Other Accession	<a href="#">NP_002997.1</a>
Reactivity	Human
Host	Rabbit
Clonality	Polyclonal
Isotype	Rabbit IgG
Calculated MW	43201
Antigen Region	379-405

**SELPLG Antibody (C-term) - Additional Information**

**Gene ID** 6404

**Other Names**

P-selectin glycoprotein ligand 1, PSGL-1, Selectin P ligand, CD162, SELPLG

**Target/Specificity**

This SELPLG antibody is generated from rabbits immunized with a KLH conjugated synthetic peptide between 379-405 amino acids from the C-terminal region of human SELPLG.

**Dilution**

WB~~1:1000

FC~~1:10~50

**Format**

Purified polyclonal antibody supplied in PBS with 0.09% (W/V) sodium azide. This antibody is purified through a protein A column, followed by peptide affinity purification.

**Storage**

Maintain refrigerated at 2-8°C for up to 2 weeks. For long term storage store at -20°C in small aliquots to prevent freeze-thaw cycles.

**Precautions**

SELPLG Antibody (C-term) is for research use only and not for use in diagnostic or therapeutic procedures.

**SELPLG Antibody (C-term) - Protein Information**

**Name** SELPLG

**Function** A SLe(x)-type proteoglycan, which through high affinity, calcium-dependent interactions

with E-, P- and L-selectins, mediates rapid rolling of leukocytes over vascular surfaces during the initial steps in inflammation. Critical for the initial leukocyte capture.

**Cellular Location**

Membrane; Single-pass type I membrane protein.

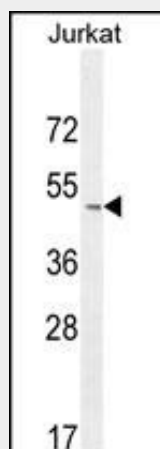
**Tissue Location**

Expressed on neutrophils, monocytes and most lymphocytes

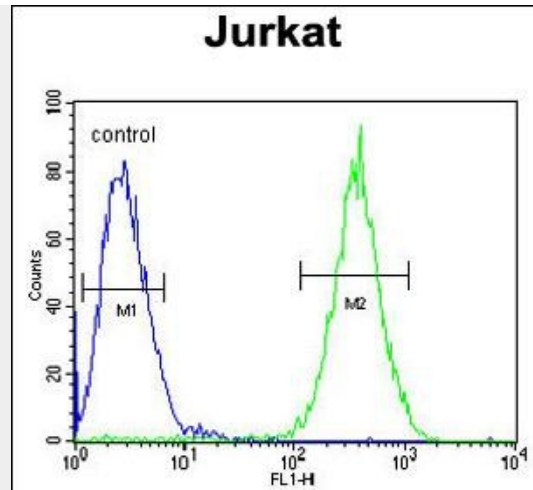
**SELPLG Antibody (C-term) - Protocols**

Provided below are standard protocols that you may find useful for product applications.

- [Western Blot](#)
- [Blocking Peptides](#)
- [Dot Blot](#)
- [Immunohistochemistry](#)
- [Immunofluorescence](#)
- [Immunoprecipitation](#)
- [Flow Cytometry](#)
- [Cell Culture](#)

**SELPLG Antibody (C-term) - Images**

SELPLG Antibody (C-term) (Cat. #AP10468b) western blot analysis in Jurkat cell line lysates (35ug/lane). This demonstrates the SELPLG antibody detected the SELPLG protein (arrow).



SELPLG Antibody (C-term) (Cat. #AP10468b) flow cytometric analysis of Jurkat cells (right histogram) compared to a negative control cell (left histogram). FITC-conjugated goat-anti-rabbit secondary antibodies were used for the analysis.

### **SELPLG Antibody (C-term) - Background**

SELPLG is the high affinity counter-receptor for P-selectin on myeloid cells and stimulated T lymphocytes. As such, it plays a critical role in the tethering of these cells to activated platelets or endothelia expressing P-selectin. The organization of the SELPG gene closely resembles that of CD43 and the human platelet glycoprotein Gplb-alpha both of which have an intron in the 5-prime-noncoding region, a long second exon containing the complete coding region, and TATA-less promoters.

### **SELPLG Antibody (C-term) - References**

- Elmas, E., et al. J. Cardiovasc. Electrophysiol. 21(11):1260-1265(2010)
- Luan, S.L., et al. J. Pathol. 222(2):166-179(2010)
- Bailey, S.D., et al. Diabetes Care 33(10):2250-2253(2010)
- Russo, H.M., et al. Circ. Res. 107(3):388-397(2010)
- Dick, D.M., et al. Mol. Psychiatry (2010) In press :