

TINAGL1 Antibody (C-term)
Affinity Purified Rabbit Polyclonal Antibody (Pab)
Catalog # AP10392b

Specification

TINAGL1 Antibody (C-term) - Product Information

Application	WB,E
Primary Accession	O9GZM7
Other Accession	NP_071447.1
Reactivity	Human, Mouse
Host	Rabbit
Clonality	Polyclonal
Isotype	Rabbit IgG
Calculated MW	52387
Antigen Region	370-398

TINAGL1 Antibody (C-term) - Additional Information

Gene ID 64129

Other Names

Tubulointerstitial nephritis antigen-like, Glucocorticoid-inducible protein 5, Oxidized LDL-responsive gene 2 protein, OLRG-2, Tubulointerstitial nephritis antigen-related protein, TIN Ag-related protein, TIN-Ag-RP, TINAGL1, GIS5, LCN7, OLRG2, TINAGL

Target/Specificity

This TINAGL1 antibody is generated from rabbits immunized with a KLH conjugated synthetic peptide between 370-398 amino acids from the C-terminal region of human TINAGL1.

Dilution

WB~~1:1000

Format

Purified polyclonal antibody supplied in PBS with 0.09% (W/V) sodium azide. This antibody is purified through a protein A column, followed by peptide affinity purification.

Storage

Maintain refrigerated at 2-8°C for up to 2 weeks. For long term storage store at -20°C in small aliquots to prevent freeze-thaw cycles.

Precautions

TINAGL1 Antibody (C-term) is for research use only and not for use in diagnostic or therapeutic procedures.

TINAGL1 Antibody (C-term) - Protein Information

Name TINAGL1

Synonyms GIS5, LCN7, OLRG2, TINAGL

Function May be implicated in the adrenocortical zonation and in mechanisms for repressing the CYP11B1 gene expression in adrenocortical cells. This is a non catalytic peptidase C1 family protein (By similarity).

Cellular Location

Secreted

Tissue Location

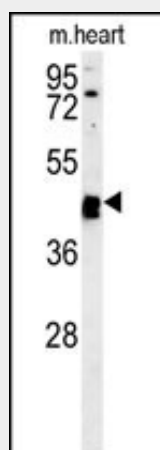
Highly expressed in aorta, heart, placenta, kidney and a colorectal adenocarcinoma cell line. Moderately expressed in skeletal muscle, pancreas, lung, lymph nodes, adrenal gland, bone marrow and thyroid. Weakly expressed in colon, small intestine, ovary, spleen, testis and prostate. Predominantly found in vascular smooth muscle cells, but also in cardiac and skeletal muscle cells as well as kidney.

TINAGL1 Antibody (C-term) - Protocols

Provided below are standard protocols that you may find useful for product applications.

- [Western Blot](#)
- [Blocking Peptides](#)
- [Dot Blot](#)
- [Immunohistochemistry](#)
- [Immunofluorescence](#)
- [Immunoprecipitation](#)
- [Flow Cytometry](#)
- [Cell Culture](#)

TINAGL1 Antibody (C-term) - Images



TINAGL1 Antibody (C-term) (Cat. #AP10392b) western blot analysis in mouse heart tissue lysates (15ug/lane). This demonstrates the TINAGL1 antibody detected TINAGL1 protein (arrow).

TINAGL1 Antibody (C-term) - References

- Wan, D., et al. Proc. Natl. Acad. Sci. U.S.A. 101(44):15724-15729(2004)
Zhang, Z., et al. Protein Sci. 13(10):2819-2824(2004)
Colland, F., et al. Genome Res. 14(7):1324-1332(2004)
Clark, H.F., et al. Genome Res. 13(10):2265-2270(2003)

Jiang, L.Q., et al. Hypertens. Res. 25(4):647-652(2002)