

RNF183 Antibody (Center)
Affinity Purified Rabbit Polyclonal Antibody (Pab)
Catalog # AP10358c

Specification

RNF183 Antibody (Center) - Product Information

| | |
|-------------------|---|
| Application | WB,E |
| Primary Accession | O96D59 |
| Other Accession | O8QZS5 , Q3SWY0 , NP_659488.2 |
| Reactivity | Human, Mouse |
| Predicted | Bovine |
| Host | Rabbit |
| Clonality | Polyclonal |
| Isotype | Rabbit IgG |
| Calculated MW | 21617 |
| Antigen Region | 86-114 |

RNF183 Antibody (Center) - Additional Information

Gene ID 138065

Other Names

RING finger protein 183, RNF183

Target/Specificity

This RNF183 antibody is generated from rabbits immunized with a KLH conjugated synthetic peptide between 86-114 amino acids from the Central region of human RNF183.

Dilution

WB~~1:1000

Format

Purified polyclonal antibody supplied in PBS with 0.09% (W/V) sodium azide. This antibody is purified through a protein A column, followed by peptide affinity purification.

Storage

Maintain refrigerated at 2-8°C for up to 2 weeks. For long term storage store at -20°C in small aliquots to prevent freeze-thaw cycles.

Precautions

RNF183 Antibody (Center) is for research use only and not for use in diagnostic or therapeutic procedures.

RNF183 Antibody (Center) - Protein Information

Name RNF183

Function Acts as an E3 ubiquitin ligase catalyzing the covalent attachment of ubiquitin moieties

onto substrate proteins (PubMed:[29507230](#)). Triggers apoptosis in response to prolonged ER stress by mediating the polyubiquitination and subsequent proteasomal degradation of BCL2L1 (PubMed:[29507230](#)). May collaborate with FATE1 to restrain BIK protein levels thus regulating apoptotic signaling (PubMed:[26567849](#)).

Cellular Location

Endoplasmic reticulum membrane; Single-pass type IV membrane protein. Endoplasmic reticulum. Golgi apparatus, cis-Golgi network membrane {ECO:0000250|UniProtKB:Q8QZS5}. Lysosome membrane {ECO:0000250|UniProtKB:Q8QZS5}

Tissue Location

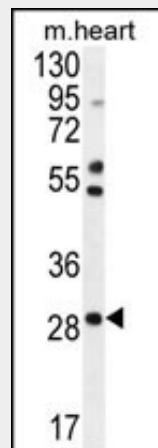
Kidney and testis..

RNF183 Antibody (Center) - Protocols

Provided below are standard protocols that you may find useful for product applications.

- [Western Blot](#)
- [Blocking Peptides](#)
- [Dot Blot](#)
- [Immunohistochemistry](#)
- [Immunofluorescence](#)
- [Immunoprecipitation](#)
- [Flow Cytometry](#)
- [Cell Culture](#)

RNF183 Antibody (Center) - Images



RNF183 Antibody (Center) (Cat. #AP10358c) western blot analysis in mouse heart tissue lysates (35ug/lane). This demonstrates the RNF183 antibody detected the RNF183 protein (arrow).

RNF183 Antibody (Center) - References

Gerhard, D.S., et al. Genome Res. 14 (10B), 2121-2127 (2004) :