

**CASZ1 Antibody (C-term)**  
**Affinity Purified Rabbit Polyclonal Antibody (Pab)**  
**Catalog # AP10238b**

**Specification**

---

**CASZ1 Antibody (C-term) - Product Information**

Application	WB,E
Primary Accession	<a href="#">Q86V15</a>
Other Accession	<a href="#">Q9CWL2</a> , <a href="#">NP_001073312.1</a> , <a href="#">NP_060236.3</a>
Reactivity	Human, Mouse
Host	Rabbit
Clonality	Polyclonal
Isotype	Rabbit IgG
Calculated MW	190069
Antigen Region	1574-1601

**CASZ1 Antibody (C-term) - Additional Information**

**Gene ID** 54897

**Other Names**

Zinc finger protein castor homolog 1, Castor-related protein, Putative survival-related protein, Zinc finger protein 693, CASZ1, CST, SRG, ZNF693

**Target/Specificity**

This CASZ1 antibody is generated from rabbits immunized with a KLH conjugated synthetic peptide between 1574-1601 amino acids from the C-terminal region of human CASZ1.

**Dilution**

WB~~1:1000

**Format**

Purified polyclonal antibody supplied in PBS with 0.09% (W/V) sodium azide. This antibody is purified through a protein A column, followed by peptide affinity purification.

**Storage**

Maintain refrigerated at 2-8°C for up to 2 weeks. For long term storage store at -20°C in small aliquots to prevent freeze-thaw cycles.

**Precautions**

CASZ1 Antibody (C-term) is for research use only and not for use in diagnostic or therapeutic procedures.

**CASZ1 Antibody (C-term) - Protein Information**

**Name** CASZ1

**Synonyms** CST, SRG, ZNF693

**Function** Transcriptional activator (PubMed:[23639441](#), PubMed:[27693370](#)). Involved in vascular assembly and morphogenesis through direct transcriptional regulation of EGFL7 (PubMed:[23639441](#)).

**Cellular Location**  
Nucleus.

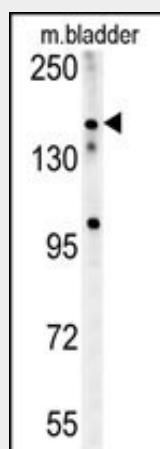
**Tissue Location**  
Expressed in heart, lung, skeletal muscle, pancreas, testis, small intestine, and stomach, but it is not detectable in the adult brain.

### CASZ1 Antibody (C-term) - Protocols

Provided below are standard protocols that you may find useful for product applications.

- [Western Blot](#)
- [Blocking Peptides](#)
- [Dot Blot](#)
- [Immunohistochemistry](#)
- [Immunofluorescence](#)
- [Immunoprecipitation](#)
- [Flow Cytometry](#)
- [Cell Culture](#)

### CASZ1 Antibody (C-term) - Images



CASZ1 Antibody (C-term) (Cat. #AP10238b) western blot analysis in mouse bladder tissue lysates (15ug/lane). This demonstrates the CASZ1 antibody detected CASZ1 protein (arrow).

### CASZ1 Antibody (C-term) - References

- Takeuchi, F., et al. Circulation 121(21):2302-2309(2010)  
Levy, D., et al. Nat. Genet. (2009) In press :  
Fernandez, F., et al. BMC Med. Genet. 8, 57 (2007) :  
Liu, Z., et al. Biochem. Biophys. Res. Commun. 344(3):834-844(2006)  
Yuan, Z.R., et al. Cancer Res. 65(23):10716-10724(2005)