

SPARCL1 Antibody (Center)
Affinity Purified Rabbit Polyclonal Antibody (Pab)
Catalog # AP10208c

Specification

SPARCL1 Antibody (Center) - Product Information

| | |
|-------------------|--|
| Application | WB, IHC-P,E |
| Primary Accession | Q14515 |
| Other Accession | NP_001121782.1 , NP_004675.3 |
| Reactivity | Human |
| Host | Rabbit |
| Clonality | Polyclonal |
| Isotype | Rabbit IgG |
| Calculated MW | 75208 |
| Antigen Region | 208-236 |

SPARCL1 Antibody (Center) - Additional Information

Gene ID 8404

Other Names

SPARC-like protein 1, High endothelial venule protein, Hevin, MAST 9, SPARCL1

Target/Specificity

This SPARCL1 antibody is generated from rabbits immunized with a KLH conjugated synthetic peptide between 208-236 amino acids from the Central region of human SPARCL1.

Dilution

WB~~1:1000
IHC-P~~1:50~100

Format

Purified polyclonal antibody supplied in PBS with 0.09% (W/V) sodium azide. This antibody is purified through a protein A column, followed by peptide affinity purification.

Storage

Maintain refrigerated at 2-8°C for up to 2 weeks. For long term storage store at -20°C in small aliquots to prevent freeze-thaw cycles.

Precautions

SPARCL1 Antibody (Center) is for research use only and not for use in diagnostic or therapeutic procedures.

SPARCL1 Antibody (Center) - Protein Information

Name SPARCL1

Cellular Location

Secreted, extracellular space, extracellular matrix

Tissue Location

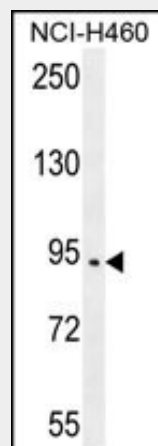
Highly expressed in lymph node, brain, heart, lung, skeletal muscle, ovary, small intestine, and colon, with lower levels in placenta, pancreas, testis, spleen, and thymus, and no expression in kidney, liver, and peripheral blood leukocytes

SPARCL1 Antibody (Center) - Protocols

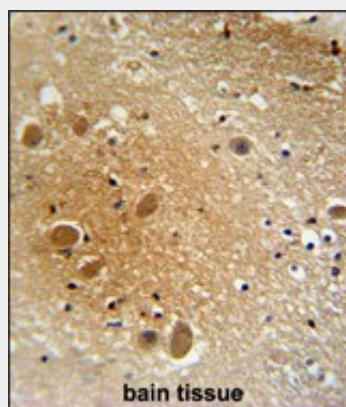
Provided below are standard protocols that you may find useful for product applications.

- [Western Blot](#)
- [Blocking Peptides](#)
- [Dot Blot](#)
- [Immunohistochemistry](#)
- [Immunofluorescence](#)
- [Immunoprecipitation](#)
- [Flow Cytometry](#)
- [Cell Culture](#)

SPARCL1 Antibody (Center) - Images



SPARCL1 Antibody (Center) (Cat. #AP10208c) western blot analysis in NCI-H460 cell line lysates (35ug/lane). This demonstrates the SPARCL1 antibody detected the SPARCL1 protein (arrow).



SPARCL1 antibody (Center) (Cat. #AP10208c) immunohistochemistry analysis in formalin fixed

and paraffin embedded human brain tissue followed by peroxidase conjugation of the secondary antibody and DAB staining. This data demonstrates the use of the SPARCL1 antibody (Center) for immunohistochemistry. Clinical relevance has not been evaluated.

SPARCL1 Antibody (Center) - References

- Davila, S., et al. Genes Immun. 11(3):232-238(2010)
Wheeler, H.E., et al. PLoS Genet. 5 (10), E1000685 (2009) :
Kahler, A.K., et al. Am. J. Med. Genet. B Neuropsychiatr. Genet. 147B (7), 1089-1100 (2008) :
Weimer, J.M., et al. Glia 56(9):935-941(2008)
Scalabrini, D., et al. Neurosci. Lett. 425(3):173-176(2007)