

**CHPT1 Antibody (N-term)**  
**Affinity Purified Rabbit Polyclonal Antibody (Pab)**  
**Catalog # AP10186a**

**Specification**

---

**CHPT1 Antibody (N-term) - Product Information**

Application	WB, FC,E
Primary Accession	<a href="#">Q8WUD6</a>
Other Accession	<a href="#">Q8C025</a> , <a href="#">Q1LZE6</a> , <a href="#">Q8WUD6-2</a> , <a href="#">NP_064629.2</a>
Reactivity	Human
Predicted	Bovine, Mouse
Host	Rabbit
Clonality	Polyclonal
Isotype	Rabbit IgG
Calculated MW	45097
Antigen Region	7-33

**CHPT1 Antibody (N-term) - Additional Information**

**Gene ID** 56994

**Other Names**

Cholinephosphotransferase 1, hCPT1, AAPT1-like protein, Diacylglycerol cholinephosphotransferase 1, CHPT1, CPT1

**Target/Specificity**

This CHPT1 antibody is generated from rabbits immunized with a KLH conjugated synthetic peptide between 7-33 amino acids from the N-terminal region of human CHPT1.

**Dilution**

WB~~1:1000  
FC~~1:10~50

**Format**

Purified polyclonal antibody supplied in PBS with 0.09% (W/V) sodium azide. This antibody is purified through a protein A column, followed by peptide affinity purification.

**Storage**

Maintain refrigerated at 2-8°C for up to 2 weeks. For long term storage store at -20°C in small aliquots to prevent freeze-thaw cycles.

**Precautions**

CHPT1 Antibody (N-term) is for research use only and not for use in diagnostic or therapeutic procedures.

**CHPT1 Antibody (N-term) - Protein Information**

**Name** CHPT1 ([HGNC:17852](#))

## Synonyms CPT1

**Function** Catalyzes the final step of de novo phosphatidylcholine (PC) synthesis, i.e. the transfer of choline phosphate from CDP-choline to the free hydroxyl of a diacylglycerol (DAG), producing a PC. It thereby plays a central role in the formation and maintenance of vesicular membranes.

## Cellular Location

Golgi apparatus membrane; Multi-pass membrane protein

## Tissue Location

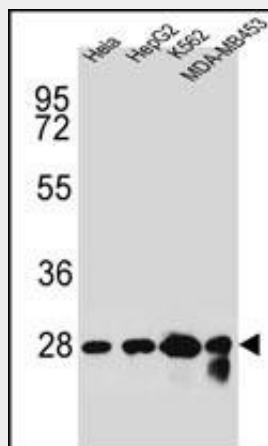
Highly expressed in testis, colon, small intestine, heart, prostate and spleen. Also detected in kidney, skeletal muscle, pancreas, leukocytes, ovary and thymus. Weakly expressed in the brain, placenta and lung. Overexpressed in cancerous breast epithelial cell lines.

## CHPT1 Antibody (N-term) - Protocols

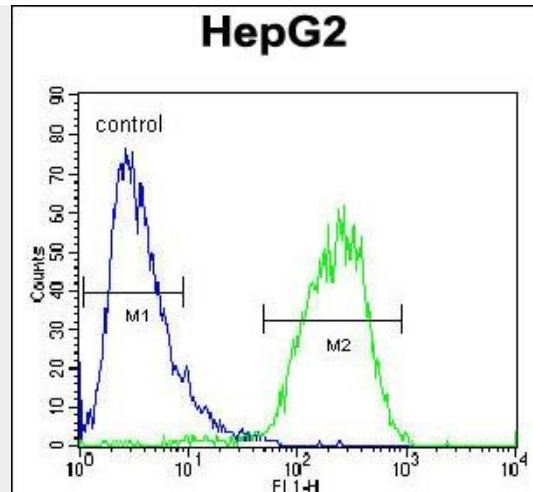
Provided below are standard protocols that you may find useful for product applications.

- [Western Blot](#)
- [Blocking Peptides](#)
- [Dot Blot](#)
- [Immunohistochemistry](#)
- [Immunofluorescence](#)
- [Immunoprecipitation](#)
- [Flow Cytometry](#)
- [Cell Culture](#)

## CHPT1 Antibody (N-term) - Images



CHPT1 Antibody (N-term) (Cat. #AP10186a) western blot analysis in HeLa, HepG2, K562, MDA-MB453 cell line lysates (35ug/lane). This demonstrates the CHPT1 antibody detected the CHPT1 protein (arrow).



CHPT1 Antibody (N-term) (Cat. #AP10186a) flow cytometric analysis of HepG2 cells (right histogram) compared to a negative control cell (left histogram). FITC-conjugated goat-anti-rabbit secondary antibodies were used for the analysis.

#### **CHPT1 Antibody (N-term) - References**

- Akech, J., et al. *Biochem. Biophys. Res. Commun.* 333(1):35-41(2005)
- Ghosh, A., et al. *Biochem. Biophys. Res. Commun.* 297(4):1043-1048(2002)
- Henneberry, A.L., et al. *J. Biol. Chem.* 275(38):29808-29815(2000)