

**CCL4 Antibody (Center)**  
**Affinity Purified Rabbit Polyclonal Antibody (Pab)**  
**Catalog # AP10172B****Specification**

---

**CCL4 Antibody (Center) - Product Information**

Application	<b>WB, IHC-P,E</b>
Primary Accession	<a href="#">P13236</a>
Other Accession	<a href="#">Q8NHW4</a> , <a href="#">NP_996890.1</a> , <a href="#">NP_002975.1</a> , <a href="#">NP_001001435.1</a>
Reactivity	<b>Human, Mouse</b>
Host	<b>Rabbit</b>
Clonality	<b>Polyclonal</b>
Isotype	<b>Rabbit IgG</b>
Calculated MW	<b>10212</b>
Antigen Region	<b>22-48</b>

**CCL4 Antibody (Center) - Additional Information****Gene ID** 388372;6351**Other Names**

C-C motif chemokine 4, G-26 T-lymphocyte-secreted protein, HC21, Lymphocyte activation gene 1 protein, LAG-1, MIP-1-beta(1-69), Macrophage inflammatory protein 1-beta, MIP-1-beta, PAT 744, Protein H400, SIS-gamma, Small-inducible cytokine A4, T-cell activation protein 2, ACT-2, MIP-1-beta(3-69), CCL4, LAG1, MIP1B, SCYA4

**Target/Specificity**

This CCL4 antibody is generated from rabbits immunized with a KLH conjugated synthetic peptide between 22-48 amino acids from the Central region of human CCL4.

**Dilution**

WB~~1:1000  
IHC-P~~1:50~100

**Format**

Purified polyclonal antibody supplied in PBS with 0.09% (W/V) sodium azide. This antibody is purified through a protein A column, followed by peptide affinity purification.

**Storage**

Maintain refrigerated at 2-8°C for up to 2 weeks. For long term storage store at -20°C in small aliquots to prevent freeze-thaw cycles.

**Precautions**

CCL4 Antibody (Center) is for research use only and not for use in diagnostic or therapeutic procedures.

**CCL4 Antibody (Center) - Protein Information**

**Name** CCL4

**Synonyms** LAG1, MIP1B, SCYA4

**Function** Monokine with inflammatory and chemokinetic properties. Binds to CCR5. One of the major HIV-suppressive factors produced by CD8+ T- cells. Recombinant MIP-1-beta induces a dose-dependent inhibition of different strains of HIV-1, HIV-2, and simian immunodeficiency virus (SIV). The processed form MIP-1-beta(3-69) retains the abilities to induce down-modulation of surface expression of the chemokine receptor CCR5 and to inhibit the CCR5-mediated entry of HIV-1 in T-cells. MIP-1- beta(3-69) is also a ligand for CCR1 and CCR2 isoform B.

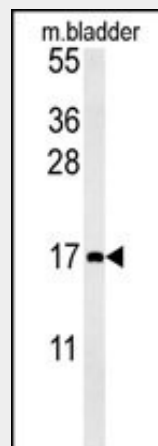
**Cellular Location**  
Secreted.

### CCL4 Antibody (Center) - Protocols

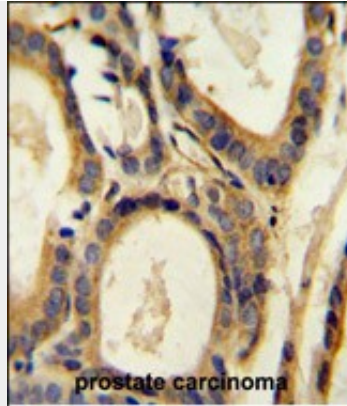
Provided below are standard protocols that you may find useful for product applications.

- [Western Blot](#)
- [Blocking Peptides](#)
- [Dot Blot](#)
- [Immunohistochemistry](#)
- [Immunofluorescence](#)
- [Immunoprecipitation](#)
- [Flow Cytometry](#)
- [Cell Culture](#)

### CCL4 Antibody (Center) - Images



CCL4 Antibody (Center) (Cat. #AP10172b) western blot analysis in mouse bladder tissue lysates (15ug/lane). This demonstrates the CCL4 antibody detected CCL4 protein (arrow).



CCL4 Antibody (Center) (Cat. #AP10172b) immunohistochemistry analysis in formalin fixed and paraffin embedded human prostate carcinoma followed by peroxidase conjugation of the secondary antibody and DAB staining. This data demonstrates the use of the CCL4 Antibody (Center) for immunohistochemistry. Clinical relevance has not been evaluated.

#### **CCL4 Antibody (Center) - Background**

This gene is one of several cytokine genes clustered on the q-arm of chromosome 17. Cytokines are a family of secreted proteins involved in immunoregulatory and inflammatory processes. This protein is similar to CCL4 which inhibits HIV entry by binding to the cellular receptor CCR5. The copy number of this gene varies among individuals; most individuals have 1-5 copies in the diploid genome, although rare individuals do not contain this gene at all. The human genome reference assembly contains two copies of this gene. This record represents the more centromeric gene. [provided by RefSeq].

#### **CCL4 Antibody (Center) - References**

Colobran, R., et al. Clin. Exp. Immunol. 162(1):41-52(2010)  
Lajoie, J., et al. J. Clin. Immunol. 30(1):90-98(2010)  
Colobran, R., et al. Genes Immun. 10(3):254-259(2009)  
Shostakovich-Koretskaya, L., et al. AIDS 23(6):679-688(2009)  
Melzer, D., et al. PLoS Genet. 4 (5), E1000072 (2008) :