

RAD26 Antibody (N-term)
Affinity Purified Rabbit Polyclonal Antibody (Pab)
Catalog # AP10167A**Specification**

RAD26 Antibody (N-term) - Product Information

| | |
|-------------------|--------------------------------|
| Application | WB, FC,E |
| Primary Accession | Q5T890 |
| Other Accession | NP_001010895.1 |
| Reactivity | Human |
| Host | Rabbit |
| Clonality | Polyclonal |
| Isotype | Rabbit IgG |
| Calculated MW | 176051 |
| Antigen Region | 5-34 |

RAD26 Antibody (N-term) - Additional Information**Gene ID** 375748**Other Names**

DNA excision repair protein ERCC-6-like 2, 364-, DNA repair and recombination protein RAD26-like, ERCC6L2, C9orf102, RAD26L

Target/Specificity

This RAD26 antibody is generated from rabbits immunized with a KLH conjugated synthetic peptide between 5-34 amino acids from the N-terminal region of human RAD26.

DilutionWB~~1:1000
FC~~1:10~50**Format**

Purified polyclonal antibody supplied in PBS with 0.09% (W/V) sodium azide. This antibody is purified through a protein A column, followed by peptide affinity purification.

Storage

Maintain refrigerated at 2-8°C for up to 2 weeks. For long term storage store at -20°C in small aliquots to prevent freeze-thaw cycles.

Precautions

RAD26 Antibody (N-term) is for research use only and not for use in diagnostic or therapeutic procedures.

RAD26 Antibody (N-term) - Protein Information**Name** ERCC6L2 ([HGNC:26922](#))

Synonyms C9orf102, RAD26L

Function May be involved in early DNA damage response.

Cellular Location

Nucleus. Cytoplasm, cytoskeleton, microtubule organizing center, centrosome. Mitochondrion. Note=Colocalizes with NEK6 in the centrosome. In response to DNA damage, translocates from the cytosol to mitochondria and nucleus in a reactive oxygen species (ROS)-dependent manner

Tissue Location

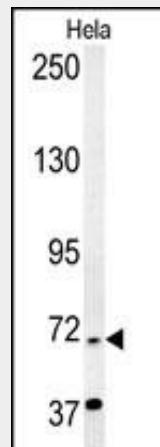
Expressed in bone marrow (at protein level).

RAD26 Antibody (N-term) - Protocols

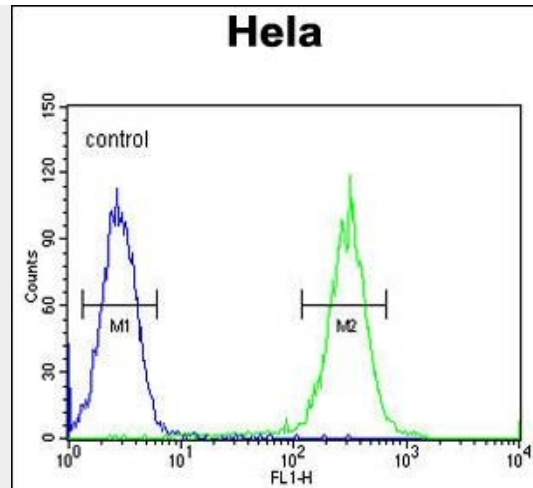
Provided below are standard protocols that you may find useful for product applications.

- [Western Blot](#)
- [Blocking Peptides](#)
- [Dot Blot](#)
- [Immunohistochemistry](#)
- [Immunofluorescence](#)
- [Immunoprecipitation](#)
- [Flow Cytometry](#)
- [Cell Culture](#)

RAD26 Antibody (N-term) - Images



RAD26 Antibody (N-term) (Cat. #AP10167a) western blot analysis in HeLa cell line lysates (35ug/lane). This demonstrates the RAD26 antibody detected the RAD26 protein (arrow).



RAD26 Antibody (N-term) (Cat. #AP10167a) flow cytometric analysis of Hela cells (right histogram) compared to a negative control cell (left histogram). FITC-conjugated goat-anti-rabbit secondary antibodies were used for the analysis.

RAD26 Antibody (N-term) - References

Lamesch, P., et al. Genomics 89(3):307-315(2007)
Venter, J.C., et al. Science 291(5507):1304-1351(2001)