

A4GALT Antibody (N-term)
Affinity Purified Rabbit Polyclonal Antibody (Pab)
Catalog # AP10116a

Specification

A4GALT Antibody (N-term) - Product Information

Application	WB,E
Primary Accession	O9NPC4
Other Accession	NP_059132.1
Reactivity	Human
Host	Rabbit
Clonality	Polyclonal
Isotype	Rabbit IgG
Calculated MW	40499
Antigen Region	26-54

A4GALT Antibody (N-term) - Additional Information

Gene ID 53947

Other Names

Lactosylceramide 4-alpha-galactosyltransferase, Alpha-1, 4-N-acetylglucosaminyltransferase, Alpha-1, 4-galactosyltransferase, Alpha4Gal-T1, CD77 synthase, Globotriaosylceramide synthase, Gb3 synthase, P1/Pk synthase, UDP-galactose:beta-D-galactosyl-beta1-R 4-alpha-D-galactosyltransferase, A4GALT, A14GALT, A4GALT1

Target/Specificity

This A4GALT antibody is generated from rabbits immunized with a KLH conjugated synthetic peptide between 26-54 amino acids from the N-terminal region of human A4GALT.

Dilution

WB~~1:1000

Format

Purified polyclonal antibody supplied in PBS with 0.09% (W/V) sodium azide. This antibody is purified through a protein A column, followed by peptide affinity purification.

Storage

Maintain refrigerated at 2-8°C for up to 2 weeks. For long term storage store at -20°C in small aliquots to prevent freeze-thaw cycles.

Precautions

A4GALT Antibody (N-term) is for research use only and not for use in diagnostic or therapeutic procedures.

A4GALT Antibody (N-term) - Protein Information

Name A4GALT

Synonyms A14GALT, A4GALT1

Function Catalyzes the transfer of galactose from UDP-alpha-D- galactose to lactosylceramide/beta-D-galactosyl-(1->4)-beta-D-glucosyl- (11)-ceramide(d18:1(4E)) to produce globotriaosylceramide/globoside Gb3Cer (d18:1(4E)) (PubMed:[10748143](#)). Also able to transfer galactose to galactosylceramide/beta-D-Gal-(11')-Cer (PubMed:[10748143](#)). Globoside Gb3Cer is a glycosphingolipid of the globo serie, one of the major types of neutral root structures of glycosphingolipids, that constitute a significant portion of mammalian cell membranes (Probable). Globotriaosylceramide/globoside Gb3Cer in blood and tissue cell membranes is the antigen Pk of blood histogroup P (PubMed:[10747952](#)).

Cellular Location

Golgi apparatus membrane; Single- pass type II membrane protein

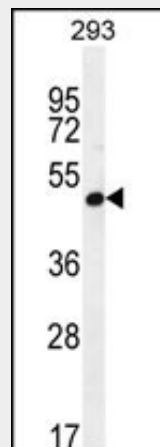
Tissue Location

Ubiquitous. Highly expressed in kidney, heart, spleen, liver, testis and placenta

A4GALT Antibody (N-term) - Protocols

Provided below are standard protocols that you may find useful for product applications.

- [Western Blot](#)
- [Blocking Peptides](#)
- [Dot Blot](#)
- [Immunohistochemistry](#)
- [Immunofluorescence](#)
- [Immunoprecipitation](#)
- [Flow Cytometry](#)
- [Cell Culture](#)

A4GALT Antibody (N-term) - Images

A4GALT Antibody (N-term) (Cat. #AP10116a) western blot analysis in 293 cell line lysates (35ug/lane). This demonstrates the A4GALT antibody detected the A4GALT protein (arrow).

A4GALT Antibody (N-term) - Background

The protein encoded by this gene catalyzes the transfer of galactose to lactosylceramide to form globotriaosylceramide, which has been identified as the P(k) antigen of the P blood group

system. The encoded protein, which is a type II membrane protein found in the Golgi, is also required for the synthesis of the bacterial verotoxins receptor.

A4GALT Antibody (N-term) - References

Zumbrun, S.D., et al. Infect. Immun. 78(11):4488-4499(2010)
Shin, I.S., et al. BMB Rep 42(5):310-314(2009)
Lund, N., et al. Blood 113(20):4980-4991(2009)
Okuda, T., et al. Glycobiology 18(12):1028-1035(2008)
Hellberg, A., et al. BMC Genet. 6, 49 (2005) :