

BCA3 Antibody (N-term)
Affinity Purified Rabbit Polyclonal Antibody (Pab)
Catalog # AP10093a

Specification

BCA3 Antibody (N-term) - Product Information

Application	WB,E
Primary Accession	O9NQ31
Other Accession	NP_065693.2
Reactivity	Human, Hamster, Mouse
Host	Rabbit
Clonality	Polyclonal
Isotype	Rabbit IgG
Calculated MW	23114
Antigen Region	54-83

BCA3 Antibody (N-term) - Additional Information

Gene ID 56672

Other Names

A-kinase-interacting protein 1, Breast cancer-associated gene 3 protein, PKA-interacting protein, Proline-rich protein BCA3, AKIP1, BCA3, C11orf17

Target/Specificity

This BCA3 antibody is generated from rabbits immunized with a KLH conjugated synthetic peptide between 54-83 amino acids from the N-terminal region of human BCA3.

Dilution

WB~~1:1000

Format

Purified polyclonal antibody supplied in PBS with 0.09% (W/V) sodium azide. This antibody is purified through a protein A column, followed by peptide affinity purification.

Storage

Maintain refrigerated at 2-8°C for up to 2 weeks. For long term storage store at -20°C in small aliquots to prevent freeze-thaw cycles.

Precautions

BCA3 Antibody (N-term) is for research use only and not for use in diagnostic or therapeutic procedures.

BCA3 Antibody (N-term) - Protein Information

Name AKIP1

Synonyms BCA3, C11orf17

Function Enhances NF-kappa-B transcriptional activity by regulating the nuclear localization of the NF-kappa-B subunit RELA and promoting the phosphorylation of RELA by PRKACA. Regulates the effect of the cAMP-dependent protein kinase signaling pathway on the NF-kappa-B activation cascade.

Cellular Location

Nucleus. Note=Locates to punctate spots

Tissue Location

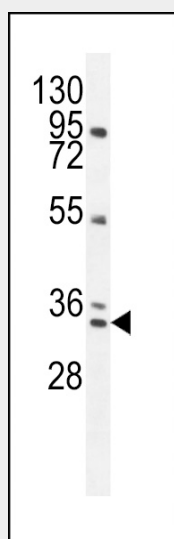
Expressed at high levels in adult heart and at lower levels in brain, testis, ovary and skeletal muscle. Up-regulated in some breast cancer cell lines. Isoform 1 and isoform 3 are expressed in fetal brain.

BCA3 Antibody (N-term) - Protocols

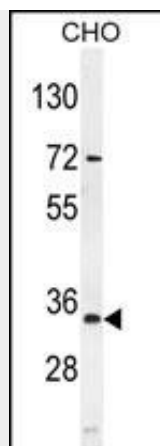
Provided below are standard protocols that you may find useful for product applications.

- [Western Blot](#)
- [Blocking Peptides](#)
- [Dot Blot](#)
- [Immunohistochemistry](#)
- [Immunofluorescence](#)
- [Immunoprecipitation](#)
- [Flow Cytometry](#)
- [Cell Culture](#)

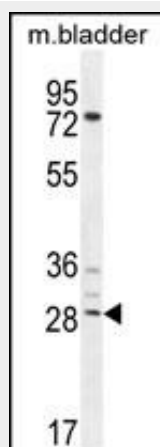
BCA3 Antibody (N-term) - Images



BCA3 Antibody (N-term) (Cat. #AP10093a) western blot analysis in NCI-H292 cell line lysates (35ug/lane). This demonstrates the BCA3 antibody detected the BCA3 protein (arrow).



BCA3 Antibody (N-term) (Cat. #AP10093a) western blot analysis in mouse CHO cell line lysates (35ug/lane). This demonstrates the BCA3 antibody detected the BCA3 protein (arrow).



BCA3 Antibody (N-term) (Cat. #AP10093a) western blot analysis in mouse bladder tissue lysates (35ug/lane). This demonstrates the BCA3 antibody detected the BCA3 protein (arrow).

BCA3 Antibody (N-term) - References

- Bailey, S.D., et al. Diabetes Care 33(10):2250-2253(2010)
- Gao, N., et al. J. Biol. Chem. 285(36):28097-28104(2010)
- Talmud, P.J., et al. Am. J. Hum. Genet. 85(5):628-642(2009)
- Gao, N., et al. J. Biol. Chem. 283(12):7834-7843(2008)
- Lamesch, P., et al. Genomics 89(3):307-315(2007)