

**POTEE Antibody (Center)**  
**Affinity Purified Rabbit Polyclonal Antibody (Pab)**  
**Catalog # AP10010C**

**Specification**

---

**POTEE Antibody (Center) - Product Information**

Application	WB, FC,E
Primary Accession	<a href="#">O6S8J3</a>
Other Accession	<a href="#">NP_001077007.1</a>
Reactivity	Human
Host	Rabbit
Clonality	Polyclonal
Isotype	Rabbit IgG
Antigen Region	380-409

**POTEE Antibody (Center) - Additional Information**

**Gene ID** 445582

**Other Names**

POTE ankyrin domain family member E, ANKRD26-like family C member 1A, Prostate, ovary, testis-expressed protein on chromosome 2, POTE-2, POTEE, A26C1A, POTE2

**Target/Specificity**

This POTEE antibody is generated from rabbits immunized with a KLH conjugated synthetic peptide between 380-409 amino acids from the Central region of human POTEE.

**Dilution**

WB~~1:1000

FC~~1:25

**Format**

Purified polyclonal antibody supplied in PBS with 0.09% (W/V) sodium azide. This antibody is purified through a protein A column, followed by peptide affinity purification.

**Storage**

Maintain refrigerated at 2-8°C for up to 2 weeks. For long term storage store at -20°C in small aliquots to prevent freeze-thaw cycles.

**Precautions**

POTEE Antibody (Center) is for research use only and not for use in diagnostic or therapeutic procedures.

**POTEE Antibody (Center) - Protein Information**

**Name** POTEE

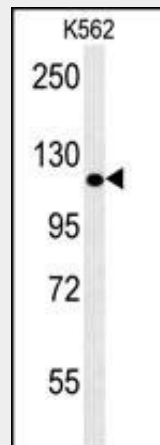
**Synonyms** A26C1A, POTE2

## POTEE Antibody (Center) - Protocols

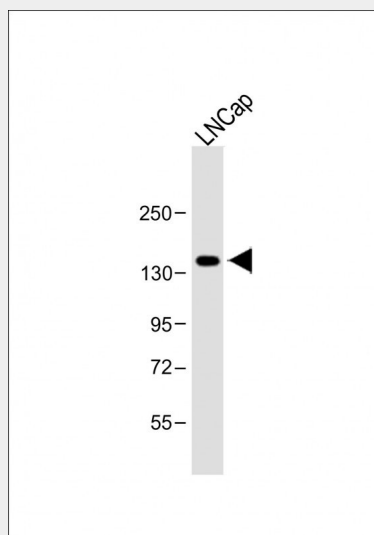
Provided below are standard protocols that you may find useful for product applications.

- [Western Blot](#)
- [Blocking Peptides](#)
- [Dot Blot](#)
- [Immunohistochemistry](#)
- [Immunofluorescence](#)
- [Immunoprecipitation](#)
- [Flow Cytometry](#)
- [Cell Culture](#)

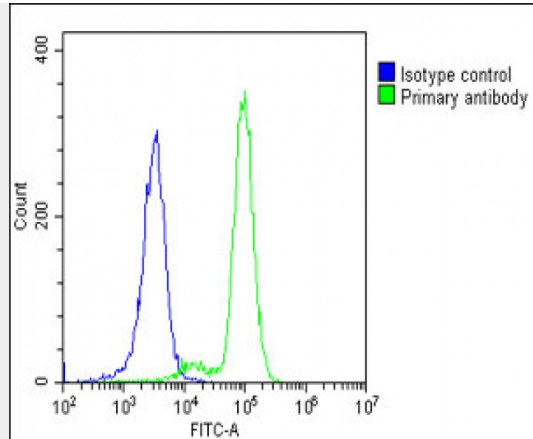
## POTEE Antibody (Center) - Images



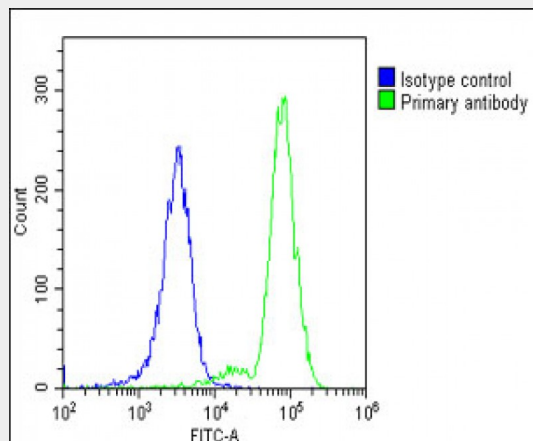
POTEE Antibody (Center) (Cat. #AP10010c) western blot analysis in K562 cell line lysates (35ug/lane). This demonstrates the POTEE antibody detected the POTEE protein (arrow).



Anti-POTEE Antibody (Center) at 1:1000 dilution + LNCap whole cell lysate Lysates/proteins at 20 µg per lane. Secondary Goat Anti-Rabbit IgG, (H+L), Peroxidase conjugated at 1/10000 dilution. Predicted band size : 121 kDa Blocking/Dilution buffer: 5% NFDM/TBST.



Overlay histogram showing K562 cells stained with AP10010c(green line). The cells were fixed with 2% paraformaldehyde (10 min) and then permeabilized with 90% methanol for 10 min. The cells were then incubated in 2% bovine serum albumin to block non-specific protein-protein interactions followed by the antibody (AP10010c, 1:25 dilution) for 60 min at 37°C. The secondary antibody used was Goat-Anti-Rabbit IgG, DyLight® 488 Conjugated Highly Cross-Adsorbed(1583138) at 1/200 dilution for 40 min at 37°C. Isotype control antibody (blue line) was rabbit IgG1 ( $1\mu\text{g}/1 \times 10^6$  cells) used under the same conditions. Acquisition of >10, 000 events was performed.



Overlay histogram showing K562 cells stained with AP10010c(green line). The cells were fixed with 2% paraformaldehyde (10 min) and then permeabilized with 90% methanol for 10 min. The cells were then incubated in 2% bovine serum albumin to block non-specific protein-protein interactions followed by the antibody (AP10010c, 1:25 dilution) for 60 min at 37°C. The secondary antibody used was Goat-Anti-Rabbit IgG, DyLight® 488 Conjugated Highly Cross-Adsorbed(1583138) at 1/200 dilution for 40 min at 37°C. Isotype control antibody (blue line) was rabbit IgG1 ( $1\mu\text{g}/1 \times 10^6$  cells) used under the same conditions. Acquisition of >10, 000 events was performed.