

RSRC1 Antibody (Center)
Affinity Purified Rabbit Polyclonal Antibody (Pab)
Catalog # AP10005c**Specification**

RSRC1 Antibody (Center) - Product Information

Application	WB, IHC-P,E
Primary Accession	O96I27
Other Accession	Q2T9Y0 , NP_057709.2
Reactivity	Human
Predicted	Bovine
Host	Rabbit
Clonality	Polyclonal
Isotype	Rabbit IgG
Antigen Region	139-169

RSRC1 Antibody (Center) - Additional Information**Gene ID** 51319**Other Names**

Serine/Arginine-related protein 53, SRrp53, Arginine/serine-rich coiled-coil protein 1, RSRC1, SRRP53

Target/Specificity

This RSRC1 antibody is generated from rabbits immunized with a KLH conjugated synthetic peptide between 139-169 amino acids from the Central region of human RSRC1.

DilutionWB~~1:1000
IHC-P~~1:50~100**Format**

Purified polyclonal antibody supplied in PBS with 0.09% (W/V) sodium azide. This antibody is purified through a protein A column, followed by peptide affinity purification.

Storage

Maintain refrigerated at 2-8°C for up to 2 weeks. For long term storage store at -20°C in small aliquots to prevent freeze-thaw cycles.

Precautions

RSRC1 Antibody (Center) is for research use only and not for use in diagnostic or therapeutic procedures.

RSRC1 Antibody (Center) - Protein Information**Name** RSRC1

Synonyms SRRP53

Function Has a role in alternative splicing and transcription regulation (PubMed:[29522154](#)). Involved in both constitutive and alternative pre-mRNA splicing. May have a role in the recognition of the 3' splice site during the second step of splicing.

Cellular Location

Nucleus. Nucleus speckle. Cytoplasm. Note=Shuttles between the nucleus and cytoplasm.

Tissue Location

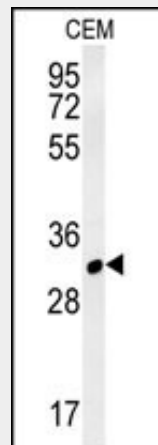
Widely expressed. Expressed in brain, spinal cord, cerebellum.

RSRC1 Antibody (Center) - Protocols

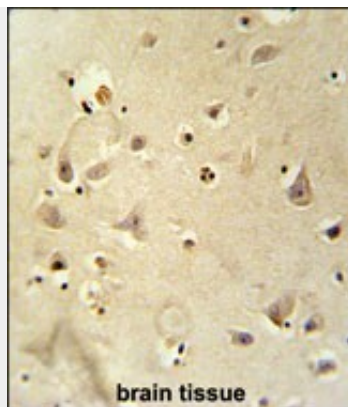
Provided below are standard protocols that you may find useful for product applications.

- [Western Blot](#)
- [Blocking Peptides](#)
- [Dot Blot](#)
- [Immunohistochemistry](#)
- [Immunofluorescence](#)
- [Immunoprecipitation](#)
- [Flow Cytometry](#)
- [Cell Culture](#)

RSRC1 Antibody (Center) - Images



RSRC1 Antibody (Center) (Cat. #AP10005c) western blot analysis in CEM cell line lysates (35ug/lane). This demonstrates the RSRC1 antibody detected the RSRC1 protein (arrow).



RSRC1 antibody (Center) (Cat. #AP10005c) immunohistochemistry analysis in formalin fixed and paraffin embedded human brain tissue followed by peroxidase conjugation of the secondary antibody and DAB staining. This data demonstrates the use of the RSRC1 antibody (Center) for immunohistochemistry. Clinical relevance has not been evaluated.

RSRC1 Antibody (Center) - Citations

- [Lancefield extract of group A streptococci type 15 acts like an anti-human IgG with restricted specificity.](#)