

CD1C
Purified Mouse Monoclonal Antibody
Catalog # AO2733a

Specification

CD1C - Product Information

Application	E, WB, IHC
Primary Accession	P29017
Reactivity	Human
Host	Mouse
Clonality	Monoclonal
Isotype	Mouse IgG2b
Calculated MW	37.7kDa KDa

Immunogen

Purified recombinant fragment of human CD1C (AA: extra 18-302) expressed in E. Coli.

Formulation

Purified antibody in PBS with 0.05% sodium azide

CD1C - Additional Information

Gene ID 911

Other Names

R7; CD1; CD1A; BDCA1

Dilution

E~~ 1/10000
WB~~ 1/500 - 1/2000
IHC~~1/200 - 1/1000

Storage

Maintain refrigerated at 2-8°C for up to 6 months. For long term storage store at -20°C in small aliquots to prevent freeze-thaw cycles.

Precautions

CD1C is for research use only and not for use in diagnostic or therapeutic procedures.

CD1C - Protein Information

Name CD1C

Function

Antigen-presenting protein that binds self and non-self lipid and glycolipid antigens and presents them to T-cell receptors on natural killer T-cells.

Cellular Location

Cell membrane; Single-pass type I membrane protein. Endosome membrane; Single-pass type I membrane protein Lysosome. Note=Subject to intracellular trafficking between the cell membrane and endosomes

Tissue Location

Expressed on cortical thymocytes, on certain T-cell leukemias, and in various other tissues

CD1C - Protocols

Provided below are standard protocols that you may find useful for product applications.

- [Western Blot](#)
- [Blocking Peptides](#)
- [Dot Blot](#)
- [Immunohistochemistry](#)
- [Immunofluorescence](#)
- [Immunoprecipitation](#)
- [Flow Cytometry](#)
- [Cell Culture](#)

CD1C - Images

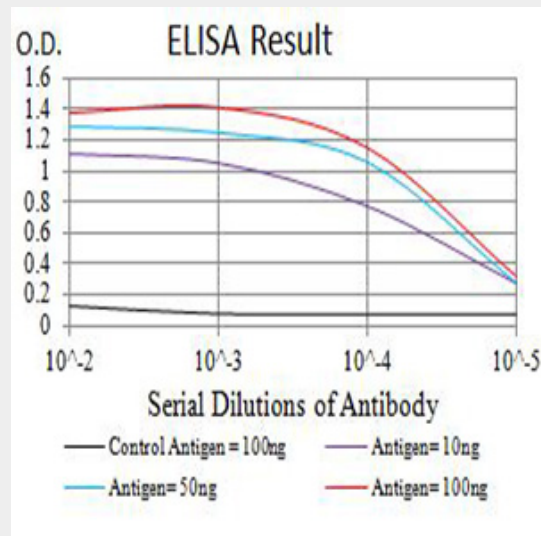


Figure 1:Black line: Control Antigen (100 ng);Purple line: Antigen (10ng); Blue line: Antigen (50 ng); Red line:Antigen (100 ng)

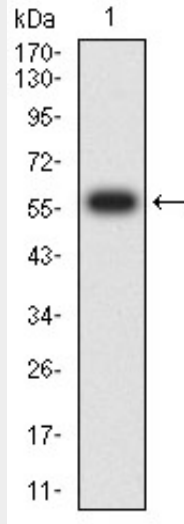


Figure 2:Western blot analysis using CD1C mAb against human CD1C (AA: extra 18-302) recombinant protein. (Expected MW is 58.1 kDa)

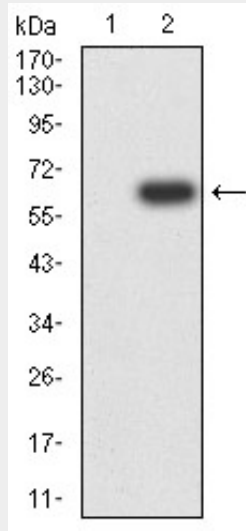


Figure 3:Western blot analysis using CD1C mAb against HEK293 (1) and CD1C (AA: extra 18-302)-hlgGFc transfected HEK293 (2) cell lysate.

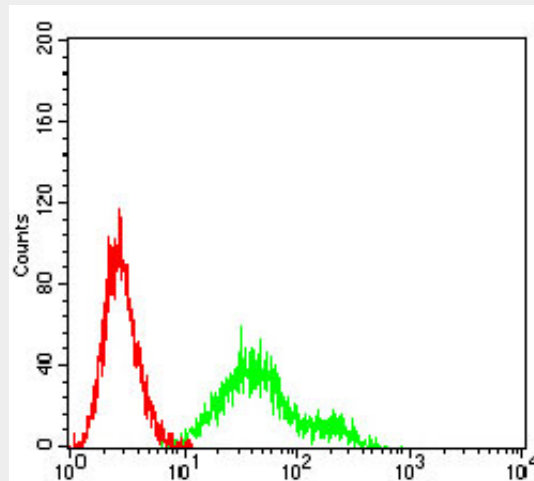


Figure 4:Flow cytometric analysis of Ramos cells using CD1C mouse mAb (green) and negative

control (red).

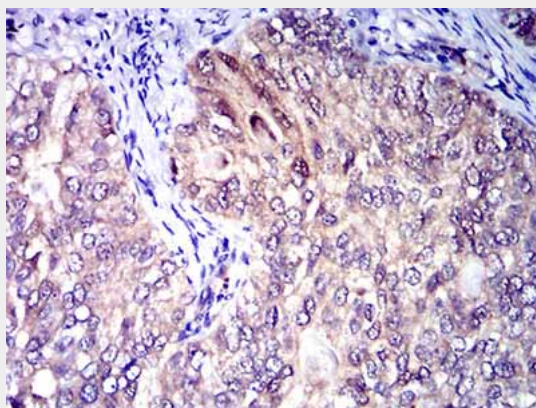


Figure 5: Immunohistochemical analysis of paraffin-embedded cervical cancer tissues using CD1C mouse mAb with DAB staining.

CD1C - References

1. Proc Natl Acad Sci U S A. 2016 Mar 1;113(9):E1266-75. 2. J Exp Med. 2014 Jun 30;211(7):1363-77.