

**CD1C**  
**Purified Mouse Monoclonal Antibody**  
**Catalog # AO2732a**

**Specification**

---

**CD1C - Product Information**

Application	<b>E, WB, IHC</b>
Primary Accession	<a href="#">P29017</a>
Reactivity	<b>Human</b>
Host	<b>Mouse</b>
Clonality	<b>Monoclonal</b>
Isotype	<b>Mouse IgG2b</b>
Calculated MW	<b>37.7kDa KDa</b>

**Immunogen**

Purified recombinant fragment of human CD1C (AA: extra 18-302) expressed in E. Coli.

**Formulation**

Purified antibody in PBS with 0.05% sodium azide

**CD1C - Additional Information**

**Gene ID** 911

**Other Names**

R7; CD1; CD1A; BDCA1

**Dilution**

E~~ 1/10000  
WB~~ 1/500 - 1/2000  
IHC~~1/200 - 1/1000

**Storage**

Maintain refrigerated at 2-8°C for up to 6 months. For long term storage store at -20°C in small aliquots to prevent freeze-thaw cycles.

**Precautions**

CD1C is for research use only and not for use in diagnostic or therapeutic procedures.

**CD1C - Protein Information**

**Name** CD1C

**Function**

Antigen-presenting protein that binds self and non-self lipid and glycolipid antigens and presents them to T-cell receptors on natural killer T-cells.

**Cellular Location**

Cell membrane; Single-pass type I membrane protein. Endosome membrane; Single-pass type I membrane protein Lysosome. Note=Subject to intracellular trafficking between the cell membrane and endosomes

**Tissue Location**

Expressed on cortical thymocytes, on certain T-cell leukemias, and in various other tissues

**CD1C - Protocols**

Provided below are standard protocols that you may find useful for product applications.

- [Western Blot](#)
- [Blocking Peptides](#)
- [Dot Blot](#)
- [Immunohistochemistry](#)
- [Immunofluorescence](#)
- [Immunoprecipitation](#)
- [Flow Cytometry](#)
- [Cell Culture](#)

**CD1C - Images**

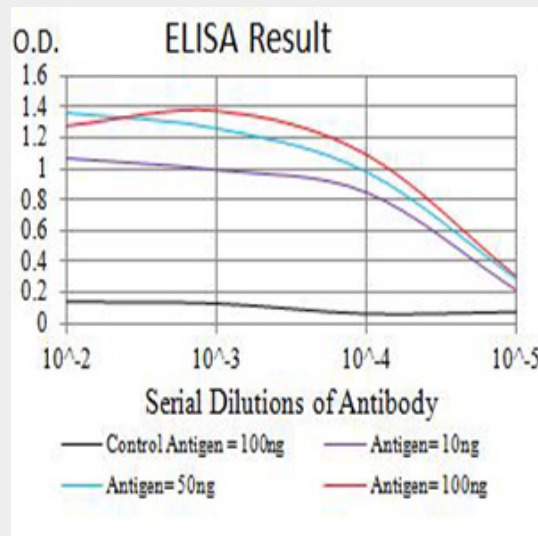


Figure 1:Black line: Control Antigen (100 ng);Purple line: Antigen (10ng); Blue line: Antigen (50 ng); Red line:Antigen (100 ng)

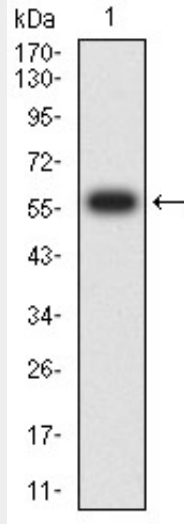


Figure 2:Western blot analysis using CD1C mAb against human CD1C (AA: extra 18-302) recombinant protein. (Expected MW is 58.1 kDa)

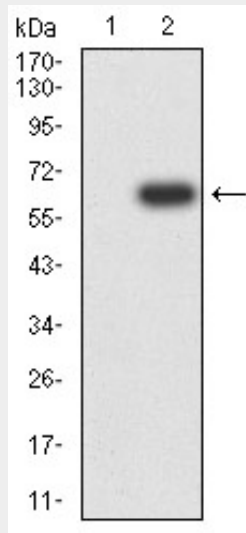


Figure 3:Western blot analysis using CD1C mAb against HEK293 (1) and CD1C (AA: extra 18-302)-hlgGFc transfected HEK293 (2) cell lysate.

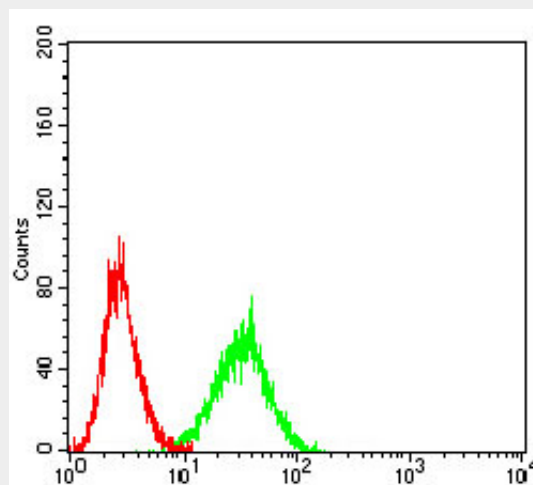


Figure 4:Flow cytometric analysis of Ramos cells using CD1C mouse mAb (green) and negative

control (red).

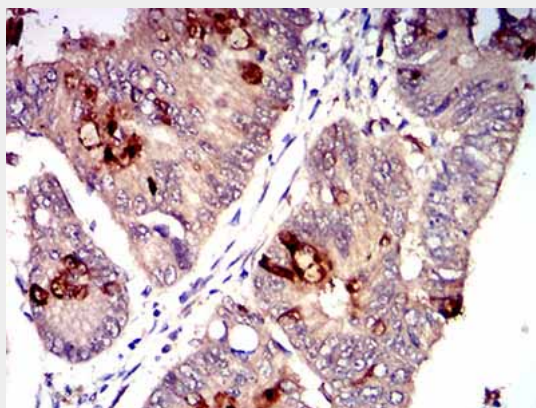


Figure 5: Immunohistochemical analysis of paraffin-embedded rectum cancer tissues using CD1C mouse mAb with DAB staining.

#### **CD1C - References**

1. Proc Natl Acad Sci U S A. 2016 Mar 1;113(9):E1266-75. 2. J Exp Med. 2014 Jun 30;211(7):1363-77.