

**BTN2A2**  
**Purified Mouse Monoclonal Antibody**  
**Catalog # AO2731a**

**Specification**

---

**BTN2A2 - Product Information**

Application	E, WB, ICC
Primary Accession	<a href="#">O8WVV5</a>
Reactivity	Human
Host	Mouse
Clonality	Monoclonal
Isotype	Mouse IgG2a
Calculated MW	59kDa kDa

**Immunogen**

Purified recombinant fragment of human BTN2A2 (AA: extra 57-237) expressed in E. Coli.

**Formulation**

Purified antibody in PBS with 0.05% sodium azide

**BTN2A2 - Additional Information**

**Gene ID** 10385

**Other Names**

BTF2; BT2.2; BTN2.2

**Dilution**

E~~ 1/10000  
WB~~ 1/500 - 1/2000  
ICC~~ 1/200 - 1/1000

**Storage**

Maintain refrigerated at 2-8°C for up to 6 months. For long term storage store at -20°C in small aliquots to prevent freeze-thaw cycles.

**Precautions**

BTN2A2 is for research use only and not for use in diagnostic or therapeutic procedures.

**BTN2A2 - Protein Information**

**Name** BTN2A2

**Synonyms** BT2.2, BTF2

**Function**

Inhibits the proliferation of CD4 and CD8 T-cells activated by anti-CD3 antibodies, T-cell metabolism and IL2 and IFNG secretion.

### Cellular Location

Membrane; Single-pass type I membrane protein

### Tissue Location

Highly expressed in brain, bone marrow, small intestine, muscle, spleen and pancreas. Moderate expression was seen in lung, liver and kidney.

### BTN2A2 - Protocols

Provided below are standard protocols that you may find useful for product applications.

- [Western Blot](#)
- [Blocking Peptides](#)
- [Dot Blot](#)
- [Immunohistochemistry](#)
- [Immunofluorescence](#)
- [Immunoprecipitation](#)
- [Flow Cytometry](#)
- [Cell Culture](#)

### BTN2A2 - Images

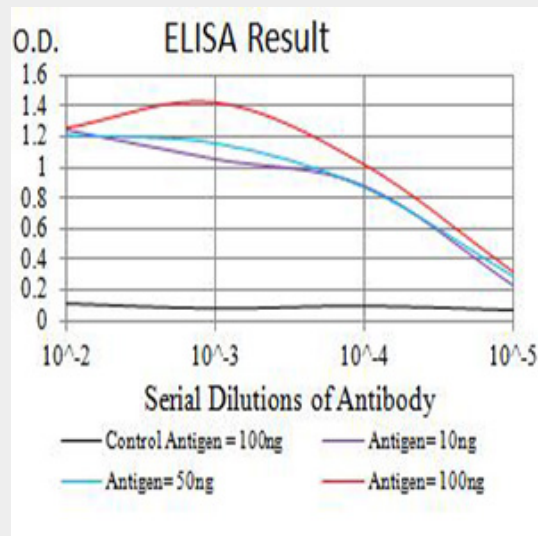


Figure 1: Black line: Control Antigen (100 ng); Purple line: Antigen (10ng); Blue line: Antigen (50 ng); Red line: Antigen (100 ng)

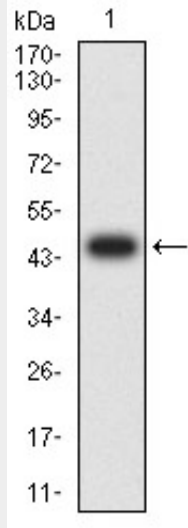


Figure 2: Western blot analysis using BTN2A2 mAb against human BTN2A2 (AA: extra 57-237) recombinant protein. (Expected MW is 46.4 kDa)

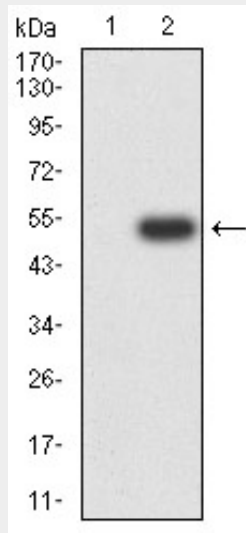


Figure 3: Western blot analysis using BTN2A2 mAb against HEK293 (1) and BTN2A2 (AA: extra 57-237)-hlgGfc transfected HEK293 (2) cell lysate.

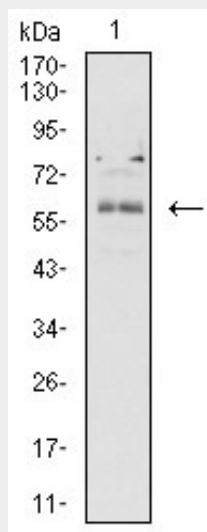


Figure 4:Western blot analysis using BTN2A2 mouse mAb against K562 (1) cell lysate.

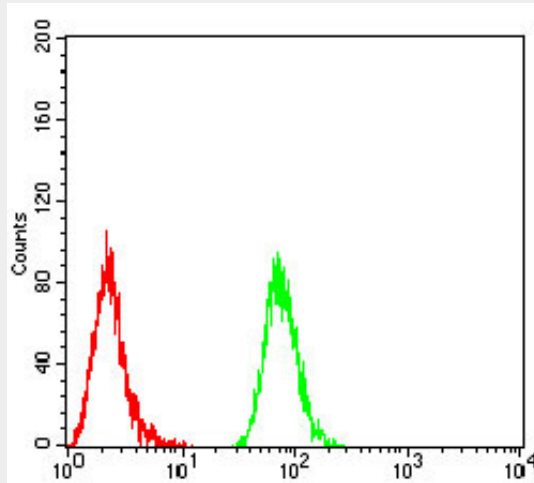


Figure 5:Flow cytometric analysis of Hela cells using BTN2A2 mouse mAb (green) and negative control (red).

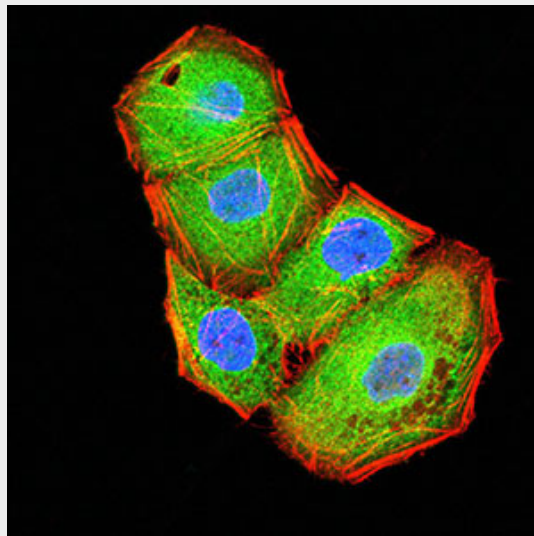


Figure 6:Immunofluorescence analysis of Hela cells using BTN2A2 mouse mAb (green). Blue: DRAQ5 fluorescent DNA dye. Red: Actin filaments have been labeled with Alexa Fluor- 555 phalloidin. Secondary antibody from Fisher (Cat#: 35503)

#### **BTN2A2 - References**

1.J Exp Med. 2016 Feb 8;213(2):177-87.2.Proteomics. 2002 Jul;2(7):850-6.