

CD191
Purified Mouse Monoclonal Antibody
Catalog # AO2724a

Specification

CD191 - Product Information

Application	E, WB
Primary Accession	P32246
Reactivity	Human
Host	Mouse
Clonality	Monoclonal
Isotype	Mouse IgG1
Calculated MW	41.2kDa KDa

Immunogen

Purified recombinant fragment of human CD191 (AA: extra mix) expressed in E. Coli.

Formulation

Purified antibody in PBS with 0.05% sodium azide

CD191 - Additional Information

Gene ID 1230

Other Names

CCR1; CKR1; CKR-1; HM145; CMKBR1; MIP1aR; SCYAR1

Dilution

E~~ 1/10000

WB~~ 1/500 - 1/2000

Storage

Maintain refrigerated at 2-8°C for up to 6 months. For long term storage store at -20°C in small aliquots to prevent freeze-thaw cycles.

Precautions

CD191 is for research use only and not for use in diagnostic or therapeutic procedures.

CD191 - Protein Information

Name CCR1

Synonyms CMKBR1, CMKR1, SCYAR1

Function

Chemokine receptor that plays a crucial role in regulating immune cell migration, inflammation, and immune responses (PubMed: <http://www.uniprot.org/citations/14991608> target="_blank">14991608). Contributes to the inflammatory response by recruiting immune

cells, such as monocytes, macrophages, T-cells, and dendritic cells, to sites of inflammation for the clearance of pathogens and the resolution of tissue damage. When activated by its ligands including CCL3, CCL5-9, CCL13-16 and CCL23, triggers a signaling cascade within immune cells, leading to their migration towards the source of the chemokine (PubMed:15905581). For example, mediates neutrophil migration after activation by CCL3 leading to the sequential release of TNF-alpha and leukotriene B4 (By similarity). Mediates also monocyte migration upon CXCL4 binding (PubMed:29930254). Activation by CCL5 results in neuroinflammation through the ERK1/2 signaling pathway (By similarity).

Cellular Location

Cell membrane; Multi-pass membrane protein

Tissue Location

Widely expressed in different hematopoietic cells.

CD191 - Protocols

Provided below are standard protocols that you may find useful for product applications.

- [Western Blot](#)
- [Blocking Peptides](#)
- [Dot Blot](#)
- [Immunohistochemistry](#)
- [Immunofluorescence](#)
- [Immunoprecipitation](#)
- [Flow Cytometry](#)
- [Cell Culture](#)

CD191 - Images

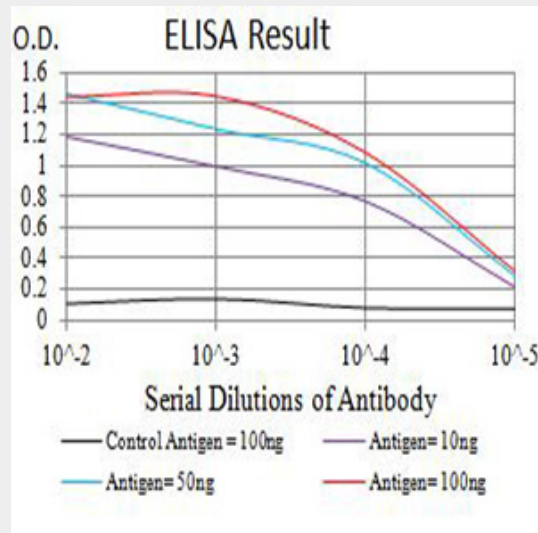


Figure 1: Black line: Control Antigen (100 ng); Purple line: Antigen (10ng); Blue line: Antigen (50 ng); Red line: Antigen (100 ng)

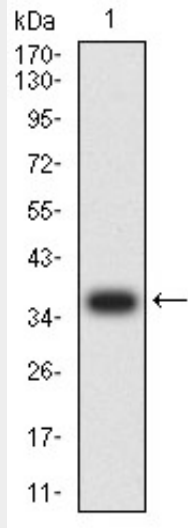


Figure 2:Western blot analysis using CD191 mAb against human CD191 (AA: extra mix) recombinant protein. (Expected MW is 37 kDa)

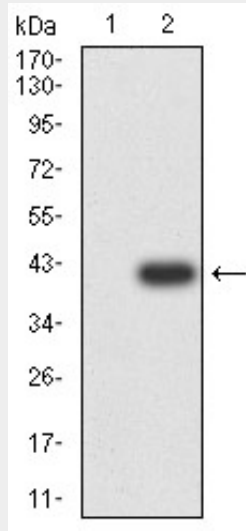


Figure 3:Western blot analysis using CD191 mAb against HEK293 (1) and CD191 (AA: extra mix)-hlgGfc transfected HEK293 (2) cell lysate.

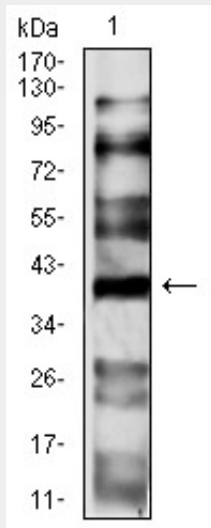


Figure 4:Western blot analysis using CD191 mouse mAb against HepG2 (1) cell lysate.

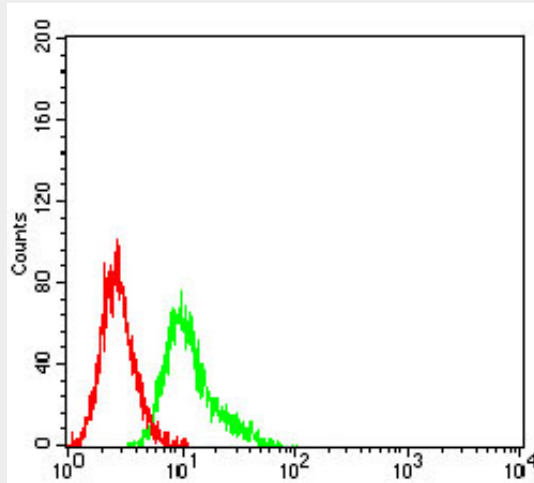


Figure 5:Flow cytometric analysis of Ramos cells using CD191 mouse mAb (green) and negative control (red).

CD191 - References

- 1.Histol Histopathol. 2014 Sep;29(9):1153-60.2.Am J Clin Pathol. 2010 Mar;133(3):473-83.