

**CD209**  
**Purified Mouse Monoclonal Antibody**  
**Catalog # AO2685a****Specification**

---

**CD209 - Product Information**

Application	<b>E, WB</b>
Primary Accession	<a href="#">O9NNX6</a>
Reactivity	<b>Human</b>
Host	<b>Mouse</b>
Clonality	<b>Monoclonal</b>
Isotype	<b>Mouse IgG1</b>
Calculated MW	<b>45.8kDa KDa</b>

**Immunogen**

Purified recombinant fragment of human CD209 (AA: extra 270-404) expressed in E. Coli.

**Formulation**

Purified antibody in PBS with 0.05% sodium azide

**CD209 - Additional Information**

**Gene ID** 30835

**Other Names**

CDSIGN; CLEC4L; DC-SIGN; DC-SIGN1

**Dilution**

E~~ 1/10000

WB~~ 1/500 - 1/2000

**Storage**

Maintain refrigerated at 2-8°C for up to 6 months. For long term storage store at -20°C in small aliquots to prevent freeze-thaw cycles.

**Precautions**

CD209 is for research use only and not for use in diagnostic or therapeutic procedures.

**CD209 - Protein Information**

**Name** CD209

**Synonyms** CLEC4L

**Function**

Pathogen-recognition receptor expressed on the surface of immature dendritic cells (DCs) and involved in initiation of primary immune response. Thought to mediate the endocytosis of pathogens which are subsequently degraded in lysosomal compartments. The receptor returns to

the cell membrane surface and the pathogen-derived antigens are presented to resting T-cells via MHC class II proteins to initiate the adaptive immune response.

### Cellular Location

[Isoform 1]: Cell membrane; Single- pass type II membrane protein [Isoform 3]: Cell membrane; Single- pass type II membrane protein [Isoform 5]: Cell membrane; Single- pass type II membrane protein [Isoform 7]: Secreted. [Isoform 9]: Secreted. [Isoform 11]: Secreted.

### Tissue Location

Predominantly expressed in dendritic cells and in DC-residing tissues. Also found in placental macrophages, endothelial cells of placental vascular channels, peripheral blood mononuclear cells, and THP-1 monocytes.

## CD209 - Protocols

Provided below are standard protocols that you may find useful for product applications.

- [Western Blot](#)
- [Blocking Peptides](#)
- [Dot Blot](#)
- [Immunohistochemistry](#)
- [Immunofluorescence](#)
- [Immunoprecipitation](#)
- [Flow Cytometry](#)
- [Cell Culture](#)

## CD209 - Images

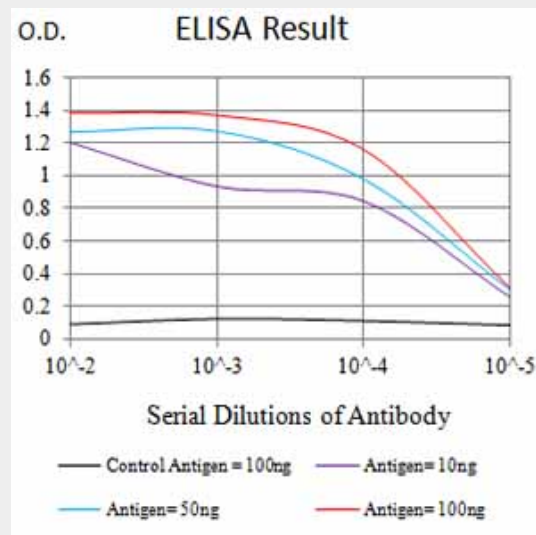


Figure 1: Black line: Control Antigen (100 ng); Purple line: Antigen (10ng); Blue line: Antigen (50 ng); Red line: Antigen (100 ng)

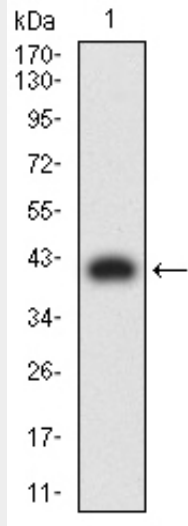


Figure 2:Western blot analysis using CD209 mAb against human CD209 (AA: extra 270-404) recombinant protein. (Expected MW is 41.1 kDa)

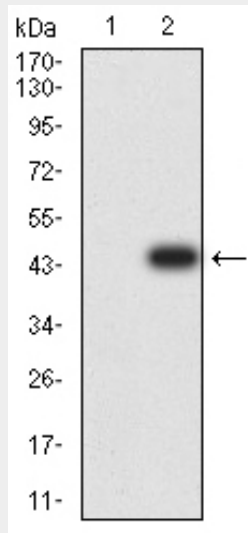


Figure 3:Western blot analysis using CD209 mAb against HEK293 (1) and CD209 (AA: extra 270-404)-hlgGfC transfected HEK293 (2) cell lysate.

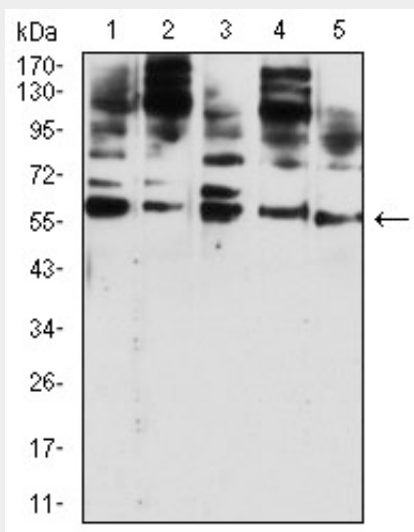


Figure 4:Western blot analysis using CD209 mouse mAb against Hela (1), U937 (2), THP-1 (3), HL-60 (4), and A431 (5) cell lysate.

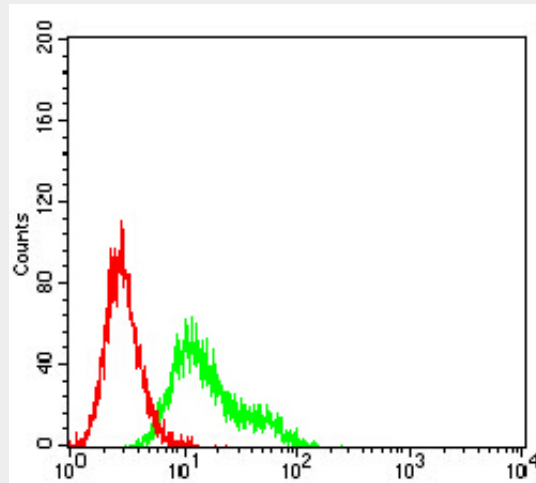


Figure 5:Flow cytometric analysis of Ramos cells using CD209 mouse mAb (green) and negative control (red).

#### CD209 - References

- 1.Blood. 2015 Oct 15;126(16):1911-20.
- 2.PLoS One. 2014 Aug 22;9(8):e105236.