

CD10
Purified Mouse Monoclonal Antibody
Catalog # AO2670a**Specification**

CD10 - Product Information

Application	E, WB
Primary Accession	P08473
Reactivity	Human
Host	Mouse
Clonality	Monoclonal
Isotype	Mouse IgG1
Calculated MW	85.5kDa KDa

Immunogen

Purified recombinant fragment of human CD10 (AA: extra 549-750) expressed in E. Coli.

Formulation

Purified antibody in PBS with 0.05% sodium azide

CD10 - Additional Information

Gene ID 4311

Other Names

NEP; SFE; MME; CALLA; CMT2T; SCA43

Dilution

E~~ 1/10000

WB~~ 1/500 - 1/2000

Storage

Maintain refrigerated at 2-8°C for up to 6 months. For long term storage store at -20°C in small aliquots to prevent freeze-thaw cycles.

Precautions

CD10 is for research use only and not for use in diagnostic or therapeutic procedures.

CD10 - Protein Information

Name MME {ECO:0000303|PubMed:27588448, ECO:0000312|HGNC:HGNC:7154}

Function

Thermolysin-like specificity, but is almost confined on acting on polypeptides of up to 30 amino acids (PubMed:15283675, PubMed:6208535, PubMed:6349683, PubMed:8168535)

target="_blank">8168535). Biologically important in the destruction of opioid peptides such as Met- and Leu-enkephalins by cleavage of a Gly-Phe bond (PubMed:17101991, PubMed:6349683). Catalyzes cleavage of bradykinin, substance P and neurotensin peptides (PubMed:6208535). Able to cleave angiotensin-1, angiotensin-2 and angiotensin 1-9 (PubMed:15283675, PubMed:6349683). Involved in the degradation of atrial natriuretic factor (ANF) and brain natriuretic factor (BNP(1-32)) (PubMed:16254193, PubMed:2531377, PubMed:2972276). Displays UV-inducible elastase activity toward skin preelastic and elastic fibers (PubMed:20876573).

Cellular Location

Cell membrane; Single-pass type II membrane protein

CD10 - Protocols

Provided below are standard protocols that you may find useful for product applications.

- [Western Blot](#)
- [Blocking Peptides](#)
- [Dot Blot](#)
- [Immunohistochemistry](#)
- [Immunofluorescence](#)
- [Immunoprecipitation](#)
- [Flow Cytometry](#)
- [Cell Culture](#)

CD10 - Images

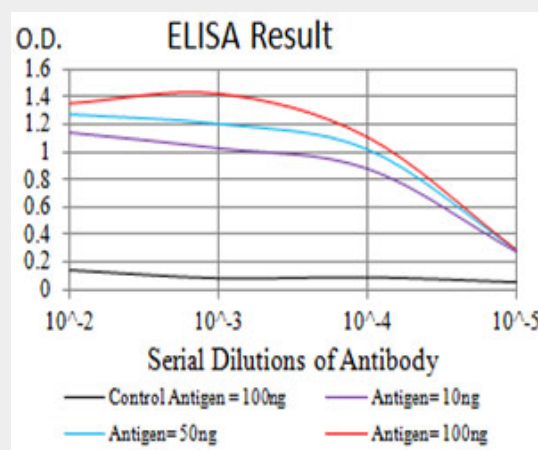


Figure 1: Black line: Control Antigen (100 ng); Purple line: Antigen (10ng); Blue line: Antigen (50 ng); Red line: Antigen (100 ng)

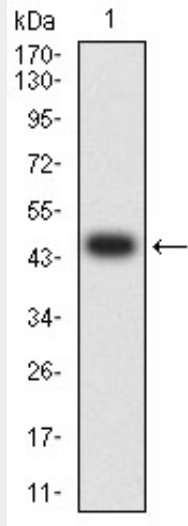


Figure 2:Western blot analysis using CD10 mAb against human CD10 (AA: extra 549-750) recombinant protein. (Expected MW is 48.8 kDa)

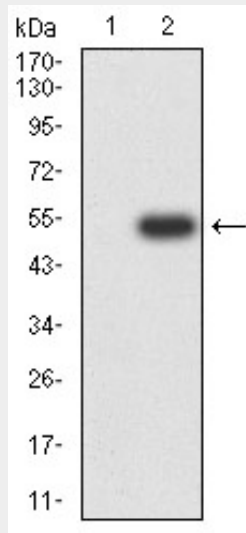


Figure 3:Western blot analysis using CD10 mAb against HEK293 (1) and CD10 (AA: extra 549-750)-hlgGfc transfected HEK293 (2) cell lysate.

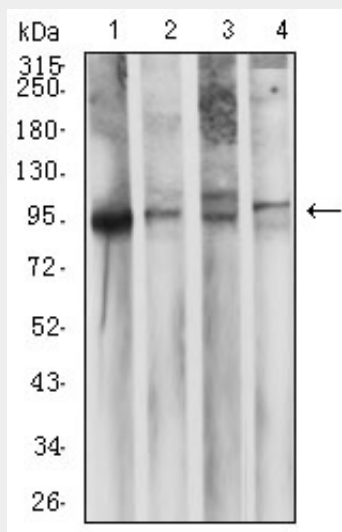


Figure 4:Western blot analysis using CD10 mouse mAb against LNCap (1), Ramos (2), Raji (3), and NTERA-2 (4) cell lysate.

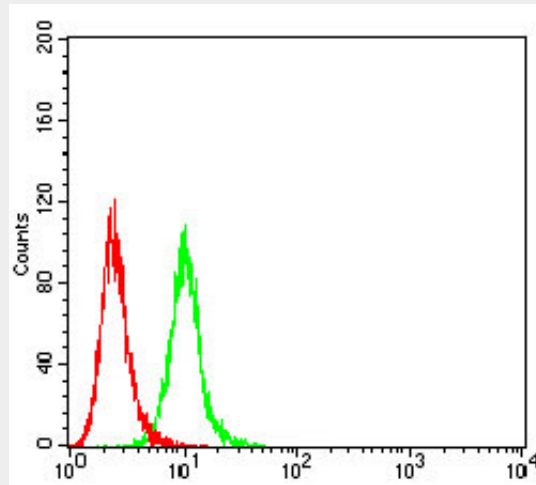


Figure 5:Flow cytometric analysis of K562 cells using CD10 mouse mAb (green) and negative control (red).

CD10 - References

- 1.Pathobiology. 2015;82(6):259-63.
- 2.Asian Pac J Cancer Prev. 2015;16(8):3147-52.