

P2RY14
Purified Mouse Monoclonal Antibody
Catalog # AO2663a**Specification**

P2RY14 - Product Information

Application	E, WB, IHC
Primary Accession	O15391
Reactivity	Human
Host	Mouse
Clonality	Monoclonal
Isotype	Mouse IgG2b
Calculated MW	39kDa KDa

Immunogen

Purified recombinant fragment of human P2RY14 (AA: extra mix) expressed in E. Coli.

Formulation

Purified antibody in PBS with 0.05% sodium azide

P2RY14 - Additional Information

Gene ID 9934

Other Names

P2Y14; BPR105; GPR105

Dilution

E~~ 1/10000

WB~~ 1/500 - 1/2000

IHC~~ 1/200 - 1/1000

Storage

Maintain refrigerated at 2-8°C for up to 6 months. For long term storage store at -20°C in small aliquots to prevent freeze-thaw cycles.

Precautions

P2RY14 is for research use only and not for use in diagnostic or therapeutic procedures.

P2RY14 - Protein Information

Name P2RY14

Synonyms GPR105, KIAA0001

Function

Receptor for UDP-glucose and other UDP-sugar coupled to G- proteins. Not activated by ATP, ADP, UTP or ATP.

Cellular Location

Cell membrane; Multi-pass membrane protein.

Tissue Location

Highest expression in the placenta, adipose tissue, stomach and intestine, intermediate levels in the brain, spleen, lung and heart, lowest levels in the kidney

P2RY14 - Protocols

Provided below are standard protocols that you may find useful for product applications.

- [Western Blot](#)
- [Blocking Peptides](#)
- [Dot Blot](#)
- [Immunohistochemistry](#)
- [Immunofluorescence](#)
- [Immunoprecipitation](#)
- [Flow Cytometry](#)
- [Cell Culture](#)

P2RY14 - Images

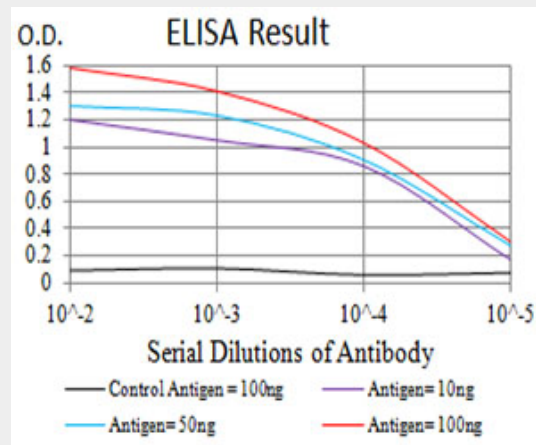


Figure 1: Black line: Control Antigen (100 ng); Purple line: Antigen (10ng); Blue line: Antigen (50 ng); Red line: Antigen (100 ng)

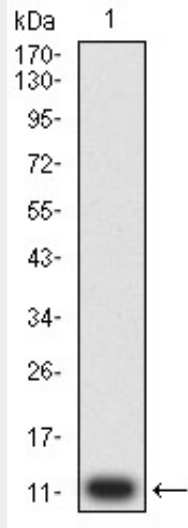


Figure 2:Western blot analysis using P2RY14 mAb against human P2RY14 (AA: extra mix) recombinant protein. (Expected MW is 11.5 kDa)

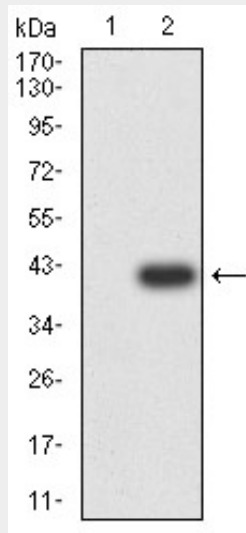


Figure 3:Western blot analysis using P2RY14 mAb against HEK293 (1) and P2RY14 (AA: extra mix)-hlgGfc transfected HEK293 (2) cell lysate.

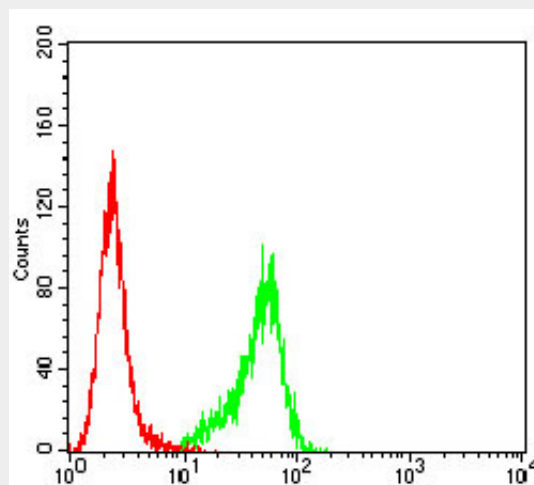


Figure 4:Flow cytometric analysis of HeLa cells using P2RY14 mouse mAb (green) and negative

control (red).

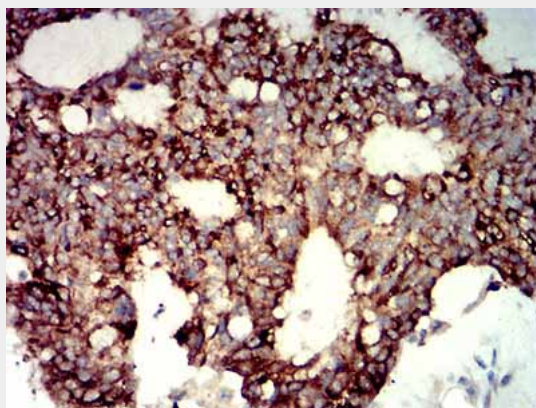
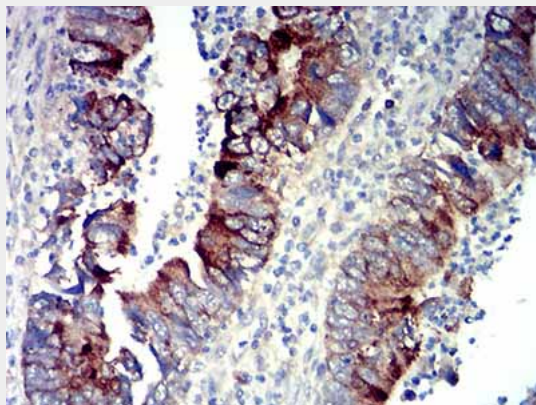


Figure 5: Immunohistochemical analysis of paraffin-embedded colon cancer tissues using P2RY14 mouse mAb with DAB staining.



1/200 - 1/1000

P2RY14 - References

1. Mol Pharmacol. 2013 Jul;84(1):41-9. 2. Bioorg Med Chem Lett. 2007 Feb 1;17(3):761-6.