

P2RY14
Purified Mouse Monoclonal Antibody
Catalog # AO2662a

Specification

P2RY14 - Product Information

Application	E, WB, ICC, IHC
Primary Accession	Q15391
Reactivity	Human
Host	Mouse
Clonality	Monoclonal
Isotype	Mouse IgG2b
Calculated MW	39kDa KDa

Immunogen

Purified recombinant fragment of human P2RY14 (AA: extra mix) expressed in E. Coli.

Formulation

Purified antibody in PBS with 0.05% sodium azide

P2RY14 - Additional Information

Gene ID 9934

Other Names

P2Y14; BPR105; GPR105

Dilution

E~~ 1/10000
WB~~ 1/500 - 1/2000
ICC~~ 1/200 - 1/1000
IHC~~ 1/200 - 1/1000

Storage

Maintain refrigerated at 2-8°C for up to 6 months. For long term storage store at -20°C in small aliquots to prevent freeze-thaw cycles.

Precautions

P2RY14 is for research use only and not for use in diagnostic or therapeutic procedures.

P2RY14 - Protein Information

Name P2RY14

Synonyms GPR105, KIAA0001

Function

Receptor for UDP-glucose and other UDP-sugar coupled to G- proteins. Not activated by ATP, ADP,

UTP or ATP.

Cellular Location

Cell membrane; Multi-pass membrane protein.

Tissue Location

Highest expression in the placenta, adipose tissue, stomach and intestine, intermediate levels in the brain, spleen, lung and heart, lowest levels in the kidney

P2RY14 - Protocols

Provided below are standard protocols that you may find useful for product applications.

- [Western Blot](#)
- [Blocking Peptides](#)
- [Dot Blot](#)
- [Immunohistochemistry](#)
- [Immunofluorescence](#)
- [Immunoprecipitation](#)
- [Flow Cytometry](#)
- [Cell Culture](#)

P2RY14 - Images

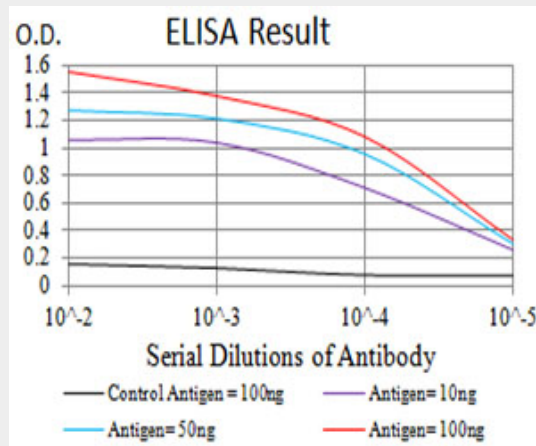


Figure 1: Black line: Control Antigen (100 ng); Purple line: Antigen (10ng); Blue line: Antigen (50 ng); Red line: Antigen (100 ng)

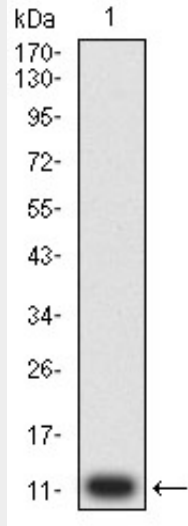


Figure 2:Western blot analysis using P2RY14 mAb against human P2RY14 (AA: extra mix) recombinant protein. (Expected MW is 11.5 kDa)

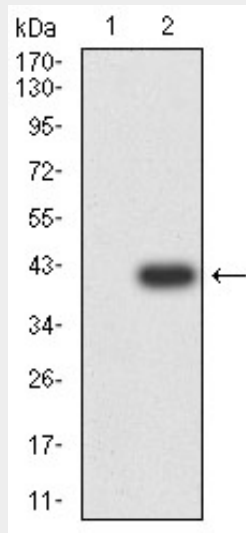


Figure 3:Western blot analysis using P2RY14 mAb against HEK293 (1) and P2RY14 (AA: extra mix)-hlgGfc transfected HEK293 (2) cell lysate.

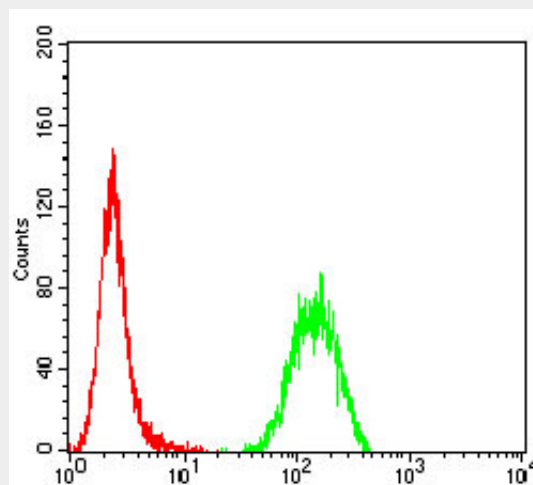


Figure 5:Flow cytometric analysis of Hela cells using P2RY14 mouse mAb (green) and negative

control (red).

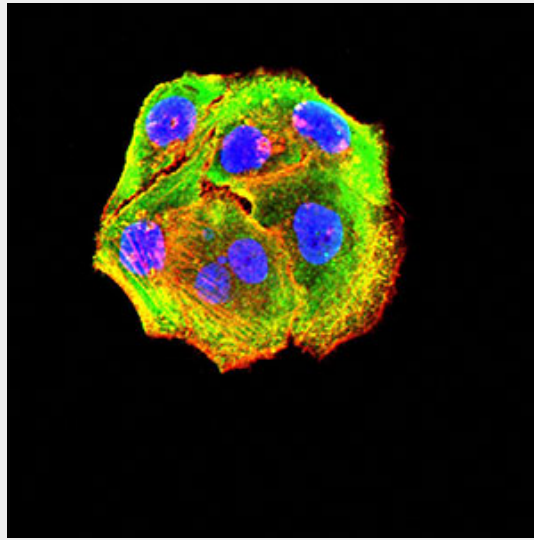


Figure 4: Immunofluorescence analysis of HeLa cells using P2RY14 mouse mAb (green). Blue: DRAQ5 fluorescent DNA dye. Red: Actin filaments have been labeled with Alexa Fluor- 555 phalloidin. Secondary antibody from Fisher (Cat#: 35503)

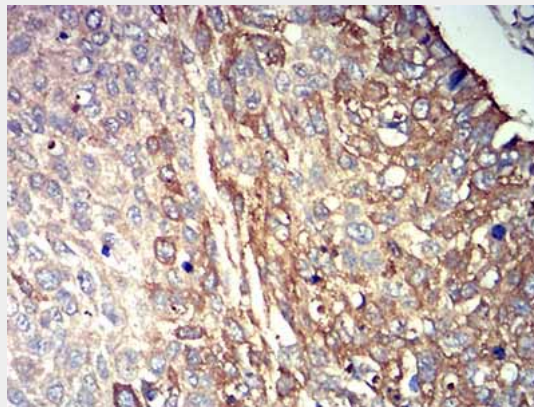


Figure 6: Immunohistochemical analysis of paraffin-embedded lung cancer tissues using P2RY14 mouse mAb with DAB staining.

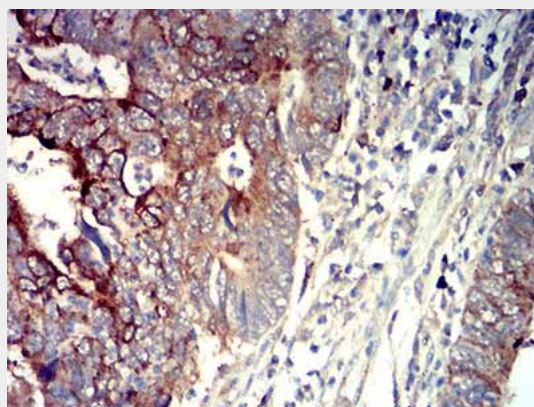


Figure 7: Immunohistochemical analysis of paraffin-embedded rectum cancer tissues using P2RY14 mouse mAb with DAB staining.

P2RY14 - References

1.Mol Pharmacol. 2013 Jul;84(1):41-9.2.Bioorg Med Chem Lett. 2007 Feb 1;17(3):761-6.