

ELANE
Purified Mouse Monoclonal Antibody
Catalog # AO2660a

Specification

ELANE - Product Information

Application	E, WB, IHC
Primary Accession	P08246
Reactivity	Human, Monkey
Host	Mouse
Clonality	Monoclonal
Isotype	Mouse IgG1
Calculated MW	28.5kDa KDa

Immunogen

Purified recombinant fragment of human ELANE (AA: 140-267) expressed in E. Coli.

Formulation

Purified antibody in PBS with 0.05% sodium azide

ELANE - Additional Information

Gene ID 1991

Other Names

GE; NE; HLE; HNE; ELA2; SCN1; PMN-E

Dilution

E~~ 1/10000
WB~~ 1/500 - 1/2000
IHC~~ 1/200 - 1/1000

Storage

Maintain refrigerated at 2-8°C for up to 6 months. For long term storage store at -20°C in small aliquots to prevent freeze-thaw cycles.

Precautions

ELANE is for research use only and not for use in diagnostic or therapeutic procedures.

ELANE - Protein Information

Name ELANE

Synonyms ELA2

Function

Serine protease that modifies the functions of natural killer cells, monocytes and granulocytes. Inhibits C5a-dependent neutrophil enzyme release and chemotaxis (PubMed:<a

<http://www.uniprot.org/citations/15140022> target="_blank">15140022). Promotes cleavage of GSDMB, thereby inhibiting pyroptosis (PubMed:36899106). Capable of killing E.coli but not S.aureus in vitro; digests outer membrane protein A (ompA) in E.coli and K.pneumoniae (PubMed:10947984).

Cellular Location

Cytoplasmic vesicle, phagosome. Note=Localized in phagolysosomes following ingestion of E.coli by neutrophils

Tissue Location

Bone marrow cells. Neutrophil (PubMed:10947984).

ELANE - Protocols

Provided below are standard protocols that you may find useful for product applications.

- [Western Blot](#)
- [Blocking Peptides](#)
- [Dot Blot](#)
- [Immunohistochemistry](#)
- [Immunofluorescence](#)
- [Immunoprecipitation](#)
- [Flow Cytometry](#)
- [Cell Culture](#)

ELANE - Images

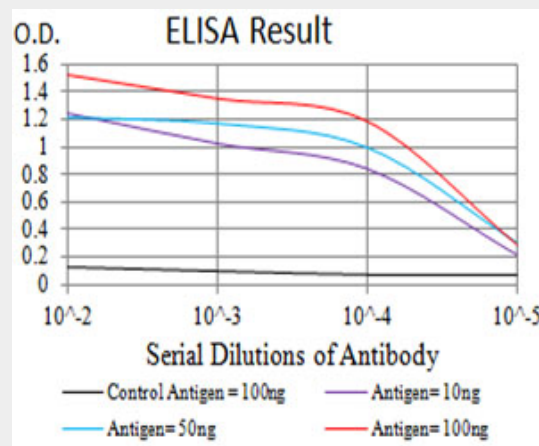


Figure 1: Black line: Control Antigen (100 ng); Purple line: Antigen (10ng); Blue line: Antigen (50 ng); Red line: Antigen (100 ng)

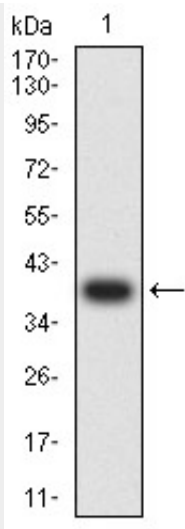


Figure 2: Western blot analysis using ELANE mAb against human ELANE (AA: 140-267) recombinant protein. (Expected MW is 39 kDa)

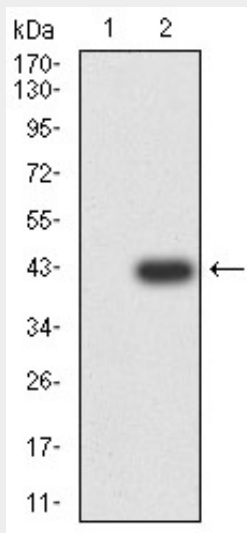


Figure 3: Western blot analysis using ELANE mAb against HEK293 (1) and ELANE (AA: 140-267)-hlgGfC transfected HEK293 (2) cell lysate.

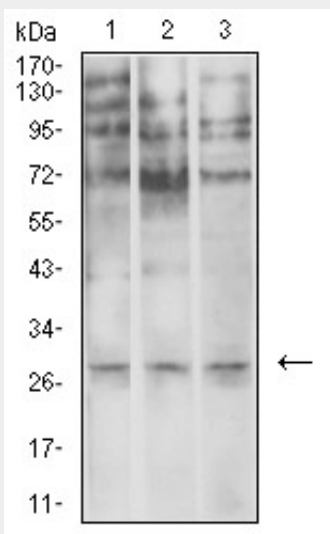


Figure 4:Western blot analysis using ELANE mouse mAb against U937 (1), SPC-A-1 (2), and COS7 (3) cell lysate.

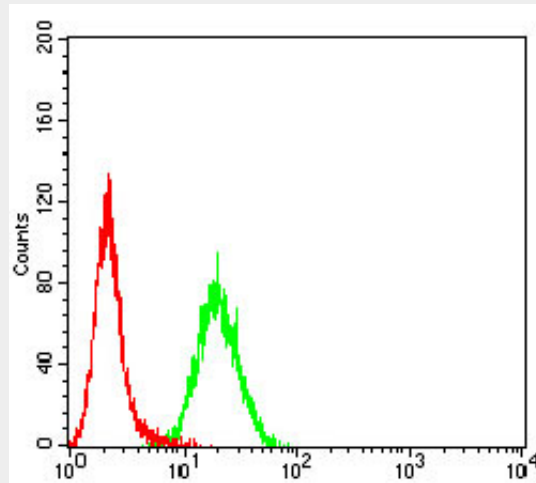


Figure 5:Flow cytometric analysis of Hela cells using ELANE mouse mAb (green) and negative control (red).

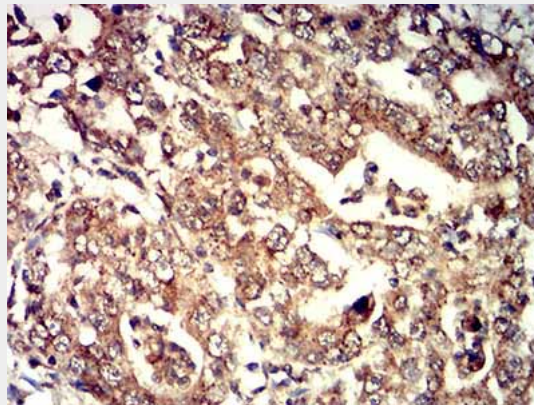


Figure 6:Immunohistochemical analysis of paraffin-embedded stomach cancer tissues using ELANE mouse mAb with DAB staining.

ELANE - References

- 1.Pediatr Blood Cancer. 2015 Dec;62(12):2229-31.
- 2.Hum Mutat. 2013 Jun;34(6):905-14.