

**CD269**  
**Purified Mouse Monoclonal Antibody**  
**Catalog # AO2651a****Specification**

---

**CD269 - Product Information**

Application	<b>E, WB</b>
Primary Accession	<a href="#">O02223</a>
Reactivity	<b>Human</b>
Host	<b>Mouse</b>
Clonality	<b>Monoclonal</b>
Isotype	<b>Mouse IgG1</b>
Calculated MW	<b>20.2kDa KDa</b>

**Immunogen**

Purified recombinant fragment of human BCMA (AA: QMAGQCSQNEYFDLc) expressed in E. Coli.

**Formulation**

Purified antibody in PBS with 0.05% sodium azide

**CD269 - Additional Information**

**Gene ID** 608

**Other Names**

BCMA; TNFRSF17; BCM; TNFRSF13A

**Dilution**

E~~ 1/10000

WB~~ 1/500 - 1/2000

**Storage**

Maintain refrigerated at 2-8°C for up to 6 months. For long term storage store at -20°C in small aliquots to prevent freeze-thaw cycles.

**Precautions**

CD269 is for research use only and not for use in diagnostic or therapeutic procedures.

**CD269 - Protein Information**

**Name** TNFRSF17

**Synonyms** BCM, BCMA

**Function**

Receptor for TNFSF13B/BlyS/BAFF and TNFSF13/APRIL. Promotes B-cell survival and plays a role in the regulation of humoral immunity. Activates NF-kappa-B and JNK.

### Cellular Location

Cell membrane; Single-pass type III membrane protein. Endomembrane system; Single-pass type III membrane protein Note=Perinuclear Golgi-like structures

### Tissue Location

Expressed in mature B-cells, but not in T-cells or monocytes

### CD269 - Protocols

Provided below are standard protocols that you may find useful for product applications.

- [Western Blot](#)
- [Blocking Peptides](#)
- [Dot Blot](#)
- [Immunohistochemistry](#)
- [Immunofluorescence](#)
- [Immunoprecipitation](#)
- [Flow Cytometry](#)
- [Cell Culture](#)

### CD269 - Images

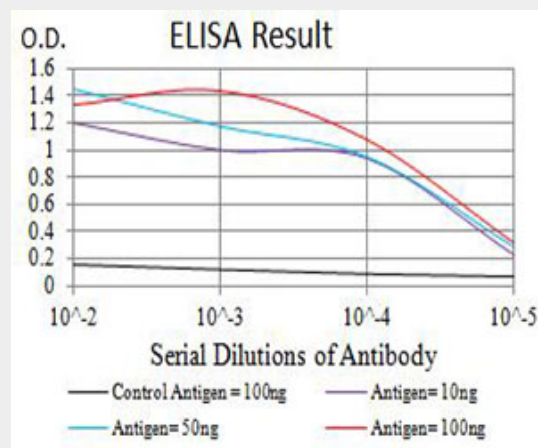


Figure 1: Black line: Control Antigen (100 ng); Purple line: Antigen (10ng); Blue line: Antigen (50 ng); Red line: Antigen (100 ng)

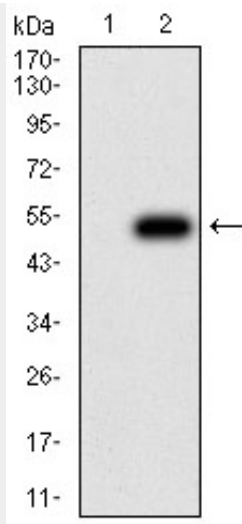


Figure 2:Western blot analysis using CD269 mAb against HEK293 (1) and CD269 (AA: 1-184)-hlgGfc transfected HEK293 (2) cell lysate.

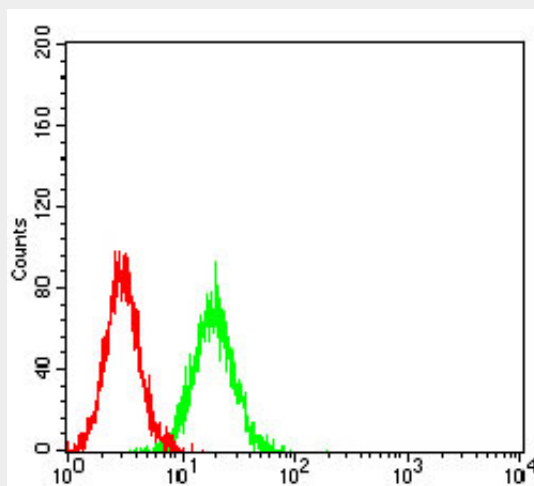


Figure 3:Flow cytometric analysis of K562 cells using CD269 mouse mAb (green) and negative control (red).

#### CD269 - References

- 1.Lupus. 2016 May;25(6):582-92.
- 2.Crit Rev Immunol. 2012;32(4):287-305.