

**ALDOA**  
**Purified Mouse Monoclonal Antibody**  
**Catalog # AO2617a**

**Specification**

---

**ALDOA - Product Information**

Application	E, WB, ICC
Primary Accession	<a href="#">P04075</a>
Reactivity	Human
Host	Mouse
Clonality	Monoclonal
Isotype	Mouse IgG1
Calculated MW	39.4kDa KDa

**Immunogen**

Purified recombinant fragment of human ALDOA (AA: 9-145) expressed in E. Coli.

**Formulation**

Purified antibody in PBS with 0.05% sodium azide

**ALDOA - Additional Information**

**Gene ID** 226

**Other Names**

ALDA; GSD12; HEL-S-87p

**Dilution**

E~~ 1/10000  
WB~~ 1/500 - 1/2000  
ICC~~ 1/100 - 1/500

**Storage**

Maintain refrigerated at 2-8°C for up to 6 months. For long term storage store at -20°C in small aliquots to prevent freeze-thaw cycles.

**Precautions**

ALDOA is for research use only and not for use in diagnostic or therapeutic procedures.

**ALDOA - Protein Information**

**Name** ALDOA ([HGNC:414](#))

**Synonyms** ALDA

**Function**

Catalyzes the reversible conversion of beta-D-fructose 1,6- bisphosphate (FBP) into two triose phosphate and plays a key role in glycolysis and gluconeogenesis (PubMed:<a

href="http://www.uniprot.org/citations/14766013" target="\_blank">14766013</a>). In addition, may also function as scaffolding protein (By similarity).

**Cellular Location**

Cytoplasm, myofibril, sarcomere, I band {ECO:0000250|UniProtKB:P00883}. Cytoplasm, myofibril, sarcomere, M line {ECO:0000250|UniProtKB:P00883}. Note=In skeletal muscle, accumulates around the M line and within the I band, colocalizing with FBP2 on both sides of the Z line in the absence of Ca(2+) {ECO:0000250|UniProtKB:P00883}

**ALDOA - Protocols**

Provided below are standard protocols that you may find useful for product applications.

- [Western Blot](#)
- [Blocking Peptides](#)
- [Dot Blot](#)
- [Immunohistochemistry](#)
- [Immunofluorescence](#)
- [Immunoprecipitation](#)
- [Flow Cytometry](#)
- [Cell Culture](#)

**ALDOA - Images**

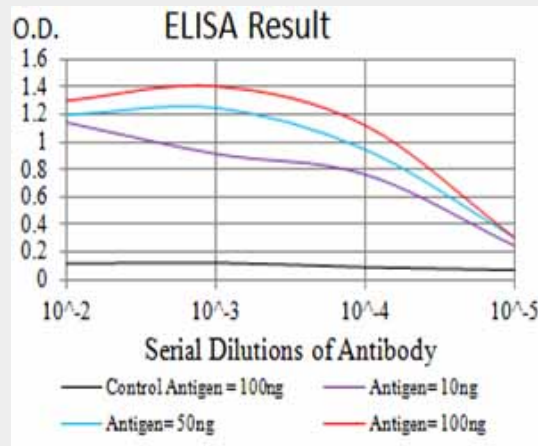


Figure 1:Black line: Control Antigen (100 ng);Purple line: Antigen (10ng); Blue line: Antigen (50 ng); Red line:Antigen (100 ng)

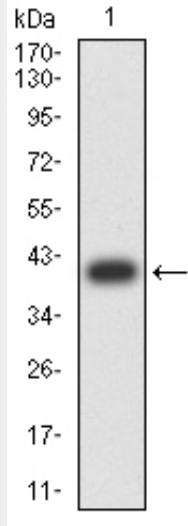


Figure 2:Western blot analysis using ALDOA mAb against human ALDOA (AA: 9-145) recombinant protein. (Expected MW is 40.7 kDa)

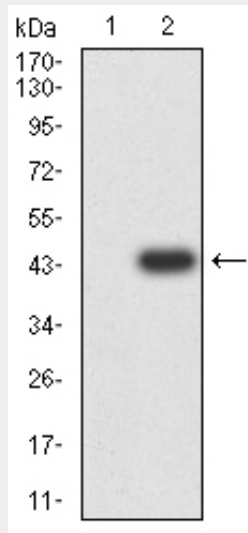


Figure 3:Western blot analysis using ALDOA mAb against HEK293 (1) and ALDOA (AA: 9-145)-hlgGfc transfected HEK293 (2) cell lysate.

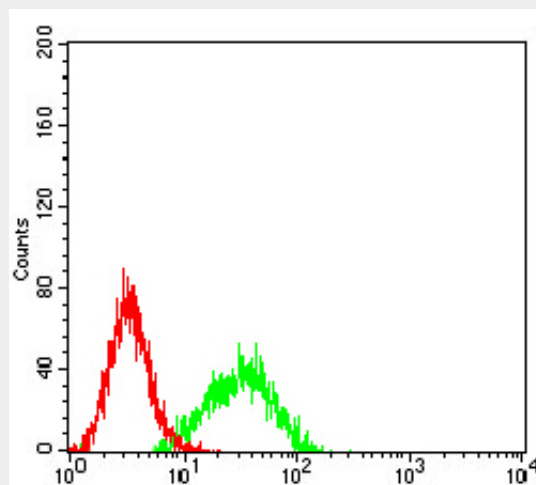


Figure 5:Flow cytometric analysis of K562 cells using ALDOA mouse mAb (green) and negative

control (red).

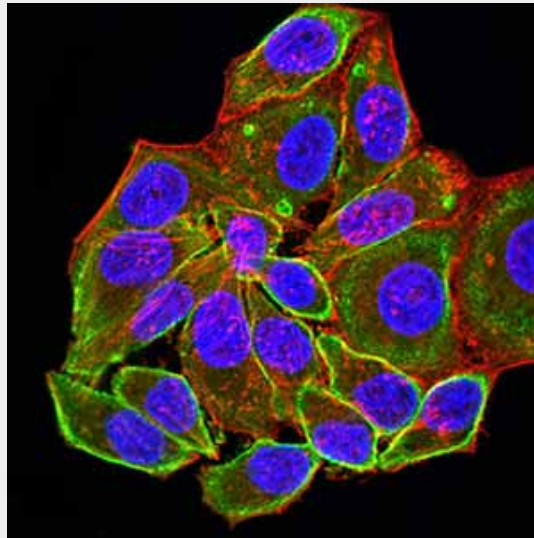


Figure 4: Immunofluorescence analysis of HeLa cells using ALDOA mouse mAb (green). Blue: DRAQ5 fluorescent DNA dye. Red: Actin filaments have been labeled with Alexa Fluor- 555 phalloidin. Secondary antibody from Fisher (Cat#: 35503)

#### **ALDOA - References**

1. Cancer Lett. 2016 Apr 28;374(1):127-35.
2. Oncol Rep. 2014 Nov;32(5):2031-7.