

GRM6
Purified Mouse Monoclonal Antibody
Catalog # AO2614a**Specification**

GRM6 - Product Information

| | |
|-------------------|------------------------|
| Application | E, WB |
| Primary Accession | O15303 |
| Reactivity | Human |
| Host | Mouse |
| Clonality | Monoclonal |
| Isotype | Mouse IgG1 |
| Calculated MW | 95.5kDa KDa |

Immunogen

Purified recombinant fragment of human GRM6 (AA: extra 480-585) expressed in E. Coli.

Formulation

Purified antibody in PBS with 0.05% sodium azide

GRM6 - Additional Information

Gene ID 2916

Other Names

mGlu6; CSNB1B; GPRC1F; MGLUR6

Dilution

E~~ 1/10000

WB~~ 1/500 - 1/2000

Storage

Maintain refrigerated at 2-8°C for up to 6 months. For long term storage store at -20°C in small aliquots to prevent freeze-thaw cycles.

Precautions

GRM6 is for research use only and not for use in diagnostic or therapeutic procedures.

GRM6 - Protein Information

Name GRM6

Synonyms GPRC1F, MGLUR6

Function

G-protein coupled receptor for glutamate. Ligand binding causes a conformation change that triggers signaling via guanine nucleotide-binding proteins (G proteins) and modulates the activity of down-stream effectors, such as adenylate cyclase. Signaling inhibits adenylate cyclase activity

(By similarity). Signaling stimulates TRPM1 channel activity and Ca(2+) uptake. Required for normal vision.

Cellular Location

Cell membrane; Multi-pass membrane protein. Endoplasmic reticulum membrane; Multi-pass membrane protein. Golgi apparatus membrane; Multi-pass membrane protein. Cell projection, dendrite Note=Subject to trafficking from the endoplasmic reticulum to the Golgi apparatus and then to the cell membrane

Tissue Location

Detected in melanocytes.

GRM6 - Protocols

Provided below are standard protocols that you may find useful for product applications.

- [Western Blot](#)
- [Blocking Peptides](#)
- [Dot Blot](#)
- [Immunohistochemistry](#)
- [Immunofluorescence](#)
- [Immunoprecipitation](#)
- [Flow Cytometry](#)
- [Cell Culture](#)

GRM6 - Images

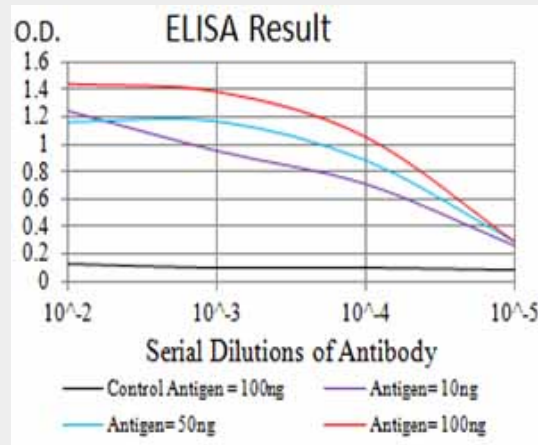


Figure 1:Black line: Control Antigen (100 ng);Purple line: Antigen (10ng); Blue line: Antigen (50 ng); Red line:Antigen (100 ng)

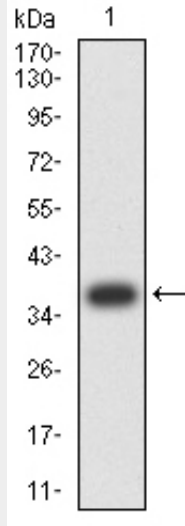


Figure 2:Western blot analysis using GRM6 mAb against human GRM6 (AA: extra 480-585) recombinant protein. (Expected MW is 37.5 kDa)

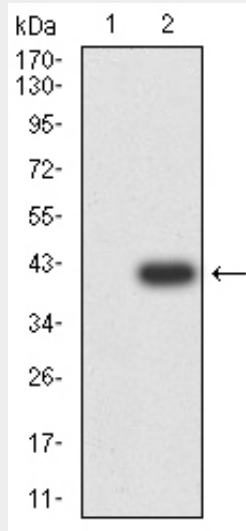


Figure 3:Western blot analysis using GRM6 mAb against HEK293 (1) and GRM6 (AA: extra 480-585)-hlgGfC transfected HEK293 (2) cell lysate.

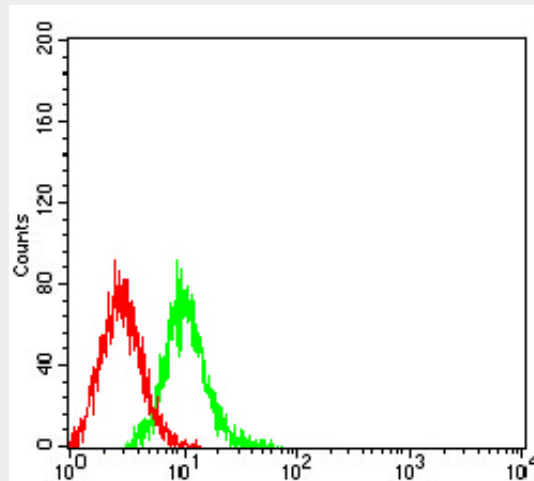


Figure 4:Flow cytometric analysis of K562 cells using GRM6 mouse mAb (green) and negative

control (red).

GRM6 - References

1. Pigment Cell Melanoma Res. 2013 May;26(3):348-56. 2. Mol Vis. 2009 Oct 19;15:2094-100.