

CHRN2
Purified Mouse Monoclonal Antibody
Catalog # AO2598a

Specification

CHRN2 - Product Information

Application	E, WB
Primary Accession	P17787
Reactivity	Human
Host	Mouse
Clonality	Monoclonal
Isotype	Mouse IgG2a
Calculated MW	57kDa KDa

Immunogen

Purified recombinant fragment of human CHRN2 (AA: extra 26-233) expressed in E. Coli.

Formulation

Purified antibody in PBS with 0.05% sodium azide

CHRN2 - Additional Information

Gene ID 1141

Other Names

EFNL3; nAChRB2

Dilution

E~~ 1/10000

WB~~ 1/500 - 1/2000

Storage

Maintain refrigerated at 2-8°C for up to 6 months. For long term storage store at -20°C in small aliquots to prevent freeze-thaw cycles.

Precautions

CHRN2 is for research use only and not for use in diagnostic or therapeutic procedures.

CHRN2 - Protein Information

Name CHRN2

Function

After binding acetylcholine, the AChR responds by an extensive change in conformation that affects all subunits and leads to opening of an ion-conducting channel across the plasma membrane permeable to sodium ions.

Cellular Location

Postsynaptic cell membrane; Multi-pass membrane protein. Cell membrane; Multi-pass membrane protein

CHRNA2 - Protocols

Provided below are standard protocols that you may find useful for product applications.

- [Western Blot](#)
- [Blocking Peptides](#)
- [Dot Blot](#)
- [Immunohistochemistry](#)
- [Immunofluorescence](#)
- [Immunoprecipitation](#)
- [Flow Cytometry](#)
- [Cell Culture](#)

CHRNA2 - Images

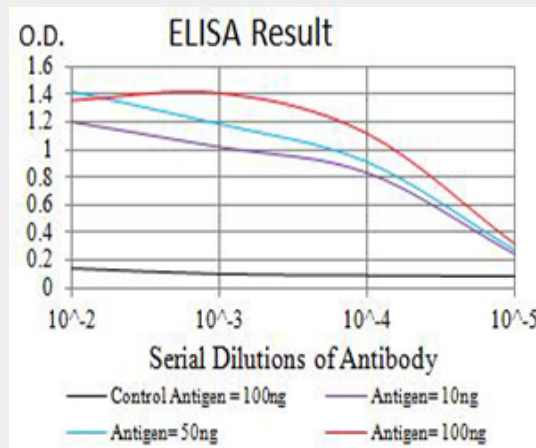


Figure 1: Black line: Control Antigen (100 ng); Purple line: Antigen (10ng); Blue line: Antigen (50 ng); Red line: Antigen (100 ng)

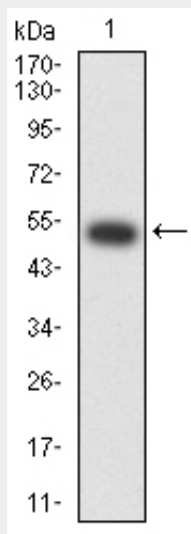


Figure 2: Western blot analysis using CHRNA2 mAb against human CHRNA2 (AA: extra 26-233)

recombinant protein. (Expected MW is 51 kDa)

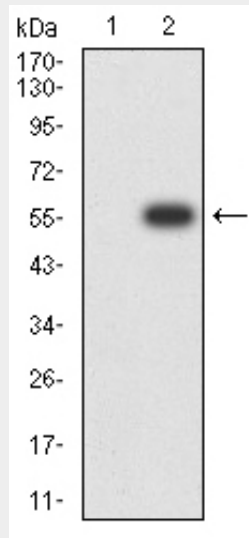


Figure 3:Western blot analysis using CHRNB2 mAb against HEK293 (1) and CHRNB2 (AA: extra 26-233)-hlgGfc transfected HEK293 (2) cell lysate.

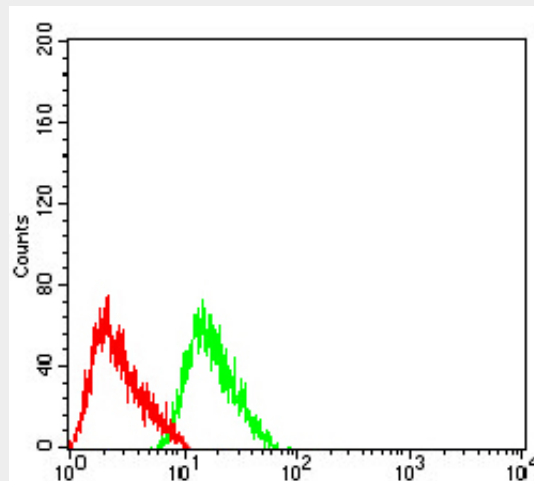


Figure 4:Flow cytometric analysis of SH-SY5Y cells using CHRNB2 mouse mAb (green) and negative control (red).

CHRNB2 - References

- 1.Prog Neuropsychopharmacol Biol Psychiatry. 2015 Jun 3;59:84-90.
- 2.Cancer Epidemiol Biomarkers Prev. 2009 Oct;18(10):2608-12.