

**GRM5**  
**Purified Mouse Monoclonal Antibody**  
**Catalog # AO2588a**

**Specification**

---

**GRM5 - Product Information**

Application	E, WB, ICC, IHC
Primary Accession	<a href="#">P41594</a>
Reactivity	Human
Host	Mouse
Clonality	Monoclonal
Isotype	Mouse IgG1
Calculated MW	132.5kDa KDa

**Immunogen**

Purified recombinant fragment of human GRM5 (AA: extra 458-580) expressed in E. Coli.

**Formulation**

Purified antibody in PBS with 0.05% sodium azide

**GRM5 - Additional Information**

**Gene ID** 2915

**Other Names**

mGlu5; GPRC1E; MGLUR5; PPP1R86

**Dilution**

E~~ 1/10000  
WB~~ 1/500 - 1/2000  
ICC~~ 1/200 - 1/1000  
IHC~~ 1/200 - 1/1000

**Storage**

Maintain refrigerated at 2-8°C for up to 6 months. For long term storage store at -20°C in small aliquots to prevent freeze-thaw cycles.

**Precautions**

GRM5 is for research use only and not for use in diagnostic or therapeutic procedures.

**GRM5 - Protein Information**

**Name** GRM5

**Synonyms** GPRC1E, MGLUR5

**Function**

G-protein coupled receptor for glutamate. Ligand binding causes a conformation change that

triggers signaling via guanine nucleotide-binding proteins (G proteins) and modulates the activity of down-stream effectors. Signaling activates a phosphatidylinositol- calcium second messenger system and generates a calcium-activated chloride current. Plays an important role in the regulation of synaptic plasticity and the modulation of the neural network activity.

#### Cellular Location

Cell membrane; Multi-pass membrane protein

#### GRM5 - Protocols

Provided below are standard protocols that you may find useful for product applications.

- [Western Blot](#)
- [Blocking Peptides](#)
- [Dot Blot](#)
- [Immunohistochemistry](#)
- [Immunofluorescence](#)
- [Immunoprecipitation](#)
- [Flow Cytometry](#)
- [Cell Culture](#)

#### GRM5 - Images

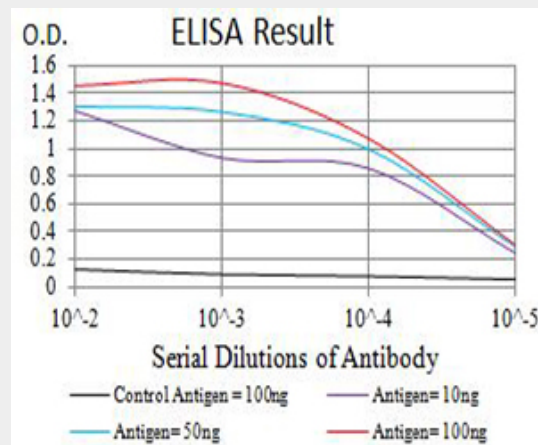


Figure 1: Black line: Control Antigen (100 ng); Purple line: Antigen (10ng); Blue line: Antigen (50 ng); Red line: Antigen (100 ng)

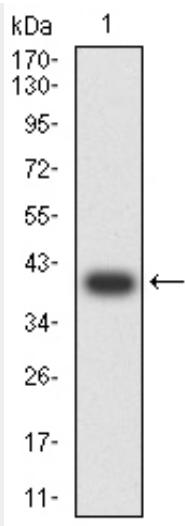


Figure 2:Western blot analysis using GRM5 mAb against human GRM5 (AA: extra 458-580) recombinant protein. (Expected MW is 40.1 kDa)

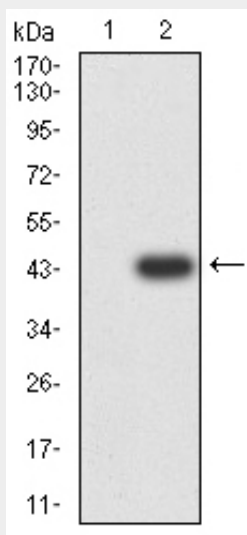


Figure 3:Western blot analysis using GRM5 mAb against HEK293 (1) and GRM5 (AA: extra 458-580)-hlgGfc transfected HEK293 (2) cell lysate.

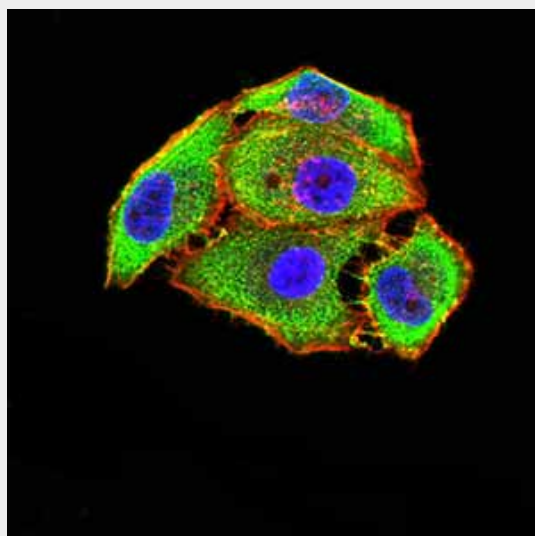


Figure 4: Immunofluorescence analysis of Hela cells using GRM5 mouse mAb (green). Blue: DRAQ5 fluorescent DNA dye. Red: Actin filaments have been labeled with Alexa Fluor- 555 phalloidin. Secondary antibody from Fisher (Cat#: 35503)

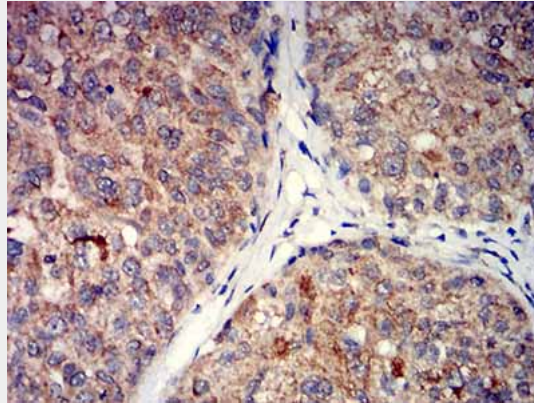
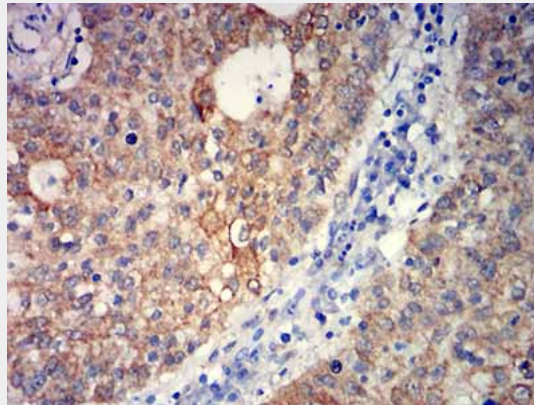


Figure 5: Immunohistochemical analysis of paraffin-embedded bladder cancer tissues using GRM5 mouse mAb with DAB staining.



1/200 - 1/1000

#### **GRM5 - References**

1. Curr Alzheimer Res. 2014;11(7):694-705. 2. Int J Neuropsychopharmacol. 2014 Dec;17(12):1915-22.