

**GRM3**  
**Purified Mouse Monoclonal Antibody**  
**Catalog # AO2585a****Specification**

---

**GRM3 - Product Information**

Application	E, WB, ICC, IHC
Primary Accession	<a href="#">Q14832</a>
Reactivity	Human
Host	Mouse
Clonality	Monoclonal
Isotype	Mouse IgG2a
Calculated MW	99kDa KDa

**Immunogen**

Purified recombinant fragment of human GRM3 (AA: extra 433-576) expressed in E. Coli.

**Formulation**

Purified antibody in PBS with 0.05% sodium azide

**GRM3 - Additional Information**

**Gene ID** 2913

**Other Names**

GLUR3; mGlu3; GPRC1C; MGLUR3

**Dilution**

E~~ 1/10000  
WB~~ 1/500 - 1/2000  
ICC~~ 1/200 - 1/1000  
IHC~~ 1/200 - 1/1000

**Storage**

Maintain refrigerated at 2-8°C for up to 6 months. For long term storage store at -20°C in small aliquots to prevent freeze-thaw cycles.

**Precautions**

GRM3 is for research use only and not for use in diagnostic or therapeutic procedures.

**GRM3 - Protein Information**

**Name** GRM3

**Synonyms** GPRC1C, MGLUR3

**Function**

G-protein coupled receptor for glutamate. Ligand binding causes a conformation change that

triggers signaling via guanine nucleotide-binding proteins (G proteins) and modulates the activity of down-stream effectors. Signaling inhibits adenylate cyclase activity.

#### Cellular Location

Cell membrane; Multi-pass membrane protein

#### Tissue Location

Detected in brain cortex, thalamus, subthalamic nucleus, substantia nigra, hypothalamus, hippocampus, corpus callosum, caudate nucleus and amygdala.

### GRM3 - Protocols

Provided below are standard protocols that you may find useful for product applications.

- [Western Blot](#)
- [Blocking Peptides](#)
- [Dot Blot](#)
- [Immunohistochemistry](#)
- [Immunofluorescence](#)
- [Immunoprecipitation](#)
- [Flow Cytometry](#)
- [Cell Culture](#)

### GRM3 - Images

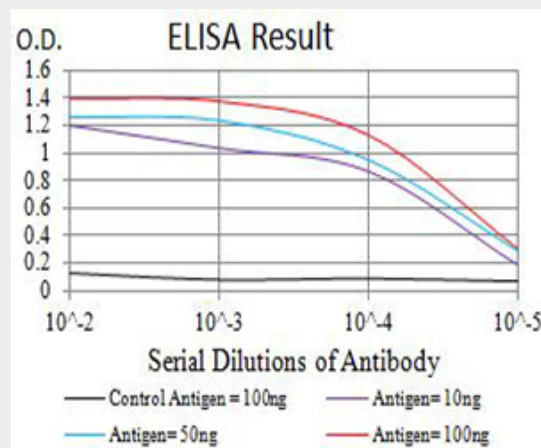


Figure 1: Black line: Control Antigen (100 ng); Purple line: Antigen (10ng); Blue line: Antigen (50 ng); Red line: Antigen (100 ng)

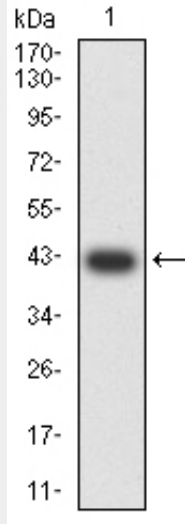


Figure 2:Western blot analysis using GRM3 mAb against human GRM3 (AA: extra 433-576) recombinant protein. (Expected MW is 42.4 kDa)

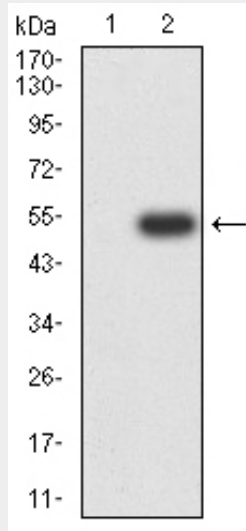


Figure 3:Western blot analysis using GRM3 mAb against HEK293 (1) and GRM3 (AA: extra 433-576)-hlgGfC transfected HEK293 (2) cell lysate.

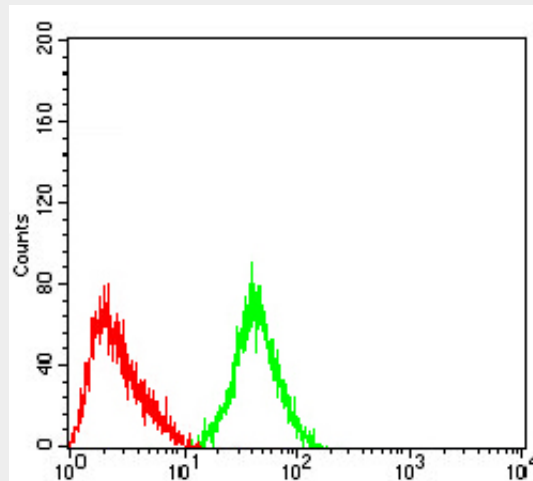


Figure 5:Flow cytometric analysis of SH-SY5Y cells using GRM3 mouse mAb (green) and negative

control (red).

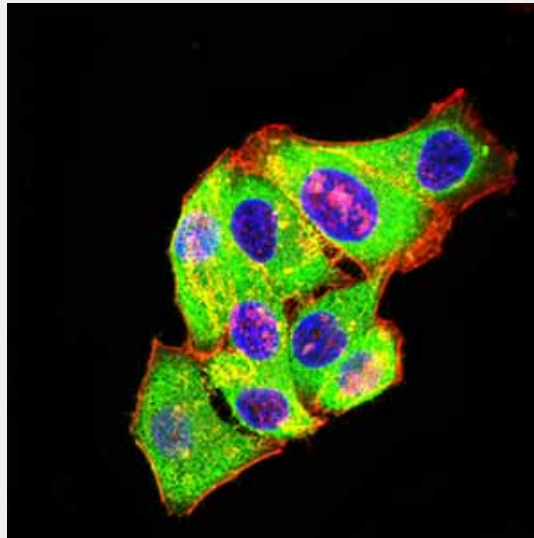


Figure 4:Immunofluorescence analysis of HeLa cells using GRM3 mouse mAb (green). Blue: DRAQ5 fluorescent DNA dye. Red: Actin filaments have been labeled with Alexa Fluor- 555 phalloidin. Secondary antibody from Fisher (Cat#: 35503)

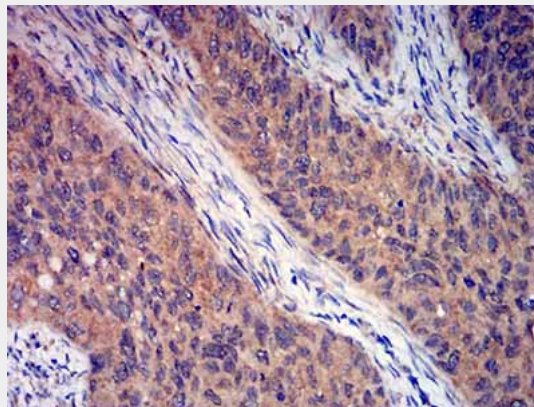


Figure 6:Immunohistochemical analysis of paraffin-embedded cervical cancer tissues using GRM3 mouse mAb with DAB staining.

#### **GRM3 - References**

- 1.Prog Neuropsychopharmacol Biol Psychiatry. 2015 Oct 1;62:14-21.
- 2.Cell Mol Biol (Noisy-le-grand). 2014 Sep 6;60(2):42-9.