

CHRNA5
Purified Mouse Monoclonal Antibody
Catalog # AO2580a

Specification

CHRNA5 - Product Information

Application	E, WB
Primary Accession	P30532
Reactivity	Human, Rat
Host	Mouse
Clonality	Monoclonal
Isotype	Mouse IgG2a
Calculated MW	53kDa KDa

Immunogen

Purified recombinant fragment of human CHRNA5 (AA: extra 23-254) expressed in E. Coli.

Formulation

Purified antibody in PBS with 0.05% sodium azide

CHRNA5 - Additional Information

Gene ID 1138

Other Names

LNCR2

Dilution

E~~ 1/10000

WB~~ 1/500 - 1/2000

Storage

Maintain refrigerated at 2-8°C for up to 6 months. For long term storage store at -20°C in small aliquots to prevent freeze-thaw cycles.

Precautions

CHRNA5 is for research use only and not for use in diagnostic or therapeutic procedures.

CHRNA5 - Protein Information

Name CHRNA5

Synonyms NACHRA5

Function

After binding acetylcholine, the AChR responds by an extensive change in conformation that affects all subunits and leads to opening of an ion-conducting channel across the plasma membrane.

Cellular Location

Postsynaptic cell membrane; Multi-pass membrane protein. Cell membrane; Multi-pass membrane protein

CHRNA5 - Protocols

Provided below are standard protocols that you may find useful for product applications.

- [Western Blot](#)
- [Blocking Peptides](#)
- [Dot Blot](#)
- [Immunohistochemistry](#)
- [Immunofluorescence](#)
- [Immunoprecipitation](#)
- [Flow Cytometry](#)
- [Cell Culture](#)

CHRNA5 - Images

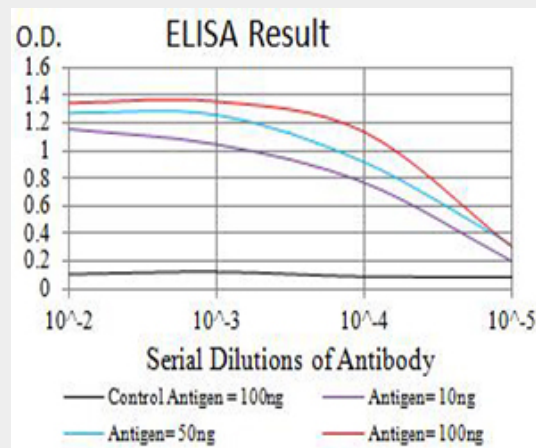


Figure 1: Black line: Control Antigen (100 ng); Purple line: Antigen (10ng); Blue line: Antigen (50 ng); Red line: Antigen (100 ng)

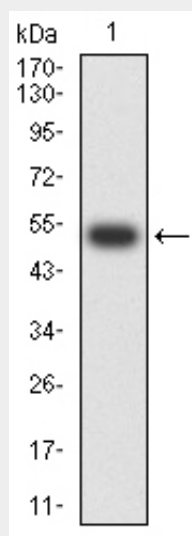


Figure 2:Western blot analysis using CHRNA5 mAb against human CHRNA5 (AA: 23-254) recombinant protein. (Expected MW is 52.5 kDa)

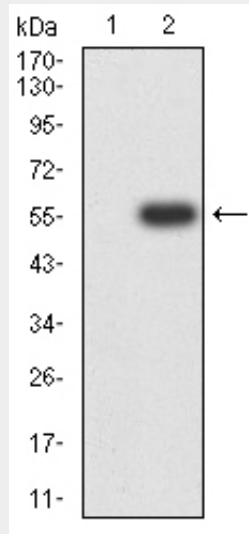


Figure 3:Western blot analysis using CHRNA5 mAb against HEK293 (1) and CHRNA5 (AA: 23-254)-hlgGFc transfected HEK293 (2) cell lysate.

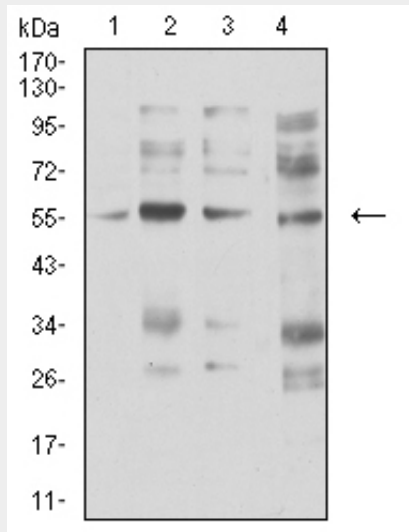


Figure 4:Western blot analysis using CHRNA5 mouse mAb against membrane protein lysate of C6 (1), membrane protein lysate of SK-N-SH (2), membrane protein lysate of C6 (3), and C6 (4) cell lysate.

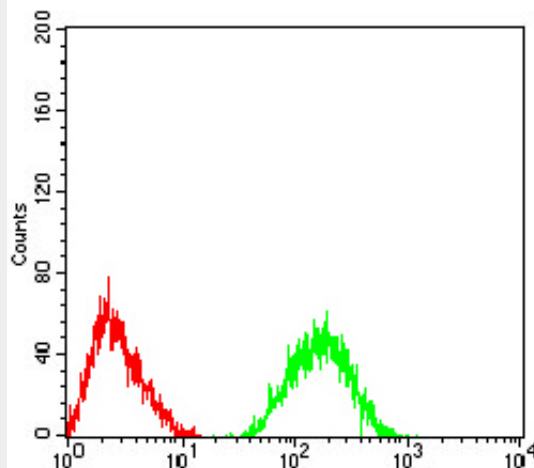


Figure 5:Flow cytometric analysis of SK-N-SH cells using CHRNA5 mouse mAb (green) and negative control (red).

CHRNA5 - References

1.Asian Pac J Cancer Prev. 2015;16(15):6685-90.2.Nicotine Tob Res. 2016 Feb;18(2):212-20.