

**CHRNA5**  
**Purified Mouse Monoclonal Antibody**  
**Catalog # AO2579a****Specification**

---

**CHRNA5 - Product Information**

Application	<b>E, WB</b>
Primary Accession	<a href="#">P30532</a>
Reactivity	<b>Human, Rat</b>
Host	<b>Mouse</b>
Clonality	<b>Monoclonal</b>
Isotype	<b>Mouse IgG1</b>
Calculated MW	<b>53kDa KDa</b>

**Immunogen**

Purified recombinant fragment of human CHRNA5 (AA: extra 23-254) expressed in E. Coli.

**Formulation**

Purified antibody in PBS with 0.05% sodium azide

**CHRNA5 - Additional Information**

**Gene ID** 1138

**Other Names**

LNCR2

**Dilution**

E~~ 1/10000

WB~~ 1/500 - 1/2000

**Storage**

Maintain refrigerated at 2-8°C for up to 6 months. For long term storage store at -20°C in small aliquots to prevent freeze-thaw cycles.

**Precautions**

CHRNA5 is for research use only and not for use in diagnostic or therapeutic procedures.

**CHRNA5 - Protein Information**

**Name** CHRNA5

**Synonyms** NACHRA5

**Function**

After binding acetylcholine, the AChR responds by an extensive change in conformation that affects all subunits and leads to opening of an ion-conducting channel across the plasma membrane.

### Cellular Location

Postsynaptic cell membrane; Multi-pass membrane protein. Cell membrane; Multi-pass membrane protein

### CHRNA5 - Protocols

Provided below are standard protocols that you may find useful for product applications.

- [Western Blot](#)
- [Blocking Peptides](#)
- [Dot Blot](#)
- [Immunohistochemistry](#)
- [Immunofluorescence](#)
- [Immunoprecipitation](#)
- [Flow Cytometry](#)
- [Cell Culture](#)

### CHRNA5 - Images

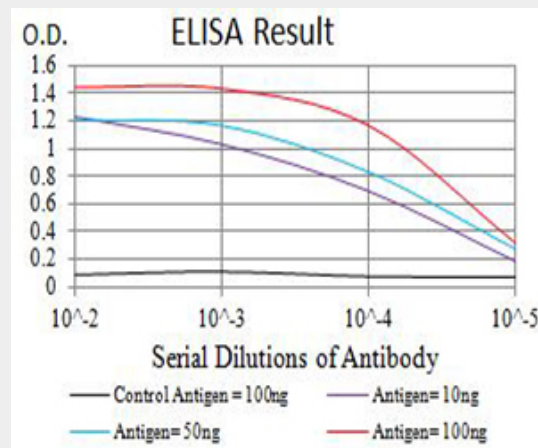


Figure 1: Black line: Control Antigen (100 ng); Purple line: Antigen (10ng); Blue line: Antigen (50 ng); Red line: Antigen (100 ng)

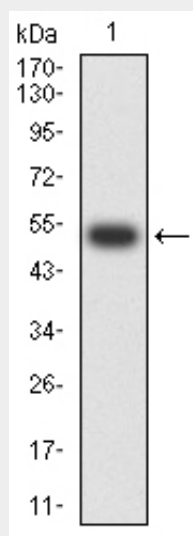


Figure 2:Western blot analysis using CHRNA5 mAb against human CHRNA5 (AA: 23-254) recombinant protein. (Expected MW is 52.5 kDa)

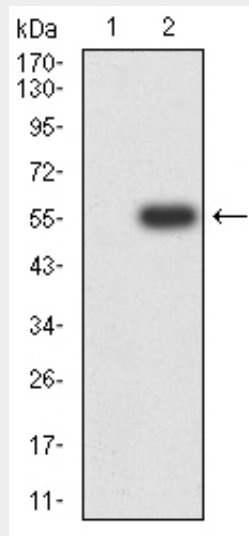


Figure 3:Western blot analysis using CHRNA5 mAb against HEK293 (1) and CHRNA5 (AA: 23-254)-hlgGfc transfected HEK293 (2) cell lysate.

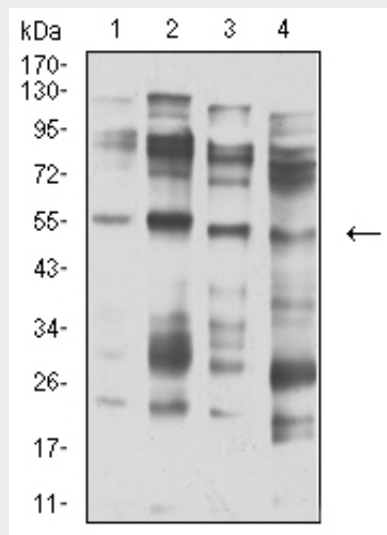


Figure 4:Western blot analysis using CHRNA5 mouse mAb against membrane protein lysate of C6 (1), membrane protein lysate of SK-N-SH (2), membrane protein lysate of C6 (3), and C6 (4) cell lysate.

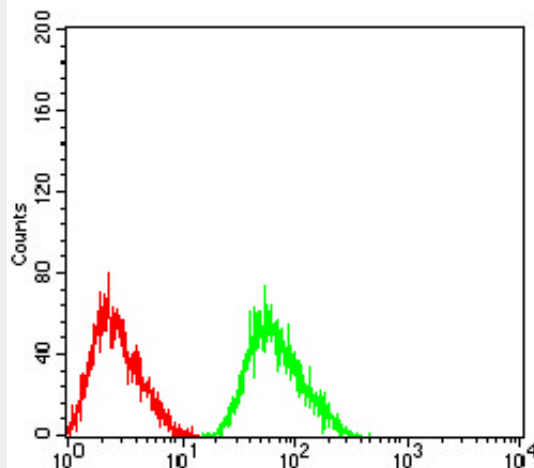


Figure 5:Flow cytometric analysis of SK-N-SH cells using CHRNA5 mouse mAb (green) and negative control (red).

#### **CHRNA5 - References**

- 1.Asian Pac J Cancer Prev. 2015;16(15):6685-90.
- 2.Nicotine Tob Res. 2016 Feb;18(2):212-20.