

AEBP2
Purified Mouse Monoclonal Antibody
Catalog # AO2516a

Specification

AEBP2 - Product Information

Application	E, WB, ICC
Primary Accession	O6ZN18
Reactivity	Human
Host	Mouse
Clonality	Monoclonal
Isotype	Mouse IgG1
Calculated MW	54.5kDa KDa

Immunogen

Purified recombinant fragment of human AEBP2 (AA: 358-495) expressed in E. Coli.

Formulation

Purified antibody in PBS with 0.05% sodium azide

AEBP2 - Additional Information

Gene ID 121536

Dilution

E~~ 1/10000
WB~~ 1/500 - 1/2000
ICC~~ 1/100 - 1/500

Storage

Maintain refrigerated at 2-8°C for up to 6 months. For long term storage store at -20°C in small aliquots to prevent freeze-thaw cycles.

Precautions

AEBP2 is for research use only and not for use in diagnostic or therapeutic procedures.

AEBP2 - Protein Information

Name AEBP2

Function

Acts as an accessory subunit for the core Polycomb repressive complex 2 (PRC2), which mediates histone H3K27 (H3K27me3) trimethylation on chromatin leading to transcriptional repression of the affected target gene (PubMed: [15225548](http://www.uniprot.org/citations/15225548), PubMed: [29499137](http://www.uniprot.org/citations/29499137), PubMed: [31959557](http://www.uniprot.org/citations/31959557)). Plays a role in nucleosome localization of the PRC2 complex (PubMed: [29499137](http://www.uniprot.org/citations/29499137)).

Cellular Location

Nucleus. Note=Localizes to chromatin as part of the PRC2 complex

AEBP2 - Protocols

Provided below are standard protocols that you may find useful for product applications.

- [Western Blot](#)
- [Blocking Peptides](#)
- [Dot Blot](#)
- [Immunohistochemistry](#)
- [Immunofluorescence](#)
- [Immunoprecipitation](#)
- [Flow Cytometry](#)
- [Cell Culture](#)

AEBP2 - Images

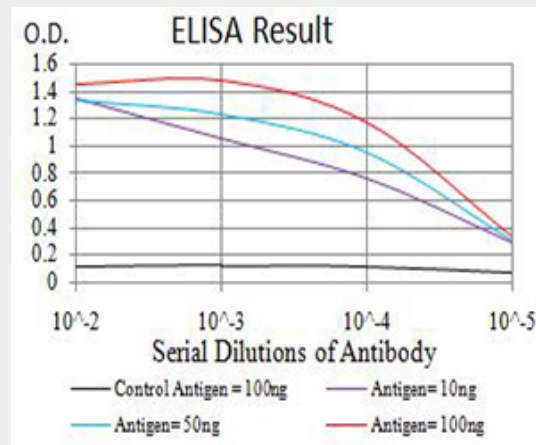


Figure 1:Black line: Control Antigen (100 ng);Purple line: Antigen (10ng); Blue line: Antigen (50 ng); Red line:Antigen (100 ng)

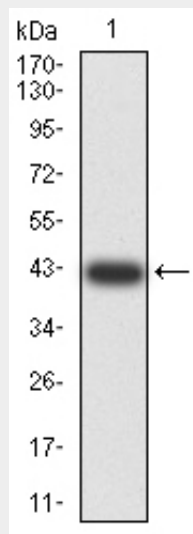


Figure 2:Western blot analysis using AEBP2 mAb against human AEBP2 (AA: 358-495)

recombinant protein. (Expected MW is 41.8 kDa)

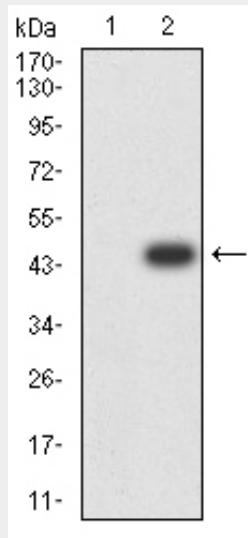


Figure 3:Western blot analysis using AEBP2 mAb against HEK293 (1) and AEBP2 (AA: 358-495)-hlgGfc transfected HEK293 (2) cell lysate.

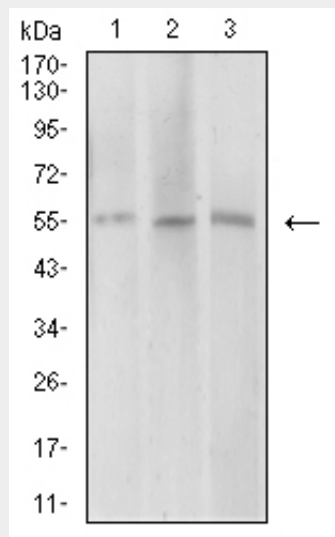


Figure 4:Western blot analysis using AEBP2 mouse mAb against COS7 (1), HepG2 (2), and SK-MES-1 (3) cell lysate.

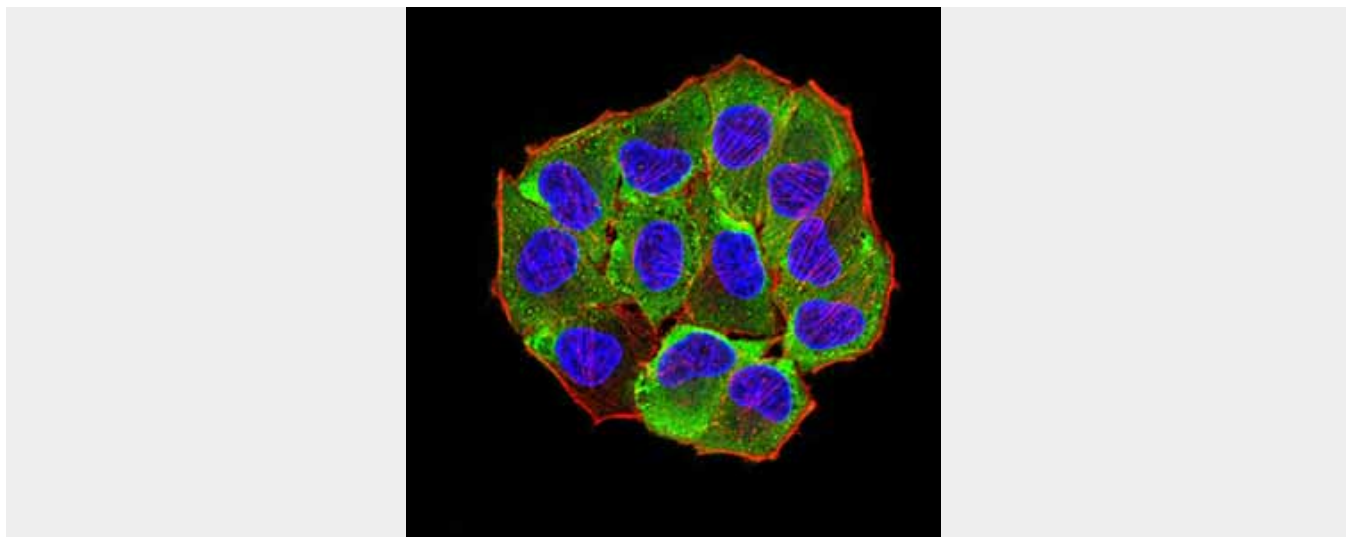


Figure 5: Immunofluorescence analysis of HeLa cells using AEBP2 mouse mAb (green). Blue: DRAQ5 fluorescent DNA dye. Red: Actin filaments have been labeled with Alexa Fluor-555 phalloidin. Secondary antibody from Fisher (Cat#: 35503)

AEBP2 - References

1. PLoS One. 2015 Apr 27;10(4):e0126966. 2. Elife. 2012 Oct 30;1:e00005.