

Mouse Monoclonal Antibody to CDC37
Purified Mouse Monoclonal Antibody
Catalog # AO2488a**Specification**

Mouse Monoclonal Antibody to CDC37 - Product Information

Application	E, WB
Primary Accession	O16543
Reactivity	Human
Host	Mouse
Clonality	Monoclonal
Isotype	Mouse IgG2a
Calculated MW	44.5kDa KDa

Description

The protein encoded by this gene is highly similar to Cdc 37, a cell division cycle control protein of *Saccharomyces cerevisiae*. This protein is a molecular chaperone with specific function in cell signal transduction. It has been shown to form complex with Hsp90 and a variety of protein kinases including CDK4, CDK6, SRC, RAF-1, MOK, as well as eIF2 alpha kinases. It is thought to play a critical role in directing Hsp90 to its target kinases.;

Immunogen

Purified recombinant fragment of human CDC37 (AA: 241-378) expressed in *E. Coli*.

Formulation

Purified antibody in PBS with 0.05% sodium azide

Application Note

ELISA: 1/10000; WB: 1/500 - 1/2000;

Mouse Monoclonal Antibody to CDC37 - Additional Information

Gene ID 11140

Other Names

P50CDC37

Storage

Maintain refrigerated at 2-8°C for up to 6 months. For long term storage store at -20°C in small aliquots to prevent freeze-thaw cycles.

Precautions

Mouse Monoclonal Antibody to CDC37 is for research use only and not for use in diagnostic or therapeutic procedures.

Mouse Monoclonal Antibody to CDC37 - Protein Information

Name CDC37

Synonyms CDC37A

Function

Co-chaperone that binds to numerous kinases and promotes their interaction with the Hsp90 complex, resulting in stabilization and promotion of their activity (PubMed:8666233). Inhibits HSP90AA1 ATPase activity (PubMed:23569206).

Cellular Location

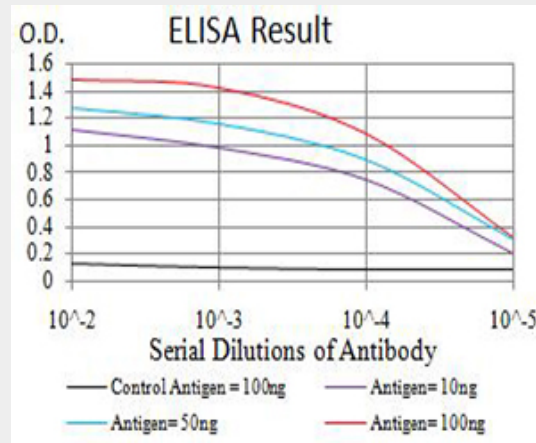
Cytoplasm.

Mouse Monoclonal Antibody to CDC37 - Protocols

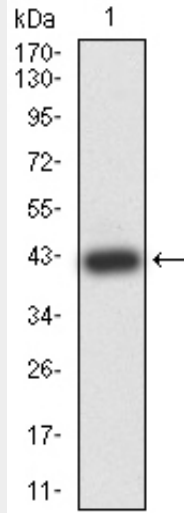
Provided below are standard protocols that you may find useful for product applications.

- [Western Blot](#)
- [Blocking Peptides](#)
- [Dot Blot](#)
- [Immunohistochemistry](#)
- [Immunofluorescence](#)
- [Immunoprecipitation](#)
- [Flow Cytometry](#)
- [Cell Culture](#)

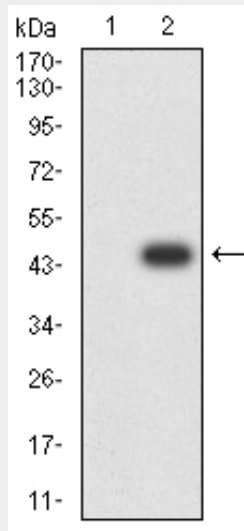
Mouse Monoclonal Antibody to CDC37 - Images



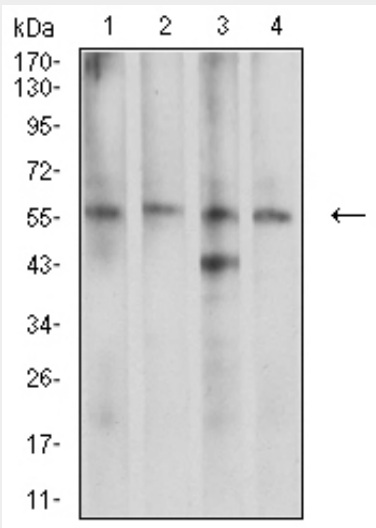
Black line: Control Antigen (100 ng);Purple line: Antigen (10ng); Blue line: Antigen (50 ng); Red line:Antigen (100 ng)



Western blot analysis using CDC37 mAb against human CDC37 (AA: 241-378) recombinant protein. (Expected MW is 41.6 kDa)



Western blot analysis using CDC37 mAb against HEK293 (1) and CDC37 (AA: 241-378)-hIgGfc transfected HEK293 (2) cell lysate.



Western blot analysis using CDC37 mouse mAb against K562 (1), LNcap (2), A431 (3), and HEK293 (4) cell lysate.

Mouse Monoclonal Antibody to CDC37 - References

1.Liver Int. 2015 Apr;35(4):1403-15. ; 2.Oncogene. 2009 Jan 15;28(2):157-69. ;