

Mouse Monoclonal Antibody to TCF4
Purified Mouse Monoclonal Antibody
Catalog # AO2478a**Specification**

Mouse Monoclonal Antibody to TCF4 - Product Information

Application	E, WB, FC
Primary Accession	P15884
Reactivity	Human
Host	Mouse
Clonality	Monoclonal
Isotype	Mouse IgG2b
Calculated MW	71.3kDa KDa

Description

This gene encodes transcription factor 4, a basic helix-loop-helix transcription factor. The encoded protein recognizes an Ephrussi-box ('E-box') binding site ('CANNTG') - a motif first identified in immunoglobulin enhancers. This gene is broadly expressed, and may play an important role in nervous system development. Defects in this gene are a cause of Pitt-Hopkins syndrome. In addition, an intronic CTG repeat normally numbering 10-37 repeat units can expand to >50 repeat units and cause Fuchs endothelial corneal dystrophy. Multiple alternatively spliced transcript variants that encode different proteins have been described. ;

Immunogen

Purified recombinant fragment of human TCF4 (AA: 518-667) expressed in E. Coli.

Formulation

Purified antibody in PBS with 0.05% sodium azide

Application Note

ELISA: 1/10000; WB: 1/500 - 1/2000; FCM: 1/200 - 1/400

Mouse Monoclonal Antibody to TCF4 - Additional Information

Gene ID 6925

Other Names

E2-2; ITF2; PTHS; SEF2; FECD3; ITF-2; SEF-2; TCF-4

Storage

Maintain refrigerated at 2-8°C for up to 6 months. For long term storage store at -20°C in small aliquots to prevent freeze-thaw cycles.

Precautions

Mouse Monoclonal Antibody to TCF4 is for research use only and not for use in diagnostic or therapeutic procedures.

Mouse Monoclonal Antibody to TCF4 - Protein Information

Name TCF4

Synonyms BHLHB19, ITF2, SEF2

Function

Transcription factor that binds to the immunoglobulin enhancer Mu-E5/KE5-motif. Involved in the initiation of neuronal differentiation. Activates transcription by binding to the E box (5'-CANNTG-3'). Binds to the E-box present in the somatostatin receptor 2 initiator element (SSTR2-INR) to activate transcription (By similarity). Preferentially binds to either 5'-ACANNTGT-3' or 5'-CCANNTGG-3'.

Cellular Location

Nucleus {ECO:0000255|PROSITE-ProRule:PRU00981, ECO:0000269|PubMed:22777675}

Tissue Location

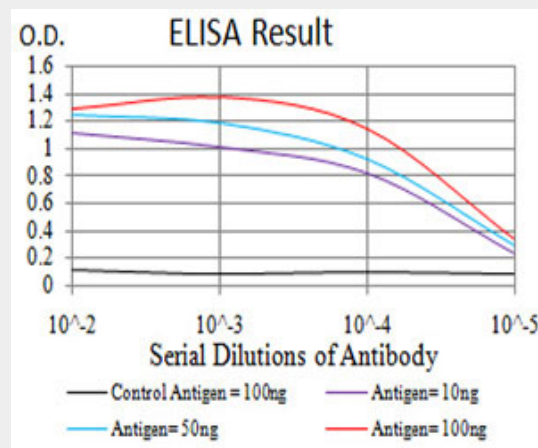
Expressed in adult heart, brain, placenta, skeletal muscle and to a lesser extent in the lung. In developing embryonic tissues, expression mostly occurs in the brain

Mouse Monoclonal Antibody to TCF4 - Protocols

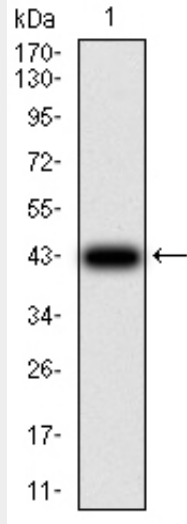
Provided below are standard protocols that you may find useful for product applications.

- [Western Blot](#)
- [Blocking Peptides](#)
- [Dot Blot](#)
- [Immunohistochemistry](#)
- [Immunofluorescence](#)
- [Immunoprecipitation](#)
- [Flow Cytometry](#)
- [Cell Culture](#)

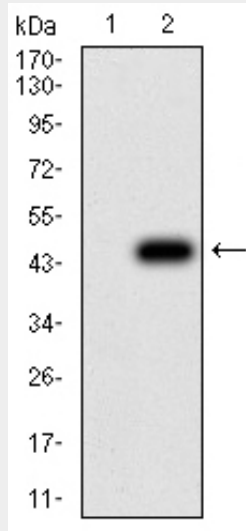
Mouse Monoclonal Antibody to TCF4 - Images



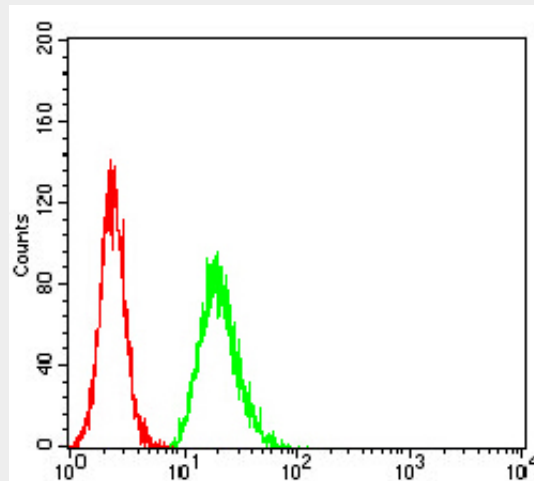
Black line: Control Antigen (100 ng);Purple line: Antigen (10ng); Blue line: Antigen (50 ng); Red line:Antigen (100 ng)



Western blot analysis using TCF4 mAb against human TCF4 (AA: 518-667) recombinant protein. (Expected MW is 43 kDa)



Western blot analysis using TCF4 mAb against HEK293 (1) and TCF4 (AA: 518-667)-hIgGFc transfected HEK293 (2) cell lysate.



Flow cytometric analysis of HeLa cells using TCF4 mouse mAb (green) and negative control (red).

Mouse Monoclonal Antibody to TCF4 - References

1.J Psychiatr Res. 2015 Oct;69:95-101. ; 2.Haematologica. 2014 Dec;99(12):e257-9.;