

**Mouse Monoclonal Antibody to RBFOX3**  
**Purified Mouse Monoclonal Antibody**  
**Catalog # AO2414a****Specification**

---

**Mouse Monoclonal Antibody to RBFOX3 - Product Information**

Application	E, WB, ICC, FC
Primary Accession	<a href="#">A6NFN3</a>
Reactivity	Human, Mouse
Host	Mouse
Clonality	Monoclonal
Isotype	Mouse IgG2a
Calculated MW	33.8kDa KDa

**Description**

RBFOX3 (RNA Binding Protein, Fox-1 Homolog (C. Elegans) 3) is a Protein Coding gene. Diseases associated with RBFOX3 include vertebral artery occlusion and tuberculum sellae meningioma. Among its related pathways are Neuroscience. GO annotations related to this gene include nucleic acid binding and nucleotide binding. An important paralog of this gene is RBFOX1.;

**Immunogen**

Purified recombinant fragment of human RBFOX3 (AA: 1-140) expressed in E. Coli.

**Formulation**

Purified antibody in PBS with 0.05% sodium azide

**Application Note**

ELISA: 1/10000; WB: 1/500 - 1/2000; ICC: 1/200 - 1/1000; FCM: 1/200 - 1/400

**Mouse Monoclonal Antibody to RBFOX3 - Additional Information**

**Gene ID** 146713

**Other Names**

FOX3; NEUN; FOX-3; HRNBP3

**Storage**

Maintain refrigerated at 2-8°C for up to 6 months. For long term storage store at -20°C in small aliquots to prevent freeze-thaw cycles.

**Precautions**

Mouse Monoclonal Antibody to RBFOX3 is for research use only and not for use in diagnostic or therapeutic procedures.

**Mouse Monoclonal Antibody to RBFOX3 - Protein Information**

**Name** RBFOX3

### Function

Pre-mRNA alternative splicing regulator. Regulates alternative splicing of RBFOX2 to enhance the production of mRNA species that are targeted for nonsense-mediated decay (NMD).

### Cellular Location

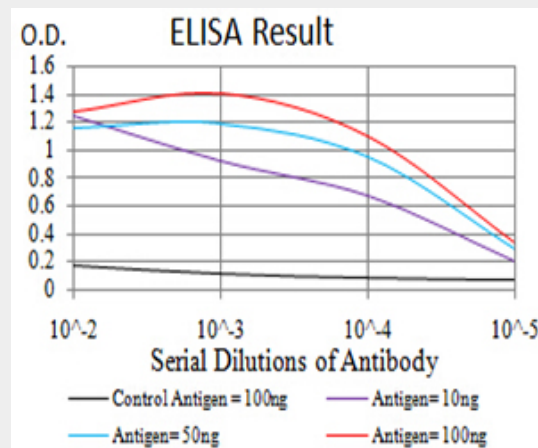
Nucleus. Cytoplasm. Note=Largely restricted to neuronal nuclei. However, significant cytoplasmic localization in neurons from brains from HIV-infected individuals with cognitive impairment

### Mouse Monoclonal Antibody to RBFOX3 - Protocols

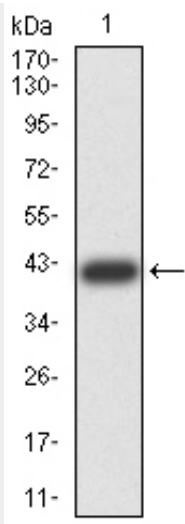
Provided below are standard protocols that you may find useful for product applications.

- [Western Blot](#)
- [Blocking Peptides](#)
- [Dot Blot](#)
- [Immunohistochemistry](#)
- [Immunofluorescence](#)
- [Immunoprecipitation](#)
- [Flow Cytometry](#)
- [Cell Culture](#)

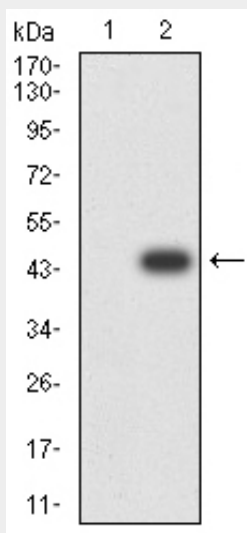
### Mouse Monoclonal Antibody to RBFOX3 - Images



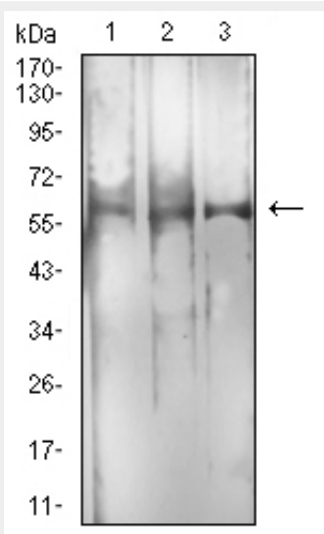
Black line: Control Antigen (100 ng);Purple line: Antigen (10ng); Blue line: Antigen (50 ng); Red line:Antigen (100 ng)



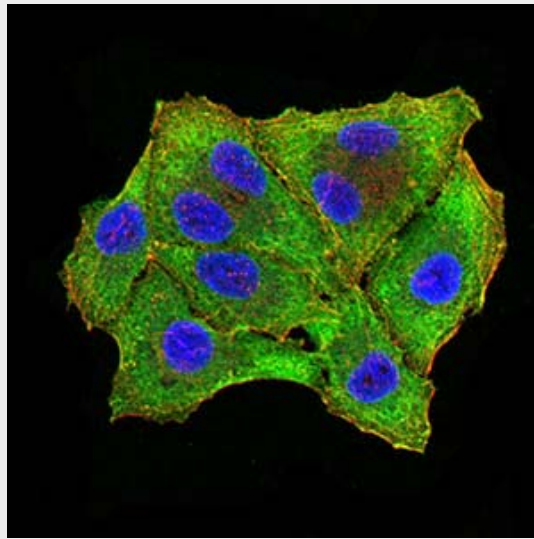
Western blot analysis using RBFOX3 mAb against human RBFOX3 (AA: 1-140) recombinant protein. (Expected MW is 41.4 kDa)



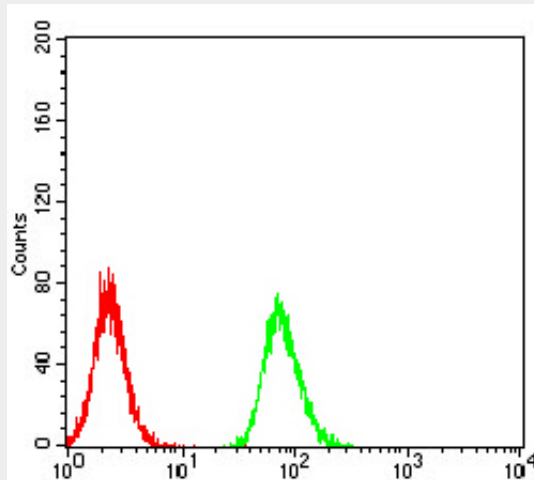
Western blot analysis using RBFOX3 mAb against HEK293 (1) and RBFOX3 (AA: 1-140)-hIgGFc transfected HEK293 (2) cell lysate.



Western blot analysis using RBFOX3 mouse mAb against C2C12 (1), RAW264.7 (2), and U251 (3) cell lysate.



Immunofluorescence analysis of Hela cells using RBFOX3 mouse mAb (green). Blue: DRAQ5 fluorescent DNA dye. Red: Actin filaments have been labeled with Alexa Fluor- 555 phalloidin. Secondary antibody from Fisher



Flow cytometric analysis of Hela cells using RBFOX3 mouse mAb (green) and negative control (red).

### Mouse Monoclonal Antibody to RBFOX3 - References

1. Neurosci Lett. 2014 Jan 13;558:97-102. ;
2. PLoS One. 2013 Sep 6;8(9):e73323. ;