

Mouse Monoclonal Antibody to CALB2
Purified Mouse Monoclonal Antibody
Catalog # AO2402a**Specification**

Mouse Monoclonal Antibody to CALB2 - Product Information

Application	E, WB, FC
Primary Accession	P22676
Reactivity	Human, Monkey
Host	Mouse
Clonality	Monoclonal
Isotype	Mouse IgG1
Calculated MW	31.5kDa KDa

Description

This gene encodes an intracellular calcium-binding protein belonging to the troponin C superfamily. Members of this protein family have six EF-hand domains which bind calcium. This protein plays a role in diverse cellular functions, including message targeting and intracellular calcium buffering. It also functions as a modulator of neuronal excitability, and is a diagnostic marker for some human diseases, including Hirschsprung disease and some cancers. Alternative splicing results in multiple transcript variants. This gene encodes an intracellular calcium-binding protein belonging to the troponin C superfamily. Members of this protein family have six EF-hand domains which bind calcium. This protein plays a role in diverse cellular functions, including message targeting and intracellular calcium buffering. It also functions as a modulator of neuronal excitability, and is a diagnostic marker for some human diseases, including Hirschsprung disease and some cancers. Alternative splicing results in multiple transcript variants. ;

Immunogen

Purified recombinant fragment of human CALB2 (AA: 172-271) expressed in E. Coli.

Formulation

Purified antibody in PBS with 0.05% sodium azide

Application Note

ELISA: 1/10000; WB: 1/500 - 1/2000; FCM: 1/200 - 1/400

Mouse Monoclonal Antibody to CALB2 - Additional Information

Gene ID 794

Other Names

CR; CAL2; CAB29

Storage

Maintain refrigerated at 2-8°C for up to 6 months. For long term storage store at -20°C in small aliquots to prevent freeze-thaw cycles.

Precautions

Mouse Monoclonal Antibody to CALB2 is for research use only and not for use in diagnostic or therapeutic procedures.

Mouse Monoclonal Antibody to CALB2 - Protein Information

Name CALB2

Synonyms CAB29

Function

Calretinin is a calcium-binding protein which is abundant in auditory neurons.

Tissue Location

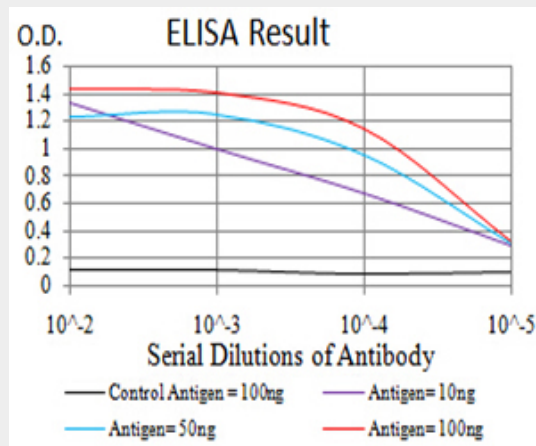
Brain.

Mouse Monoclonal Antibody to CALB2 - Protocols

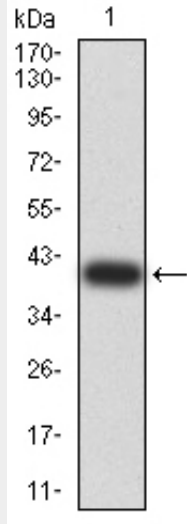
Provided below are standard protocols that you may find useful for product applications.

- [Western Blot](#)
- [Blocking Peptides](#)
- [Dot Blot](#)
- [Immunohistochemistry](#)
- [Immunofluorescence](#)
- [Immunoprecipitation](#)
- [Flow Cytometry](#)
- [Cell Culture](#)

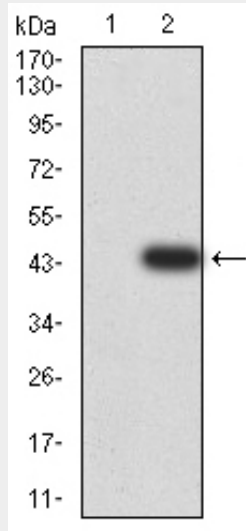
Mouse Monoclonal Antibody to CALB2 - Images



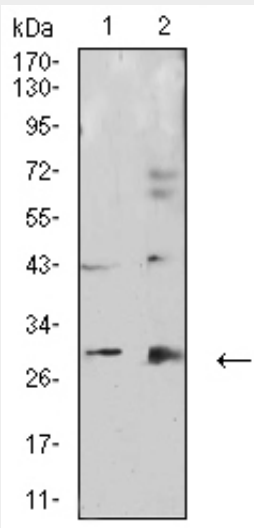
Black line: Control Antigen (100 ng); Purple line: Antigen (10ng); Blue line: Antigen (50 ng); Red line: Antigen (100 ng)



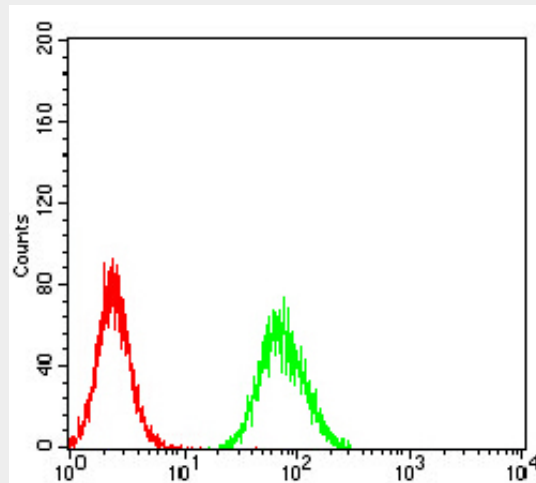
Western blot analysis using CALB2 mAb against human CALB2 (AA: 172-271) recombinant protein. (Expected MW is 39.2 kDa)



Western blot analysis using CALB2 mAb against HEK293 (1) and CALB2 (AA: 172-271)-hIgGfc transfected HEK293 (2) cell lysate.



Western blot analysis using CALB2 mouse mAb against HepG2 (1) and COS7 (2) cell lysate.



Flow cytometric analysis of Hela cells using CALB2 mouse mAb (green) and negative control (red).

Mouse Monoclonal Antibody to CALB2 - References

1.Hum Pathol. 2013 Dec;44(12):2743-50. ; 2.Int J Cancer. 2013 Nov;133(9):2077-88.;