

**Mouse Monoclonal Antibody to CALB2**  
**Purified Mouse Monoclonal Antibody**  
**Catalog # AO2401a****Specification**

---

**Mouse Monoclonal Antibody to CALB2 - Product Information**

Application	<b>E, WB, FC</b>
Primary Accession	<a href="#">P22676</a>
Reactivity	<b>Human</b>
Host	<b>Mouse</b>
Clonality	<b>Monoclonal</b>
Isotype	<b>Mouse IgG1</b>
Calculated MW	<b>31.5kDa KDa</b>

**Description**

This gene encodes an intracellular calcium-binding protein belonging to the troponin C superfamily. Members of this protein family have six EF-hand domains which bind calcium. This protein plays a role in diverse cellular functions, including message targeting and intracellular calcium buffering. It also functions as a modulator of neuronal excitability, and is a diagnostic marker for some human diseases, including Hirschsprung disease and some cancers. Alternative splicing results in multiple transcript variants. ;

**Immunogen**

Purified recombinant fragment of human CALB2 (AA: 172-271) expressed in E. Coli.

**Formulation**

Purified antibody in PBS with 0.05% sodium azide

**Application Note**

ELISA: 1/10000; WB: 1/500 - 1/2000; FCM: 1/200 - 1/400

**Mouse Monoclonal Antibody to CALB2 - Additional Information**

**Gene ID** 794

**Other Names**

CR; CAL2; CAB29

**Storage**

Maintain refrigerated at 2-8°C for up to 6 months. For long term storage store at -20°C in small aliquots to prevent freeze-thaw cycles.

**Precautions**

Mouse Monoclonal Antibody to CALB2 is for research use only and not for use in diagnostic or therapeutic procedures.

**Mouse Monoclonal Antibody to CALB2 - Protein Information**

**Name** CALB2

**Synonyms** CAB29

**Function**

Calretinin is a calcium-binding protein which is abundant in auditory neurons.

**Tissue Location**

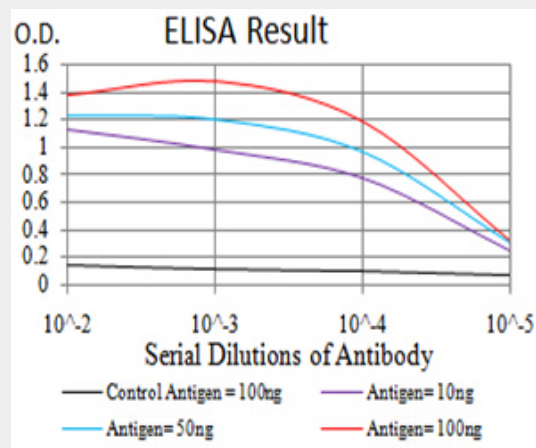
Brain.

**Mouse Monoclonal Antibody to CALB2 - Protocols**

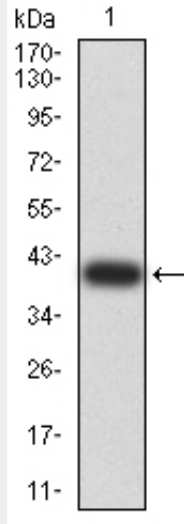
Provided below are standard protocols that you may find useful for product applications.

- [Western Blot](#)
- [Blocking Peptides](#)
- [Dot Blot](#)
- [Immunohistochemistry](#)
- [Immunofluorescence](#)
- [Immunoprecipitation](#)
- [Flow Cytometry](#)
- [Cell Culture](#)

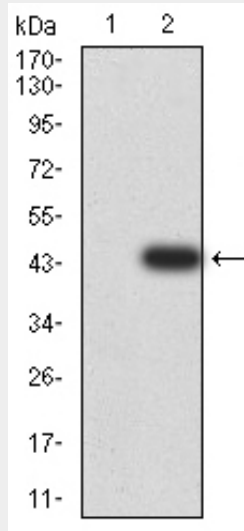
**Mouse Monoclonal Antibody to CALB2 - Images**



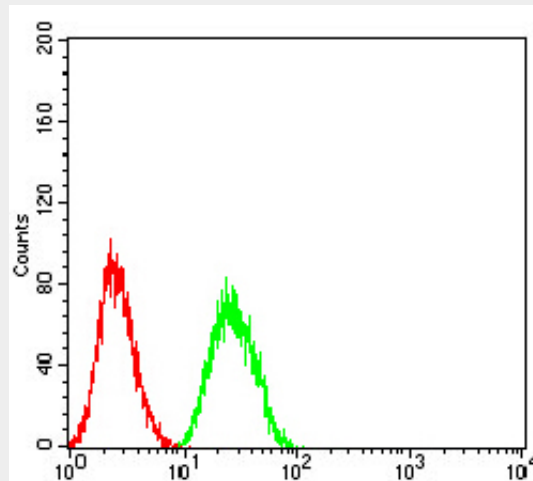
Black line: Control Antigen (100 ng);Purple line: Antigen (10ng); Blue line: Antigen (50 ng); Red line:Antigen (100 ng)



Western blot analysis using CALB2 mAb against human CALB2 (AA: 172-271) recombinant protein. (Expected MW is 39.2 kDa)

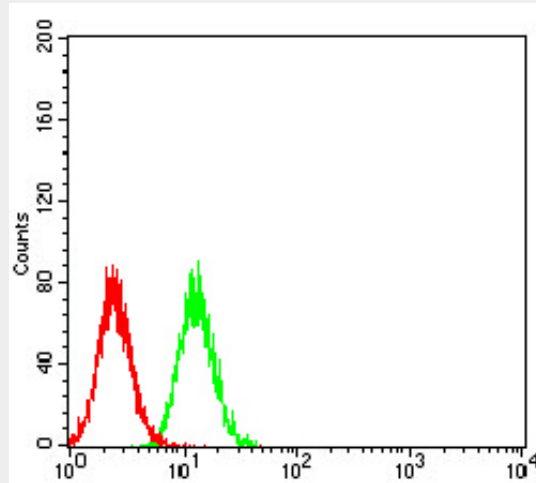


Western blot analysis using CALB2 mAb against HEK293 (1) and CALB2 (AA: 172-271)-hIgGFc transfected HEK293 (2) cell lysate.



Flow cytometric analysis of HeLa cells using CALB2 mouse mAb (green) and negative control

(red).



Flow cytometric analysis of A549 cells using CALB2 mouse mAb (green) and negative control (red).

#### **Mouse Monoclonal Antibody to CALB2 - References**

1.Hum Pathol. 2013 Dec;44(12):2743-50. ; 2.Int J Cancer. 2013 Nov;133(9):2077-88.;