

Mouse Monoclonal Antibody to KLF2
Purified Mouse Monoclonal Antibody
Catalog # AO2396a

Specification

Mouse Monoclonal Antibody to KLF2 - Product Information

Application	E, WB
Primary Accession	O9Y5W3
Reactivity	Human, Mouse
Host	Mouse
Clonality	Monoclonal
Isotype	Mouse IgG1
Calculated MW	37.4kDa KDa

Description

Kruppel-like factors (KLFs) are a family of broadly expressed zinc finger transcription factors. KLF2 regulates T-cell trafficking by promoting expression of the lipid-binding receptor S1P1 (S1PR1; MIM 601974) and the selectin CD62L (SELL; MIM 153240) (summary by Weinreich et al., 2009 [PubMed 19592277]).;

Immunogen

Purified recombinant fragment of human KLF2 (AA: 251-355) expressed in E. Coli.

Formulation

Purified antibody in PBS with 0.05% sodium azide

Application Note

ELISA: 1/10000; WB: 1/500 - 1/2000;

Mouse Monoclonal Antibody to KLF2 - Additional Information

Gene ID 10365

Other Names

LKLF

Storage

Maintain refrigerated at 2-8°C for up to 6 months. For long term storage store at -20°C in small aliquots to prevent freeze-thaw cycles.

Precautions

Mouse Monoclonal Antibody to KLF2 is for research use only and not for use in diagnostic or therapeutic procedures.

Mouse Monoclonal Antibody to KLF2 - Protein Information

Name KLF2

Synonyms KLF2

Function

Transcription factor that binds to the CACCC box in the promoter of target genes such as HBB/beta globin or NOV and activates their transcription (PubMed:21063504). Might be involved in transcriptional regulation by modulating the binding of the RARA nuclear receptor to RARE DNA elements (PubMed:28167758).

Cellular Location

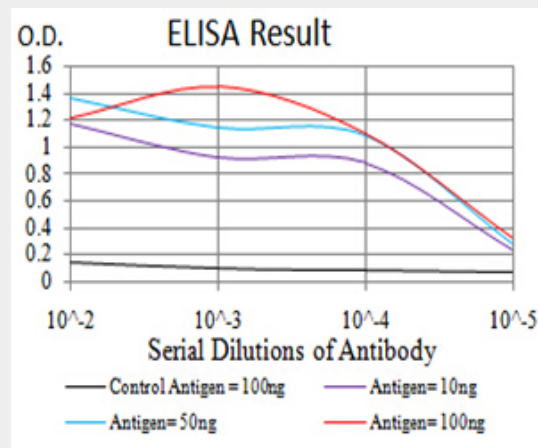
Nucleus.

Mouse Monoclonal Antibody to KLF2 - Protocols

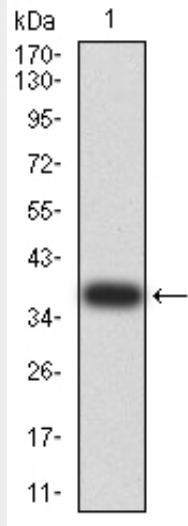
Provided below are standard protocols that you may find useful for product applications.

- [Western Blot](#)
- [Blocking Peptides](#)
- [Dot Blot](#)
- [Immunohistochemistry](#)
- [Immunofluorescence](#)
- [Immunoprecipitation](#)
- [Flow Cytometry](#)
- [Cell Culture](#)

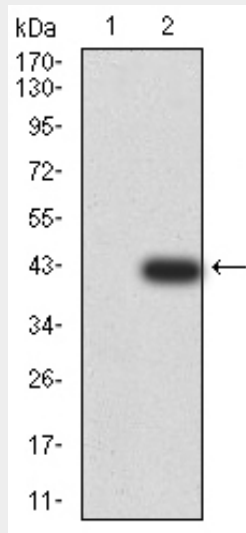
Mouse Monoclonal Antibody to KLF2 - Images



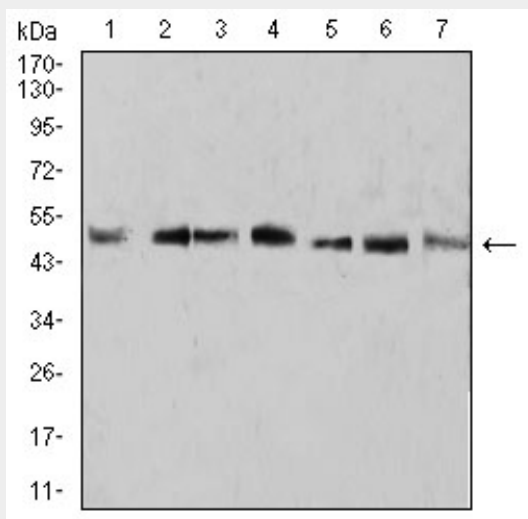
Black line: Control Antigen (100 ng);Purple line: Antigen (10ng); Blue line: Antigen (50 ng); Red line:Antigen (100 ng)



Western blot analysis using KLF2 mAb against human KLF2 (AA: 251-355) recombinant protein. (Expected MW is 38.4 kDa)



Western blot analysis using KLF2 mAb against HEK293 (1) and KLF2 (AA: 251-355)-hIgGFc transfected HEK293 (2) cell lysate.



Western blot analysis using KLF2 mouse mAb against A431 (1), U937 (2), NIH/3T3 (3), Raw264.7 (4), SPC-A-1 (5), SK-MES-1 (6), and MOLT4 (7) cell lysate.

Mouse Monoclonal Antibody to KLF2 - References

1. Tumour Biol. 2015 Apr;36(4):3075-84. ; 2. Cell Physiol Biochem. 2013;32(4):931-41.;