

Mouse Monoclonal Antibody to SUZ12
Purified Mouse Monoclonal Antibody
Catalog # AO2380a

Specification

Mouse Monoclonal Antibody to SUZ12 - Product Information

Application	E, WB, FC
Primary Accession	Q15022
Reactivity	Human
Host	Mouse
Clonality	Monoclonal
Isotype	Mouse IgG1
Calculated MW	83kDa kDa

Description

This zinc finger gene has been identified at the breakpoints of a recurrent chromosomal translocation reported in endometrial stromal sarcoma. Recombination of these breakpoints results in the fusion of this gene and JAZF1. The protein encoded by this gene contains a zinc finger domain in the C terminus of the coding region.;

Immunogen

Purified recombinant fragment of human SUZ12 (AA: 1-139) expressed in E. Coli.

Formulation

Purified antibody in PBS with 0.05% sodium azide

Application Note

ELISA: 1/10000; WB: 1/500 - 1/2000; FCM: 1/200 - 1/400

Mouse Monoclonal Antibody to SUZ12 - Additional Information

Gene ID 23512

Other Names

CHET9; JAZ1

Storage

Maintain refrigerated at 2-8°C for up to 6 months. For long term storage store at -20°C in small aliquots to prevent freeze-thaw cycles.

Precautions

Mouse Monoclonal Antibody to SUZ12 is for research use only and not for use in diagnostic or therapeutic procedures.

Mouse Monoclonal Antibody to SUZ12 - Protein Information

Name SUZ12

Synonyms CHET9, JJAZ1, KIAA0160

Function

Polycomb group (PcG) protein. Component of the PRC2 complex, which methylates 'Lys-9' (H3K9me) and 'Lys-27' (H3K27me) of histone H3, leading to transcriptional repression of the affected target gene (PubMed:15225548, PubMed:15231737, PubMed:15385962, PubMed:16618801, PubMed:17344414, PubMed:18285464, PubMed:28229514, PubMed:29499137, PubMed:31959557). The PRC2 complex may also serve as a recruiting platform for DNA methyltransferases, thereby linking two epigenetic repression systems (PubMed:12351676, PubMed:12435631, PubMed:15099518, PubMed:15225548, PubMed:15385962, PubMed:15684044, PubMed:16431907, PubMed:18086877, PubMed:18285464). Genes repressed by the PRC2 complex include HOXC8, HOXA9, MYT1 and CDKN2A (PubMed:15231737, PubMed:16618801, PubMed:17200670, PubMed:31959557).

Cellular Location

Nucleus Note=Localizes to chromatin as part of the PRC2 complex

Tissue Location

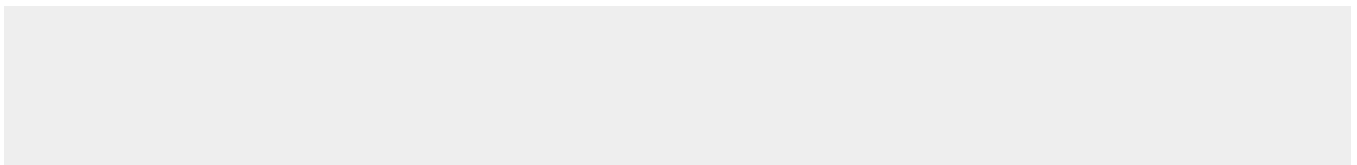
Overexpressed in breast and colon cancer.

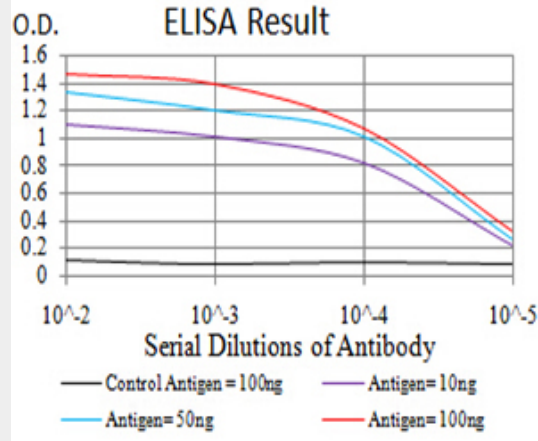
Mouse Monoclonal Antibody to SUZ12 - Protocols

Provided below are standard protocols that you may find useful for product applications.

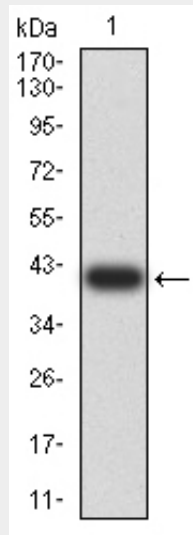
- [Western Blot](#)
- [Blocking Peptides](#)
- [Dot Blot](#)
- [Immunohistochemistry](#)
- [Immunofluorescence](#)
- [Immunoprecipitation](#)
- [Flow Cytometry](#)
- [Cell Culture](#)

Mouse Monoclonal Antibody to SUZ12 - Images

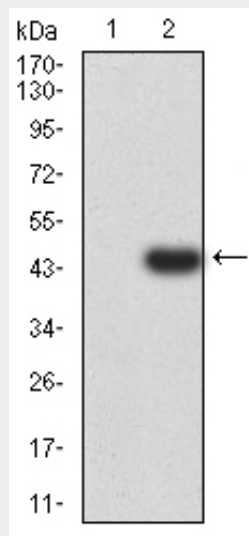




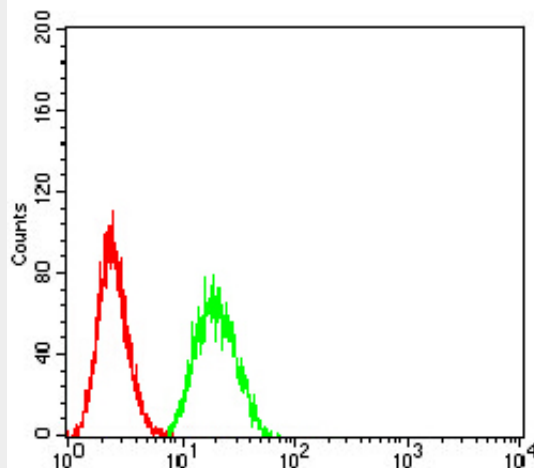
Black line: Control Antigen (100 ng); Purple line: Antigen (10ng); Blue line: Antigen (50 ng); Red line: Antigen (100 ng)



Western blot analysis using SUZ12 mAb against human SUZ12 (AA: 1-139) recombinant protein. (Expected MW is 39.9 kDa)



Western blot analysis using SUZ12 mAb against HEK293 (1) and SUZ12 (AA: 1-139)-hIgGFc transfected HEK293 (2) cell lysate.



Flow cytometric analysis of Hela cells using SUZ12 mouse mAb (green) and negative control (red).

Mouse Monoclonal Antibody to SUZ12 - References

1. Tumour Biol. 2014 Jun;35(6):6073-82. ; 2. Cell Physiol Biochem. 2013;31(6):778-84.;