

**Mouse Monoclonal Antibody to CDH11**  
**Purified Mouse Monoclonal Antibody**  
**Catalog # AO2334a****Specification**

---

**Mouse Monoclonal Antibody to CDH11 - Product Information**

Application	<b>E, WB, FC, ICC, IHC</b>
Primary Accession	<a href="#">P55287</a>
Reactivity	<b>Human</b>
Host	<b>Mouse</b>
Clonality	<b>Monoclonal</b>
Isotype	<b>Mouse IgG1</b>
Calculated MW	<b>88kDa KDa</b>

**Description**

This gene encodes a type II classical cadherin from the cadherin superfamily, integral membrane proteins that mediate calcium-dependent cell-cell adhesion. Mature cadherin proteins are composed of a large N-terminal extracellular domain, a single membrane-spanning domain, and a small, highly conserved C-terminal cytoplasmic domain. Type II (atypical) cadherins are defined based on their lack of a HAV cell adhesion recognition sequence specific to type I cadherins. Expression of this particular cadherin in osteoblastic cell lines, and its upregulation during differentiation, suggests a specific function in bone development and maintenance. ;

**Immunogen**

Purified recombinant fragment of human CDH11 (AA: 468-617) expressed in E. Coli.

**Formulation**

Purified antibody in PBS with 0.05% sodium azide

**Application Note**

ELISA: 1/10000; WB: 1/500 - 1/2000; IHC: 1/200 - 1/1000; ICC: 1/200 - 1/1000; FCM: 1/200 - 1/400

**Mouse Monoclonal Antibody to CDH11 - Additional Information**

**Gene ID** 1009

**Other Names**

OB; CAD11; CDHOB; OSF-4

**Storage**

Maintain refrigerated at 2-8°C for up to 6 months. For long term storage store at -20°C in small aliquots to prevent freeze-thaw cycles.

**Precautions**

Mouse Monoclonal Antibody to CDH11 is for research use only and not for use in diagnostic or therapeutic procedures.

**Mouse Monoclonal Antibody to CDH11 - Protein Information**

## Name CDH11

### Function

Cadherins are calcium-dependent cell adhesion proteins. They preferentially interact with themselves in a homophilic manner in connecting cells; cadherins may thus contribute to the sorting of heterogeneous cell types. Required for proper focal adhesion assembly (PubMed:<a href="http://www.uniprot.org/citations/33811546" target="\_blank">33811546</a>). Involved in the regulation of cell migration (PubMed:<a href="http://www.uniprot.org/citations/33811546" target="\_blank">33811546</a>).

### Cellular Location

Cell membrane; Single-pass type I membrane protein

### Tissue Location

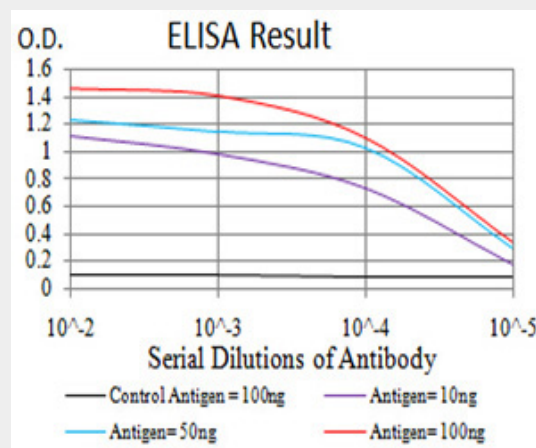
Expressed mainly in brain but also found in other tissues. Expressed in neuroblasts. In the embryo from 67 to 72 days of gestation, detected at high levels in facial mesenchyme including the central palatal mesenchyme, dental mesenchyme, the eye and optic muscle, and the tongue (at protein level) (PubMed:33811546)

## Mouse Monoclonal Antibody to CDH11 - Protocols

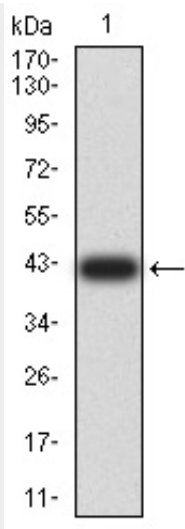
Provided below are standard protocols that you may find useful for product applications.

- [Western Blot](#)
- [Blocking Peptides](#)
- [Dot Blot](#)
- [Immunohistochemistry](#)
- [Immunofluorescence](#)
- [Immunoprecipitation](#)
- [Flow Cytometry](#)
- [Cell Culture](#)

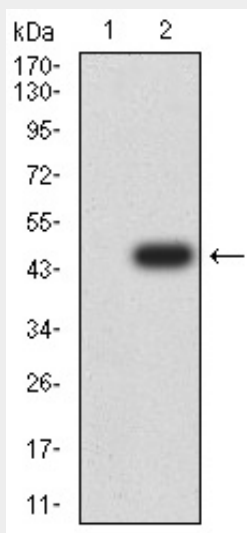
## Mouse Monoclonal Antibody to CDH11 - Images



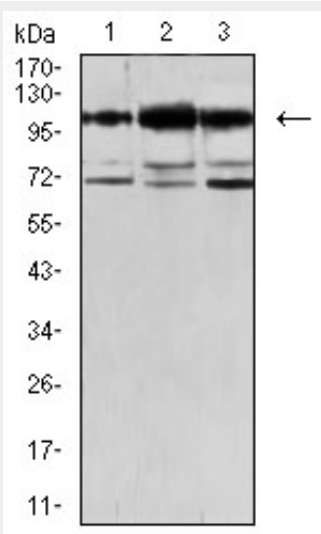
Black line: Control Antigen (100 ng);Purple line: Antigen (10ng); Blue line: Antigen (50 ng); Red line:Antigen (100 ng)



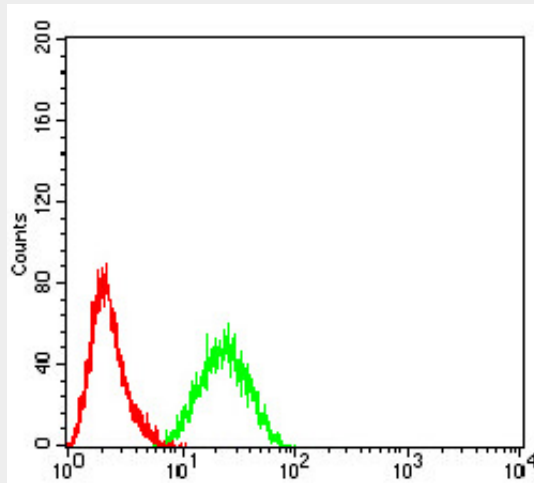
Western blot analysis using CDH11 mAb against human CDH11 (AA: 468-617) recombinant protein. (Expected MW is 42.1 kDa)



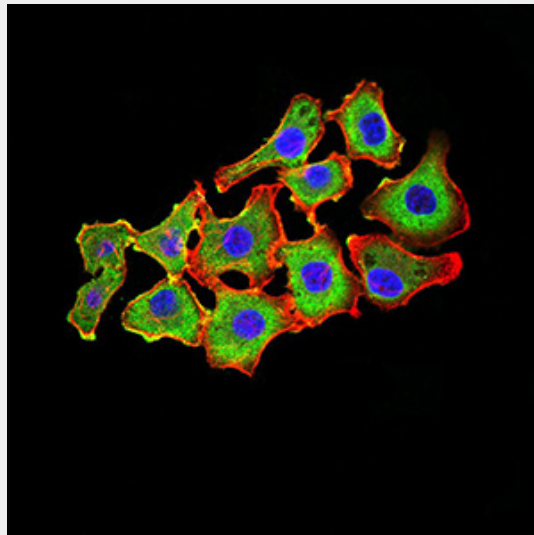
Western blot analysis using CDH11 mAb against HEK293 (1) and CDH11 (AA: 468-617)-hIgGFc transfected HEK293 (2) cell lysate.



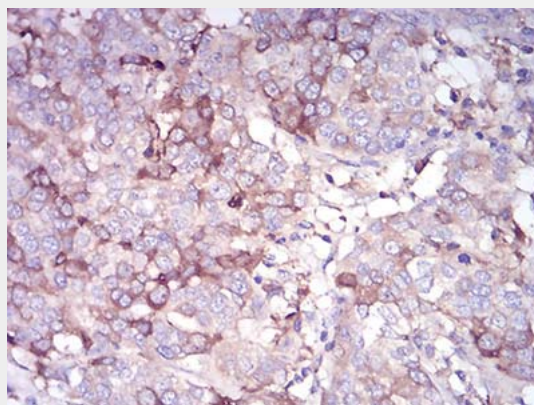
Western blot analysis using CDH11 mouse mAb against MCF-7 (1), Jurkat (2), and HEK293 (3) cell lysate.



Flow cytometric analysis of Hela cells using CDH11 mouse mAb (green) and negative control (red).



Immunofluorescence analysis of HL-7702 cells using CDH11 mouse mAb (green). Blue: DRAQ5 fluorescent DNA dye. Red: Actin filaments have been labeled with Alexa Fluor- 555 phalloidin. Secondary antibody from Fisher



Immunohistochemical analysis of paraffin-embedded bladder cancer tissues using CDH11 mouse

mAb with DAB staining.

### **Mouse Monoclonal Antibody to CDH11 - References**

1.Arthritis Rheumatol. 2014 Apr;66(4):1010-21. ; 2.Mol Cancer Res. 2012 Mar;10(3):293-304. ;