

PAX3 Antibody
Purified Mouse Monoclonal Antibody
Catalog # AO2313a

Specification

PAX3 Antibody - Product Information

Application	E, WB, FC
Primary Accession	P23760
Reactivity	Human, Mouse
Host	Mouse
Clonality	Monoclonal
Isotype	IgG1
Calculated MW	56.8kDa KDa

Description

There are at least four distinct but related alkaline phosphatases: intestinal, placental, placental-like, and liver/bone/kidney (tissue non-specific). The intestinal alkaline phosphatase gene encodes a digestive brush-border enzyme. This enzyme is upregulated during small intestinal epithelial cell differentiation.

Immunogen

Purified recombinant fragment of human ALPI (AA: 397-458) expressed in E. Coli.

Formulation

Purified antibody in PBS with 0.05% sodium azide

PAX3 Antibody - Additional Information

Gene ID 5077

Other Names

Paired box protein Pax-3, HuP2, PAX3, HUP2

Dilution

E~~1/10000
WB~~1/500 - 1/2000
FC~~1/200 - 1/400

Storage

Maintain refrigerated at 2-8°C for up to 6 months. For long term storage store at -20°C in small aliquots to prevent freeze-thaw cycles.

Precautions

PAX3 Antibody is for research use only and not for use in diagnostic or therapeutic procedures.

PAX3 Antibody - Protein Information

Name PAX3

Synonyms HUP2

Function

Transcription factor that may regulate cell proliferation, migration and apoptosis. Involved in neural development and myogenesis. Transcriptional activator of MITF, acting synergistically with SOX10 (PubMed:21965087).

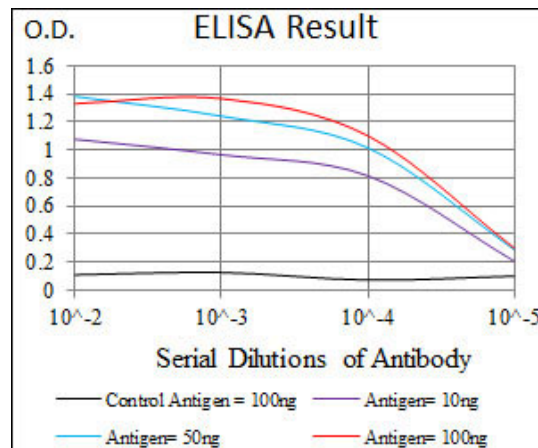
Cellular Location

Nucleus.

PAX3 Antibody - Protocols

Provided below are standard protocols that you may find useful for product applications.

- [Western Blot](#)
- [Blocking Peptides](#)
- [Dot Blot](#)
- [Immunohistochemistry](#)
- [Immunofluorescence](#)
- [Immunoprecipitation](#)
- [Flow Cytometry](#)
- [Cell Culture](#)



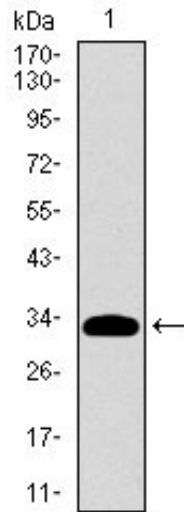


Figure 1: Western blot analysis using ALPI mAb against human ALPI recombinant protein. (Expected MW is 31.9 kDa)

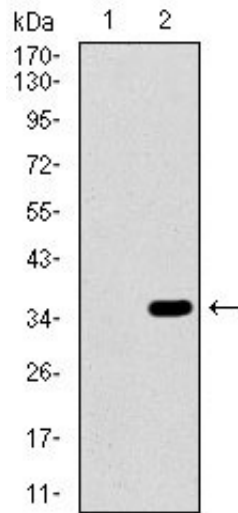


Figure 2: Western blot analysis using ALPI mAb against HEK293 (1) and ALPI (AA: 397-458)-hIgGfc transfected HEK293 (2) cell lysate.

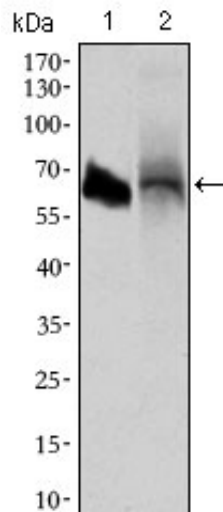


Figure 3: Western blot analysis using ALPI mouse mAb against HL60 (1) and HepG2 (2) cell lysate.

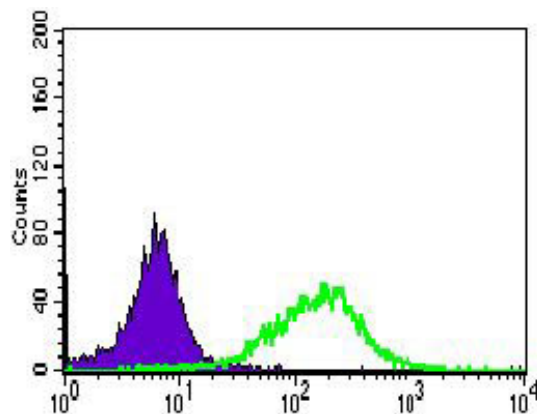


Figure 5: Flow cytometric analysis of HepG2 cells using ALPI mouse mAb (green) and negative control (purple).

PAX3 Antibody - References

1. Virchows Arch. 2012 Feb;460(2):157-61.
2. World J Gastroenterol. 2012 Jul 7;18(25):3254-9.