

ALPI Antibody
Purified Mouse Monoclonal Antibody
Catalog # AO2312a

Specification

ALPI Antibody - Product Information

Application	E, WB, FC
Primary Accession	P09923
Reactivity	Human
Host	Mouse
Clonality	Monoclonal
Isotype	IgG1
Calculated MW	56.8kDa KDa

Description

There are at least four distinct but related alkaline phosphatases: intestinal, placental, placental-like, and liver/bone/kidney (tissue non-specific). The intestinal alkaline phosphatase gene encodes a digestive brush-border enzyme. This enzyme is upregulated during small intestinal epithelial cell differentiation.

Immunogen

Purified recombinant fragment of human ALPI (AA: 397-458) expressed in E. Coli.

Formulation

Ascitic fluid containing 0.03% sodium azide.

ALPI Antibody - Additional Information

Gene ID 248

Other Names

Intestinal-type alkaline phosphatase, IAP, Intestinal alkaline phosphatase, 3.1.3.1, ALPI

Dilution

E~~1/10000
WB~~1/500 - 1/2000
FC~~1/200 - 1/400

Storage

Maintain refrigerated at 2-8°C for up to 6 months. For long term storage store at -20°C in small aliquots to prevent freeze-thaw cycles.

Precautions

ALPI Antibody is for research use only and not for use in diagnostic or therapeutic procedures.

ALPI Antibody - Protein Information

Name ALPI

Function

Alkaline phosphatase that can hydrolyze various phosphate compounds.

Cellular Location

Cell membrane {ECO:0000250|UniProtKB:P15693}; Lipid-anchor, GPI-anchor {ECO:0000250|UniProtKB:P15693}

ALPI Antibody - Protocols

Provided below are standard protocols that you may find useful for product applications.

- [Western Blot](#)
- [Blocking Peptides](#)
- [Dot Blot](#)
- [Immunohistochemistry](#)
- [Immunofluorescence](#)
- [Immunoprecipitation](#)
- [Flow Cytometry](#)
- [Cell Culture](#)

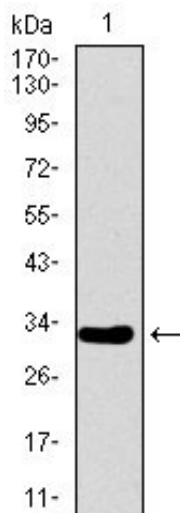
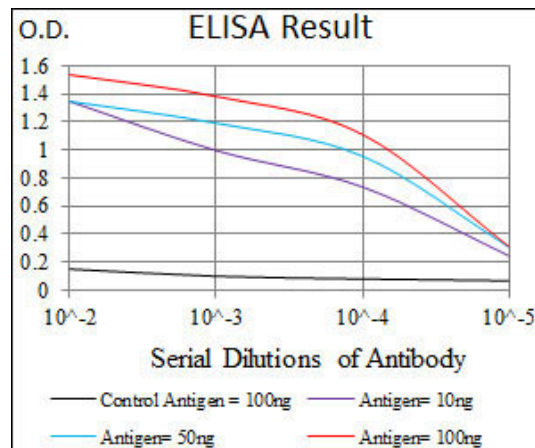


Figure 1: Western blot analysis using ALPI mAb against human ALPI recombinant protein. (Expected MW is 31.9 kDa)

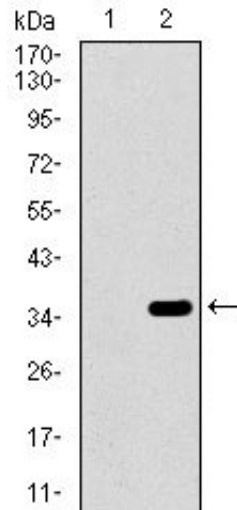


Figure 2: Western blot analysis using ALPI mAb against HEK293 (1) and ALPI (AA: 397-458)-hIgGFc transfected HEK293 (2) cell lysate.

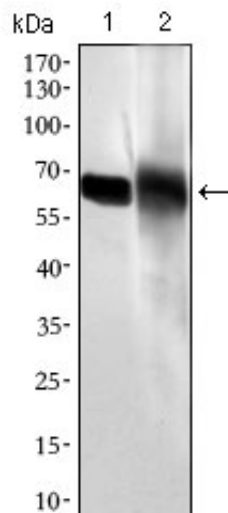


Figure 3: Western blot analysis using ALPI mouse mAb against HL60 (1) and HepG2 (2) cell lysate.

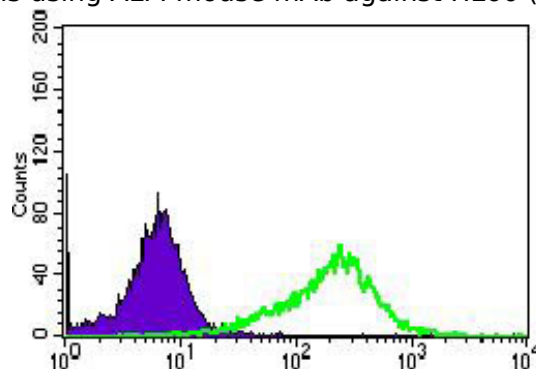


Figure 5: Flow cytometric analysis of HepG2 cells using ALPI mouse mAb (green) and negative control (purple).

ALPI Antibody - References

1. Virchows Arch. 2012 Feb;460(2):157-61.
2. World J Gastroenterol. 2012 Jul 7;18(25):3254-9.