

**TRAFD1 Antibody**  
**Purified Mouse Monoclonal Antibody**  
**Catalog # AO2272a****Specification****TRAFD1 Antibody - Product Information**

Application	<b>E, WB, FC</b>
Primary Accession	<a href="#">O14545</a>
Reactivity	<b>Human</b>
Host	<b>Mouse</b>
Clonality	<b>Monoclonal</b>
Isotype	<b>IgG1</b>
Calculated MW	<b>64.8kDa KDa</b>

**Description**

The innate immune system confers host defense against viral and microbial infection, and TRAFD1 is a negative feedback regulator that controls excessive immune responses

**Immunogen**

Purified recombinant fragment of human TRAFD1 (AA: 401-582) expressed in E. Coli.

**Formulation**

Ascitic fluid containing 0.03% sodium azide.

**TRAFD1 Antibody - Additional Information**

**Gene ID** 10906

**Other Names**

TRAF-type zinc finger domain-containing protein 1, Protein FLN29, TRAFD1, FLN29

**Dilution**

E~~1/10000  
WB~~1/500 - 1/2000  
FC~~1/200 - 1/400

**Storage**

Maintain refrigerated at 2-8°C for up to 6 months. For long term storage store at -20°C in small aliquots to prevent freeze-thaw cycles.

**Precautions**

TRAFD1 Antibody is for research use only and not for use in diagnostic or therapeutic procedures.

**TRAFD1 Antibody - Protein Information**

**Name** TRAFD1

**Synonyms** FLN29

**Function**

Negative feedback regulator that controls excessive innate immune responses. Regulates both Toll-like receptor 4 (TLR4) and DDX58/RIG1-like helicases (RLH) pathways. May inhibit the LTR pathway by direct interaction with TRAF6 and attenuation of NF-kappa-B activation. May negatively regulate the RLH pathway downstream from MAVS and upstream of NF-kappa-B and IRF3 (By similarity).

**TRAFD1 Antibody - Protocols**

Provided below are standard protocols that you may find useful for product applications.

- [Western Blot](#)
- [Blocking Peptides](#)
- [Dot Blot](#)
- [Immunohistochemistry](#)
- [Immunofluorescence](#)
- [Immunoprecipitation](#)
- [Flow Cytometry](#)
- [Cell Culture](#)

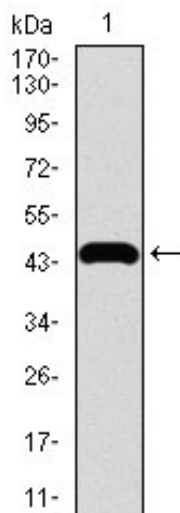


Figure 1: Western blot analysis using TRAFD1 mAb against human TRAFD1 recombinant protein. (Expected MW is 45 kDa)

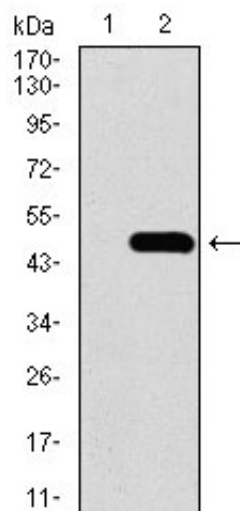


Figure 2: Western blot analysis using TRAFD1 mAb against HEK293 (1) and TRAFD1 (AA: 401-582)-hlgGfc transfected HEK293 (2) cell lysate.

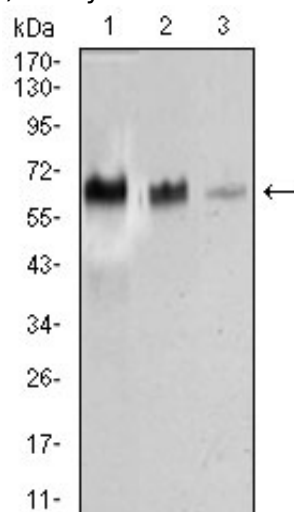


Figure 3: Western blot analysis using TRAFD1 mouse mAb against HEK293 (1), Raji (2), and Jurkat (3) cell lysate.

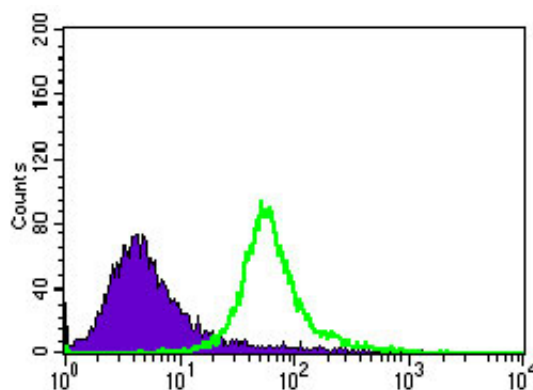


Figure 4: Flow cytometric analysis of HeLa cells using TRAFD1 mouse mAb (green) and negative control (purple).

#### TRAFD1 Antibody - References

1. J Biol Chem. 2008 Dec 5;283(49):33858-64. 2. J Biol Chem. 2005 Dec 16;280(50):41289-97.

