

**GNL3 Antibody**  
**Purified Mouse Monoclonal Antibody**  
**Catalog # AO2268a**

**Specification**

**GNL3 Antibody - Product Information**

Application	<b>E, WB</b>
Primary Accession	<a href="#">O9BVP2</a>
Reactivity	<b>Human</b>
Host	<b>Mouse</b>
Clonality	<b>Monoclonal</b>
Isotype	<b>IgG1</b>
Calculated MW	<b>62kDa KDa</b>

**Description**

The protein encoded by this gene may interact with p53 and may be involved in tumorigenesis. The encoded protein also appears to be important for stem cell proliferation. This protein is found in both the nucleus and nucleolus. Three transcript variants encoding two different isoforms have been found for this gene.

**Immunogen**

Purified recombinant fragment of human GNL3 (AA: 1-226) expressed in E. Coli.

**Formulation**

Ascitic fluid containing 0.03% sodium azide.

**GNL3 Antibody - Additional Information**

**Gene ID** 26354

**Other Names**

Guanine nucleotide-binding protein-like 3, E2-induced gene 3 protein, Novel nucleolar protein 47, NNP47, Nucleolar GTP-binding protein 3, Nucleostemin, GNL3, E2IG3, NS

**Dilution**

E~~1/10000

WB~~1/500 - 1/2000

**Storage**

Maintain refrigerated at 2-8°C for up to 6 months. For long term storage store at -20°C in small aliquots to prevent freeze-thaw cycles.

**Precautions**

GNL3 Antibody is for research use only and not for use in diagnostic or therapeutic procedures.

**GNL3 Antibody - Protein Information**

**Name** GNL3

## Synonyms E2IG3, NS

### Function

May be required to maintain the proliferative capacity of stem cells. Stabilizes MDM2 by preventing its ubiquitination, and hence proteasomal degradation (By similarity).

### Cellular Location

Nucleus {ECO:0000250|UniProtKB:Q811S9}. Nucleus, nucleolus. Note=Shuttles between the nucleus and nucleolus. {ECO:0000250|UniProtKB:Q811S9}

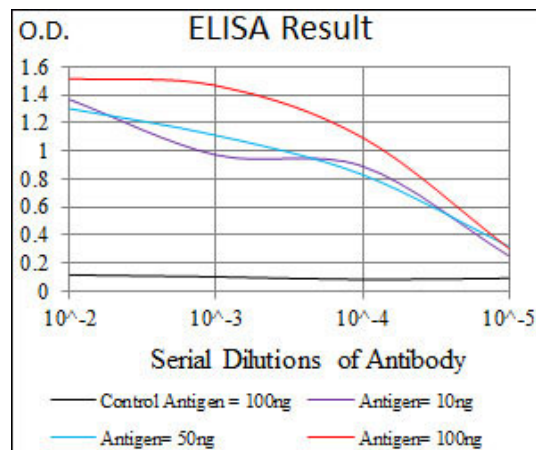
### Tissue Location

Increased levels in lung tissue in cancer patients.

## GNL3 Antibody - Protocols

Provided below are standard protocols that you may find useful for product applications.

- [Western Blot](#)
- [Blocking Peptides](#)
- [Dot Blot](#)
- [Immunohistochemistry](#)
- [Immunofluorescence](#)
- [Immunoprecipitation](#)
- [Flow Cytometry](#)
- [Cell Culture](#)



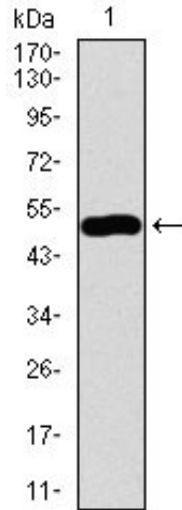


Figure 1: Western blot analysis using GNL3 mAb against human GNL3 recombinant protein. (Expected MW is 51.9 kDa)

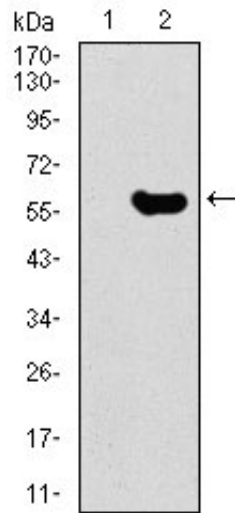


Figure 2: Western blot analysis using GNL3 mAb against HEK293 (1) and GNL3 (AA: 1-226)-hIgGFc transfected HEK293 (2) cell lysate.

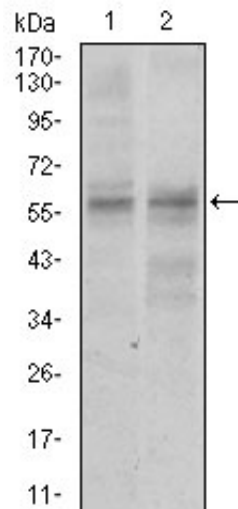


Figure 3: Western blot analysis using GNL3 mouse mAb against NIH3T3 (1) and PC-3 (2) cell lysate.

**GNL3 Antibody - References**

1.Oncogene. 2011 Apr 7;30(14):1716-26. 2.J Cell Biol. 2009 Jun 1;185(5):827-39.