

**CHGA Antibody**  
**Purified Mouse Monoclonal Antibody**  
**Catalog # AO2256a**

**Specification**

**CHGA Antibody - Product Information**

Application	<b>E, WB, IF, FC</b>
Primary Accession	<a href="#">P10645</a>
Reactivity	<b>Human</b>
Host	<b>Mouse</b>
Clonality	<b>Monoclonal</b>
Isotype	<b>IgG1</b>
Calculated MW	<b>50.7kDa KDa</b>

**Description**

The protein encoded by this gene is a member of the chromogranin/secretogranin family of neuroendocrine secretory proteins. It is found in secretory vesicles of neurons and endocrine cells. This gene product is a precursor to three biologically active peptides; vasostatin, pancreastatin, and parastatin. These peptides act as autocrine or paracrine negative modulators of the neuroendocrine system. Other peptides, including chromostatin, beta-granin, WE-14 and GE-25, are also derived from the full-length protein. However, biological activities for these molecules have not been shown.

**Immunogen**

Purified recombinant fragment of human CHGA (AA: 87-252 ) expressed in E. Coli.

**Formulation**

Ascitic fluid containing 0.03% sodium azide.

**CHGA Antibody - Additional Information**

**Gene ID** 1113

**Other Names**

Chromogranin-A, CgA, Pituitary secretory protein I, SP-I, Vasostatin-1, Vasostatin I, Vasostatin-2, Vasostatin II, EA-92, ES-43, Pancreastatin, SS-18, WA-8, WE-14, LF-19, AL-11, GV-19, GR-44, ER-37, CHGA

**Dilution**

E~~1/10000  
WB~~1/500 - 1/2000  
IF~~1/50  
FC~~1/200 - 1/400

**Storage**

Maintain refrigerated at 2-8°C for up to 6 months. For long term storage store at -20°C in small aliquots to prevent freeze-thaw cycles.

**Precautions**

CHGA Antibody is for research use only and not for use in diagnostic or therapeutic procedures.

## CHGA Antibody - Protein Information

**Name** CHGA

### Function

[Pancreastatin]: Strongly inhibits glucose induced insulin release from the pancreas. [Serpinin]: Regulates granule biogenesis in endocrine cells by up-regulating the transcription of protease nexin 1 (SERPINE2) via a cAMP-PKA-SP1 pathway. This leads to inhibition of granule protein degradation in the Golgi complex which in turn promotes granule formation.

### Cellular Location

[Serpinin]: Secreted {ECO:0000250|UniProtKB:P26339}. Cytoplasmic vesicle, secretory vesicle {ECO:0000250|UniProtKB:P26339}. Note=Pyroglutaminated serpinin localizes to secretory vesicle. {ECO:0000250|UniProtKB:P26339}

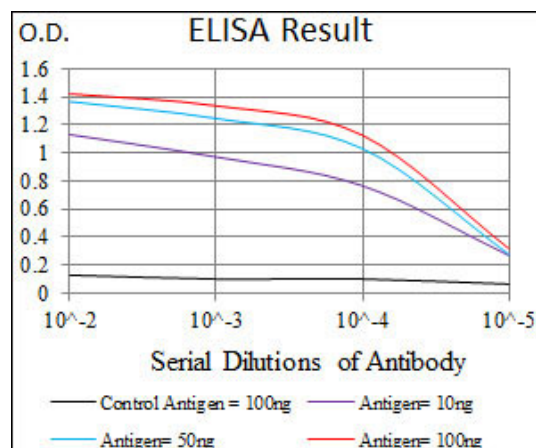
### Tissue Location

Detected in cerebrospinal fluid (at protein level) (PubMed:25326458). Detected in urine (at protein level) (PubMed:37453717).

## CHGA Antibody - Protocols

Provided below are standard protocols that you may find useful for product applications.

- [Western Blot](#)
- [Blocking Peptides](#)
- [Dot Blot](#)
- [Immunohistochemistry](#)
- [Immunofluorescence](#)
- [Immunoprecipitation](#)
- [Flow Cytometry](#)
- [Cell Culture](#)



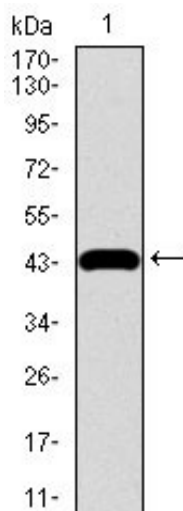


Figure 1: Western blot analysis using CHGA mAb against human CHGA recombinant protein. (Expected MW is 43.6 kDa)

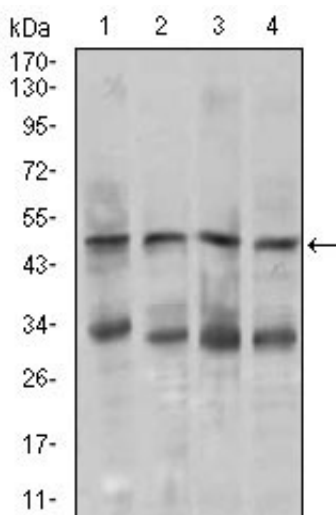


Figure 2: Western blot analysis using CHGA mouse mAb against MOLT4 (1), SK-N-SH (2), HepG2 (3), and PC-12 (4) cell lysate.

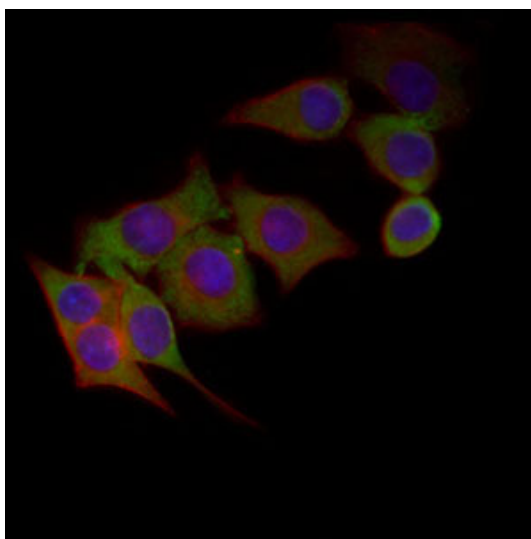


Figure 3: Immunofluorescence analysis of HepG2 cells using CHGA mouse mAb (green). Blue: DRAQ5 fluorescent DNA dye. Red: Actin filaments have been labeled with Alexa Fluor-555 phalloidin.

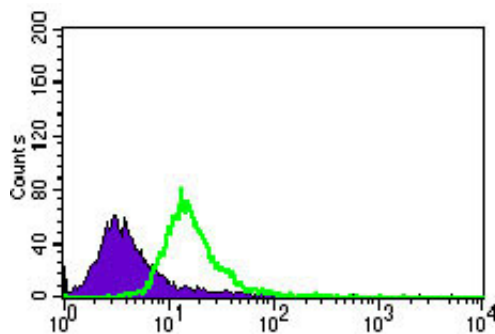


Figure 4: Flow cytometric analysis of HeLa cells using CHGA mouse mAb (green) and negative control (purple).

#### CHGA Antibody - References

1. Cell Signal. 2012 Jan;24(1):233-46.
2. J Endocrinol Invest. 2010 Mar;33(3):186-91.