

**CGA Antibody**  
**Purified Mouse Monoclonal Antibody**  
**Catalog # AO1977a**

**Specification**

**CGA Antibody - Product Information**

Application	<b>E, WB</b>
Primary Accession	<a href="#">P01215</a>
Reactivity	<b>Human</b>
Host	<b>Mouse</b>
Clonality	<b>Monoclonal</b>
Isotype	<b>IgG1</b>
Calculated MW	<b>13kDa KDa</b>

**Description**

The four human glycoprotein hormones chorionic gonadotropin (CG), luteinizing hormone (LH), follicle stimulating hormone (FSH), and thyroid stimulating hormone (TSH) are dimers consisting of alpha and beta subunits that are associated noncovalently. The alpha subunits of these hormones are identical, however, their beta chains are unique and confer biological specificity. The protein encoded by this gene is the alpha subunit and belongs to the glycoprotein hormones alpha chain family. Two transcript variants encoding different isoforms have been found for this gene.

**Immunogen**

Purified recombinant fragment of human CGA (AA: 25-147) expressed in E. Coli.

**Formulation**

Purified antibody in PBS with 0.05% sodium azide.

**CGA Antibody - Additional Information**

**Gene ID** 1081

**Other Names**

Glycoprotein hormones alpha chain, Anterior pituitary glycoprotein hormones common subunit alpha, Choriogonadotropin alpha chain, Chorionic gonadotrophin subunit alpha, CG-alpha, Follicle-stimulating hormone alpha chain, FSH-alpha, Follitropin alpha chain, Luteinizing hormone alpha chain, LSH-alpha, Lutropin alpha chain, Thyroid-stimulating hormone alpha chain, TSH-alpha, Thyrotropin alpha chain, CGA

**Dilution**

E~~1/10000

WB~~1/500 - 1/2000

**Storage**

Maintain refrigerated at 2-8°C for up to 6 months. For long term storage store at -20°C in small aliquots to prevent freeze-thaw cycles.

**Precautions**

CGA Antibody is for research use only and not for use in diagnostic or therapeutic procedures.

## CGA Antibody - Protein Information

**Name** CGA

### Function

Shared alpha chain of the active heterodimeric glycoprotein hormones thyrotropin/thyroid stimulating hormone/TSH, lutropin/luteinizing hormone/LH, follitropin/follicle stimulating hormone/FSH and choriogonadotropin/CG. These hormones bind specific receptors on target cells that in turn activate downstream signaling pathways.

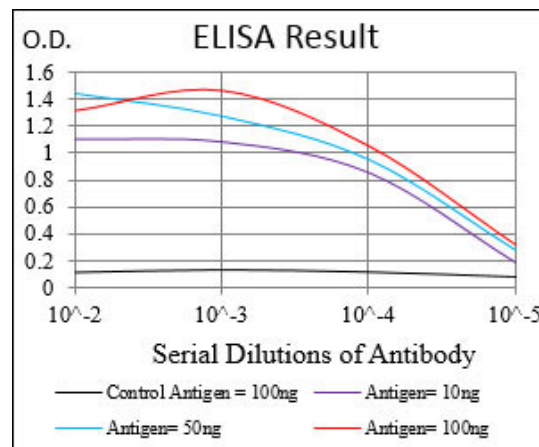
### Cellular Location

Secreted

## CGA Antibody - Protocols

Provided below are standard protocols that you may find useful for product applications.

- [Western Blot](#)
- [Blocking Peptides](#)
- [Dot Blot](#)
- [Immunohistochemistry](#)
- [Immunofluorescence](#)
- [Immunoprecipitation](#)
- [Flow Cytometry](#)
- [Cell Culture](#)



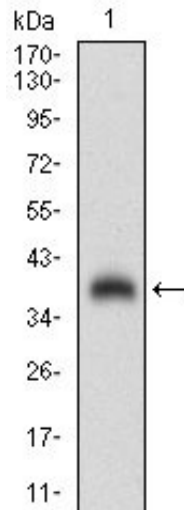


Figure 1: Western blot analysis using CGA mAb against human CGA (AA: 25-147) recombinant protein. (Expected MW is 39.4 kDa)

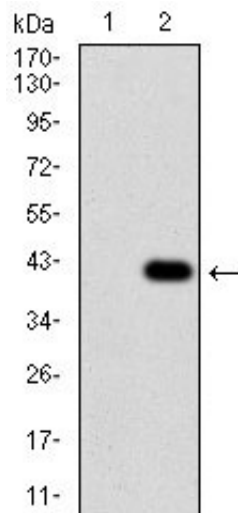


Figure 2: Western blot analysis using CGA mAb against HEK293 (1) and CGA (AA: 25-147)-hIgGFc transfected HEK293 (2) cell lysate.

### CGA Antibody - Background

DNAL4 is a component of the dynein motor complex

### CGA Antibody - References

1. *Reprod Biol Endocrinol.* 2011 Aug 12;9:114.
2. *Hum Reprod.* 2006 Mar;21(3):823-8.