

CSNK2B Antibody
Purified Mouse Monoclonal Antibody
Catalog # AO1961a

Specification

CSNK2B Antibody - Product Information

Application	E, WB, IF, FC, IHC
Primary Accession	P67870
Reactivity	Human
Host	Mouse
Clonality	Monoclonal
Isotype	IgG1
Calculated MW	25kDa KDa

Description

This gene encodes the beta subunit of casein kinase II, a ubiquitous protein kinase which regulates metabolic pathways, signal transduction, transcription, translation, and replication. The enzyme is composed of three subunits, alpha, alpha prime and beta, which form a tetrameric holoenzyme. The alpha and alpha prime subunits are catalytic, while the beta subunit serves regulatory functions. The enzyme localizes to the endoplasmic reticulum and the Golgi apparatus. Two transcript variants encoding different isoforms have been found for this gene.

Immunogen

Purified recombinant fragment of human CSNK2B (AA: FULL(1-215)) expressed in E. Coli.

Formulation

Purified antibody in PBS with 0.05% sodium azide.

CSNK2B Antibody - Additional Information

Gene ID 1460

Other Names

Casein kinase II subunit beta, CK II beta, Phosvitin, Protein G5a, CSNK2B, CK2N, G5A

Dilution

E~~1/10000
WB~~1/500 - 1/2000
IF~~1/200 - 1/1000
FC~~1/200 - 1/400
IHC~~1/200 - 1/1000

Storage

Maintain refrigerated at 2-8°C for up to 6 months. For long term storage store at -20°C in small aliquots to prevent freeze-thaw cycles.

Precautions

CSNK2B Antibody is for research use only and not for use in diagnostic or therapeutic procedures.

CSNK2B Antibody - Protein Information

Name CSNK2B ([HGNC:2460](#))

Synonyms CK2N, G5A

Function

Regulatory subunit of casein kinase II/CK2. As part of the kinase complex regulates the basal catalytic activity of the alpha subunit a constitutively active serine/threonine-protein kinase that phosphorylates a large number of substrates containing acidic residues C-terminal to the phosphorylated serine or threonine (PubMed: [11239457](http://www.uniprot.org/citations/11239457), PubMed: [16818610](http://www.uniprot.org/citations/16818610)). Participates in Wnt signaling (By similarity).

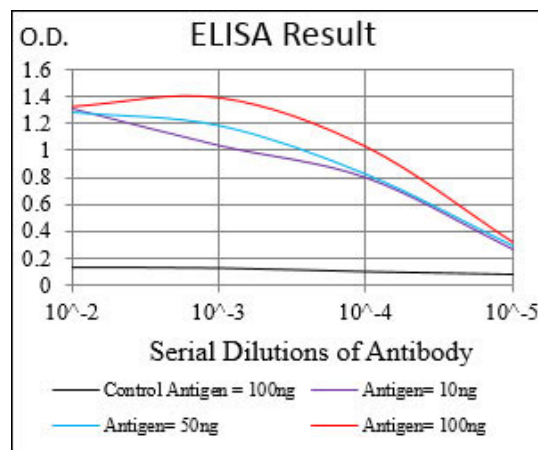
Cellular Location

Nucleus.

CSNK2B Antibody - Protocols

Provided below are standard protocols that you may find useful for product applications.

- [Western Blot](#)
- [Blocking Peptides](#)
- [Dot Blot](#)
- [Immunohistochemistry](#)
- [Immunofluorescence](#)
- [Immunoprecipitation](#)
- [Flow Cytometry](#)
- [Cell Culture](#)



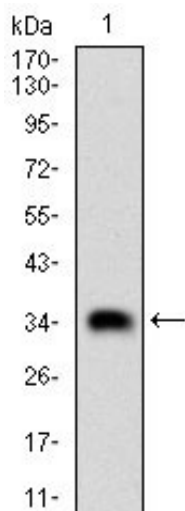


Figure 1: Western blot analysis using CSNK2B mAb against human CSNK2B (AA: FULL(1-215)) recombinant protein. (Expected MW is 35 kDa)

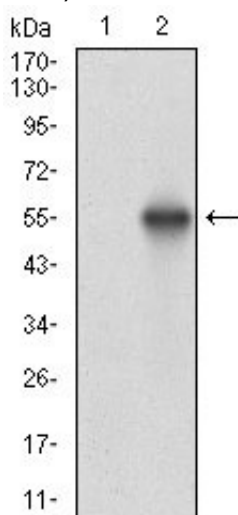


Figure 2: Western blot analysis using CSNK2B mAb against HEK293 (1) and CSNK2B (AA: FULL(1-215))-hlgGfc transfected HEK293 (2) cell lysate.

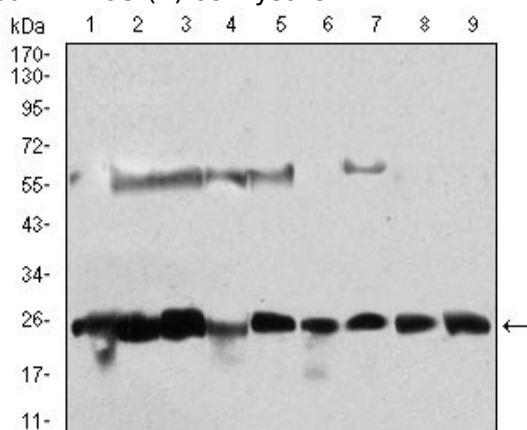


Figure 3: Western blot analysis using CSNK2B mouse mAb against HeLa (1), Jurkat (2), K562 (3), HepG2 (4), C6 (5), SK-N-SH (6), NTERA-2 (7), MCF-7 (8), NIH/3T3 (9) cell lysate.

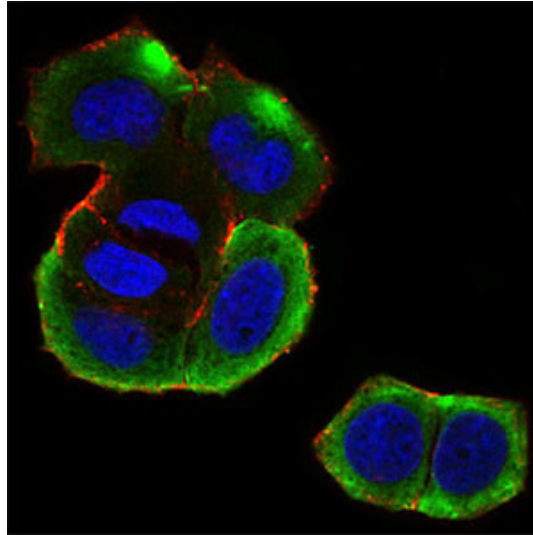


Figure 4: Immunofluorescence analysis of MCF-7 cells using CSNK2B mouse mAb (green). Blue: DRAQ5 fluorescent DNA dye. Red: Actin filaments have been labeled with Alexa Fluor-555 phalloidin. Secondary antibody from Fisher (Cat#: 35503)

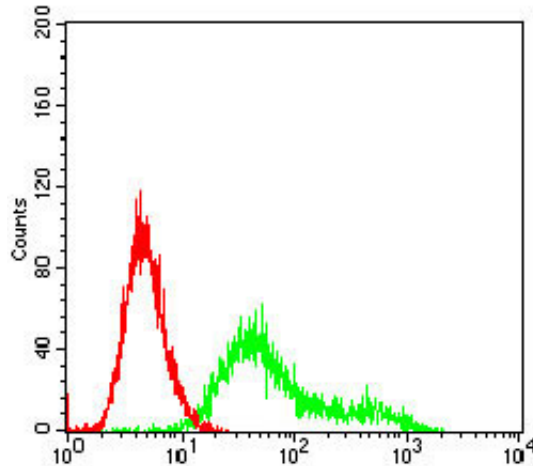


Figure 5: Flow cytometric analysis of Hela cells using CSNK2B mouse mAb (green) and negative control (red).

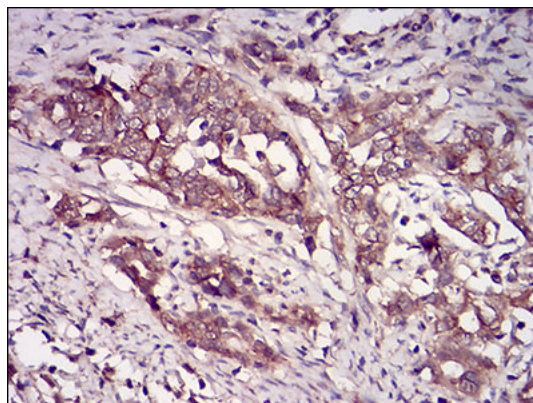


Figure 6: Immunohistochemical analysis of paraffin-embedded cervical cancer tissues using CSNK2B mouse mAb with DAB staining.

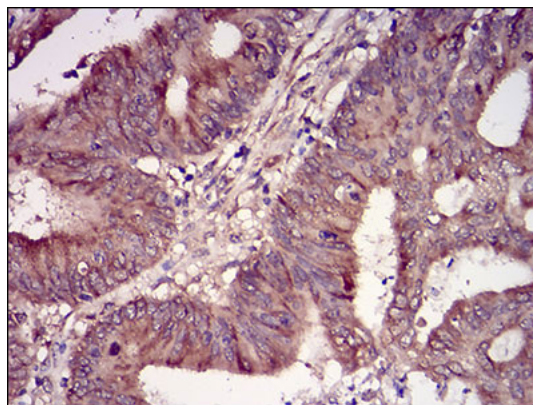


Figure 7: Immunohistochemical analysis of paraffin-embedded colon cancer tissues using CSNK2B mouse mAb with DAB staining.

CSNK2B Antibody - Background

PIWIL4 belongs to the Argonaute family of proteins, which function in development and maintenance of germline stem cells ; ; ;

CSNK2B Antibody - References

1. Nan Fang Yi Ke Da Xue Xue Bao. 2012 Oct;32(10):1491-4.2. Am J Pathol. 2009 Jan;174(1):287-96.