

Bpifa2 Antibody
Purified Mouse Monoclonal Antibody
Catalog # AO1908a

Specification

Bpifa2 Antibody - Product Information

Application	E, WB, FC, IHC
Primary Accession	P07743
Reactivity	Human
Host	Mouse
Clonality	Monoclonal
Isotype	IgG1
Calculated MW	24.8kDa KDa

Description

Bpifa2 has strong antibacterial activity against *P. aeruginosa*.

Immunogen

Purified recombinant fragment of mouse mSplunc2 (AA: 16-169) expressed in *E. Coli*.

Formulation

Purified antibody in PBS with 0.05% sodium azide.

Bpifa2 Antibody - Additional Information

Gene ID 19194

Other Names

BPI fold-containing family A member 2, Parotid secretory protein, PSP, Bpifa2, Psp

Dilution

E~~1/10000
WB~~1/500 - 1/2000
FC~~1/200 - 1/400
IHC~~1/200 - 1/1000

Storage

Maintain refrigerated at 2-8°C for up to 6 months. For long term storage store at -20°C in small aliquots to prevent freeze-thaw cycles.

Precautions

Bpifa2 Antibody is for research use only and not for use in diagnostic or therapeutic procedures.

Bpifa2 Antibody - Protein Information

Name Bpifa2

Synonyms Psp

Function

Has strong antibacterial activity against *P. aeruginosa*.

Cellular Location

Secreted.

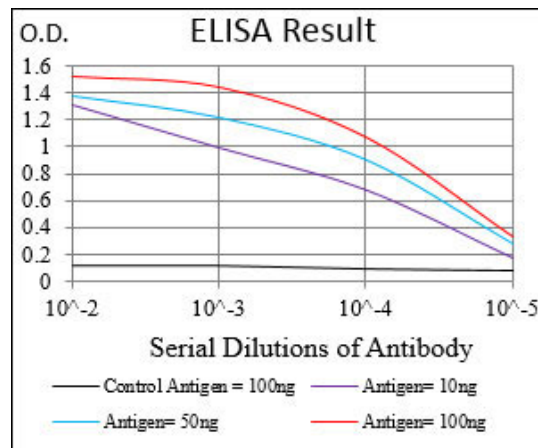
Tissue Location

Predominates in the parotid glands, present in smaller amounts (1/10) in the submaxillary glands and in the sublingual glands, and at lower amount in the pancreas but undetectable in the liver. Found also in lacrimal gland.

Bpifa2 Antibody - Protocols

Provided below are standard protocols that you may find useful for product applications.

- [Western Blot](#)
- [Blocking Peptides](#)
- [Dot Blot](#)
- [Immunohistochemistry](#)
- [Immunofluorescence](#)
- [Immunoprecipitation](#)
- [Flow Cytometry](#)
- [Cell Culture](#)



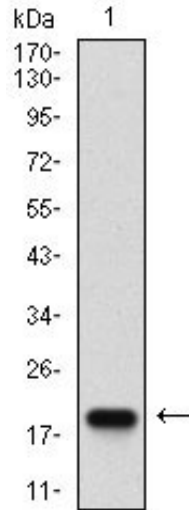


Figure 1: Western blot analysis using mSplunc2 mAb against human mSplunc2 (AA:) recombinant protein. (Expected MW is 18.5 kDa)

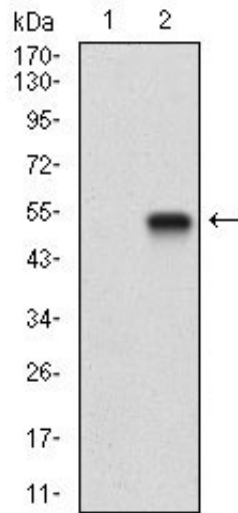


Figure 2: Western blot analysis using mSplunc2 mAb against HEK293 (1) and mSplunc2 -hlgGfC transfected HEK293 (2) cell lysate.

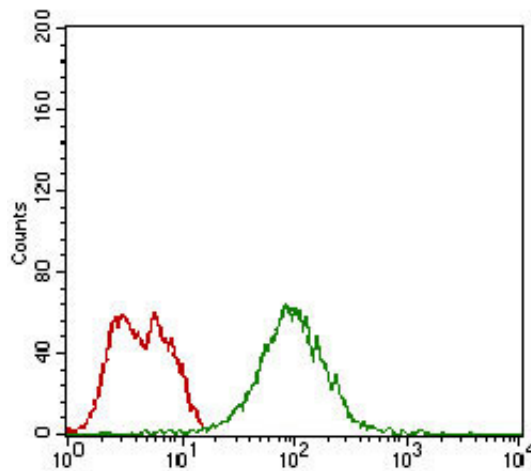


Figure 3: Flow cytometric analysis of MCF-7 cells using mSplunc2 mouse mAb (green) and negative control (red).

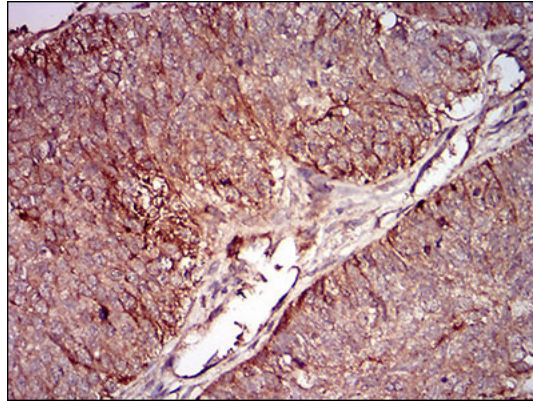


Figure 4: Immunohistochemical analysis of paraffin-embedded ovarian cancer tissues using mSplunc2 mouse mAb with DAB staining.

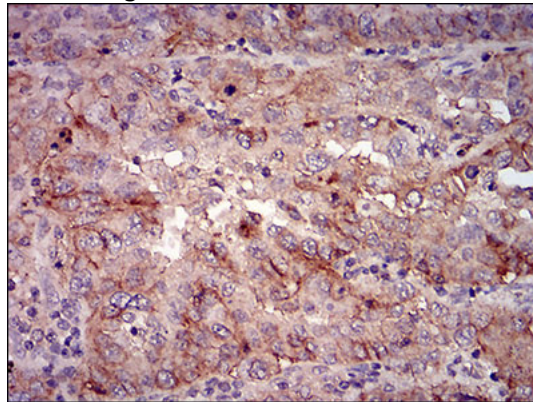


Figure 5: Immunohistochemical analysis of paraffin-embedded endometrial cancer tissues using mSplunc2 mouse mAb with DAB staining.

Bpifa2 Antibody - Background

The protein encoded by this gene is a plasma membrane protein that catalyzes the conversion of extracellular nucleotides to membrane-permeable nucleosides. The encoded protein is used as a determinant of lymphocyte differentiation. Defects in this gene can lead to the calcification of joints and arteries. Two transcript variants encoding different isoforms have been found for this gene. ;

Bpifa2 Antibody - References

1. Am J Physiol. 1997 Apr;272(4 Pt 1):G863-71. 2. Nucleic Acids Res. 1998 Jun 1;26(11):2761-70.