

**B2M Antibody**  
**Purified Mouse Monoclonal Antibody**  
**Catalog # AO1899a**

**Specification**

**B2M Antibody - Product Information**

Application	<b>E, WB, IF, FC, IHC</b>
Primary Accession	<a href="#">P61769</a>
Reactivity	<b>Human</b>
Host	<b>Mouse</b>
Clonality	<b>Monoclonal</b>
Isotype	<b>IgG1</b>
Calculated MW	<b>13.7kDa KDa</b>

**Description**

This gene encodes a serum protein found in association with the major histocompatibility complex (MHC) class I heavy chain on the surface of nearly all nucleated cells. The protein has a predominantly beta-pleated sheet structure that can form amyloid fibrils in some pathological conditions. A mutation in this gene has been shown to result in hypercatabolic hypoproteinemia.

**Immunogen**

Purified recombinant fragment of human B2M (AA: 21-100) expressed in E. Coli.

**Formulation**

Purified antibody in PBS with 0.05% sodium azide.

**B2M Antibody - Additional Information**

**Gene ID** 567

**Other Names**

Beta-2-microglobulin, Beta-2-microglobulin form pI 5.3, B2M

**Dilution**

E~~1/10000  
WB~~1/500 - 1/2000  
IF~~1/200 - 1/1000  
FC~~1/200 - 1/400  
IHC~~1/200 - 1/1000

**Storage**

Maintain refrigerated at 2-8°C for up to 6 months. For long term storage store at -20°C in small aliquots to prevent freeze-thaw cycles.

**Precautions**

B2M Antibody is for research use only and not for use in diagnostic or therapeutic procedures.

**B2M Antibody - Protein Information**

Name B2M ([HGNC:914](#))

### Function

Component of the class I major histocompatibility complex (MHC). Involved in the presentation of peptide antigens to the immune system. Exogenously applied M.tuberculosis EsxA or EsxA-EsxB (or EsxA expressed in host) binds B2M and decreases its export to the cell surface (total protein levels do not change), probably leading to defects in class I antigen presentation (PubMed:<a href="http://www.uniprot.org/citations/25356553" target="\_blank">25356553</a>).

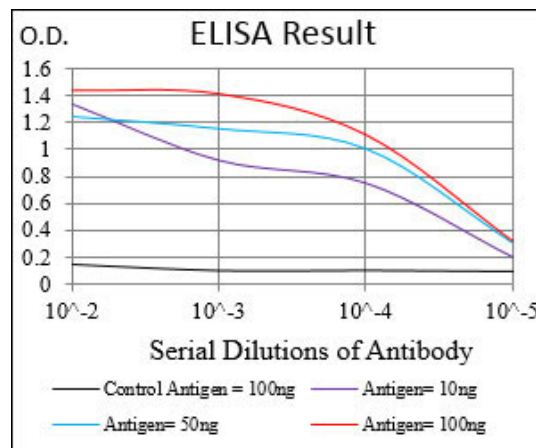
### Cellular Location

Secreted. Cell surface. Note=Detected in serum and urine (PubMed:1336137, PubMed:7554280). {ECO:0000269|PubMed:7554280, ECO:0000269|Ref.6}

## B2M Antibody - Protocols

Provided below are standard protocols that you may find useful for product applications.

- [Western Blot](#)
- [Blocking Peptides](#)
- [Dot Blot](#)
- [Immunohistochemistry](#)
- [Immunofluorescence](#)
- [Immunoprecipitation](#)
- [Flow Cytometry](#)
- [Cell Culture](#)



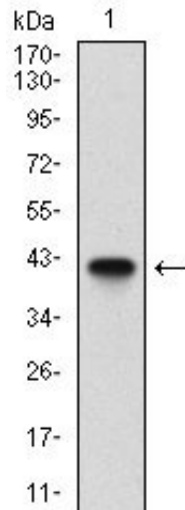


Figure 1: Western blot analysis using B2M mAb against human B2M (AA: 21-100) recombinant protein. (Expected MW is 35.4 kDa)

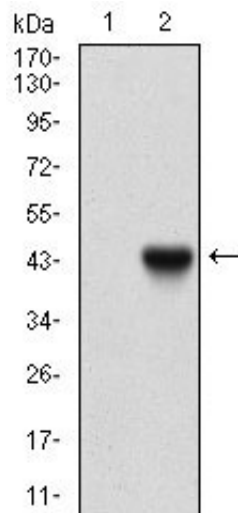


Figure 2: Western blot analysis using B2M mAb against HEK293 (1) and B2M (AA: 21-100)-hIgGfC transfected HEK293 (2) cell lysate.

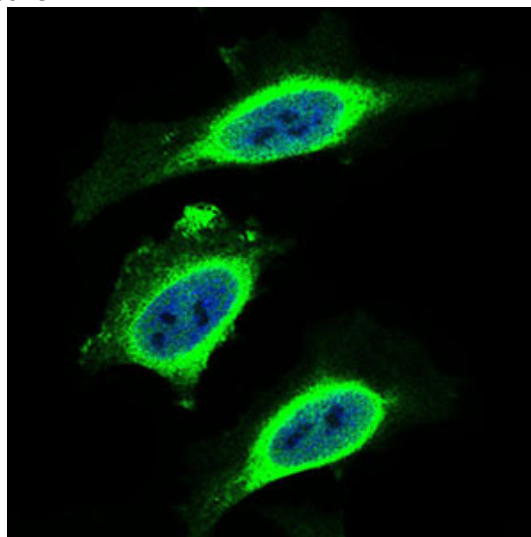


Figure 3: Immunofluorescence analysis of HeLa cells using B2M mouse mAb (green). Blue: DRAQ5 fluorescent DNA dye. Secondary antibody from Fisher (Cat#: 35503)

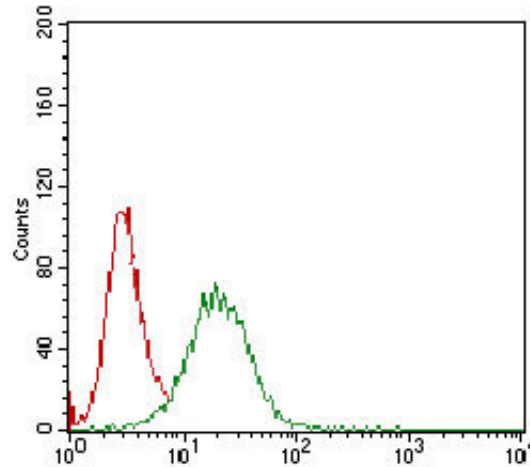


Figure 4: Flow cytometric analysis of A431 cells using B2M mouse mAb (green) and negative control (red).

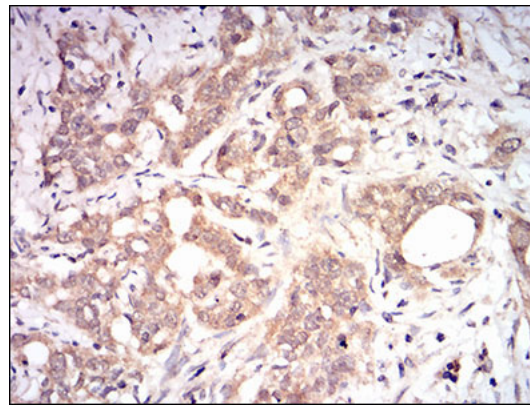


Figure 5: Immunohistochemical analysis of paraffin-embedded cervical cancer tissues using B2M mouse mAb with DAB staining.

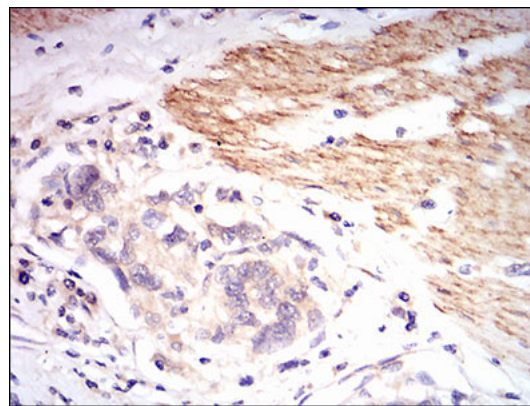


Figure 6: Immunohistochemical analysis of paraffin-embedded esophageal cancer tissues using B2M mouse mAb with DAB staining.

### B2M Antibody - Background

The protein encoded by this gene is a transmembrane (type I) heparan sulfate proteoglycan and is a member of the syndecan proteoglycan family. The syndecans mediate cell binding, cell signaling, and cytoskeletal organization and syndecan receptors are required for internalization of the HIV-1 tat protein. The syndecan-1 protein functions as an integral membrane protein and participates in cell proliferation, cell migration and cell-matrix interactions via its receptor for extracellular matrix proteins. Altered syndecan-1 expression has been detected in several different tumor types. While several transcript variants may exist for this gene, the full-length nature of only two have been

described to date. These two represent the major variants of this gene and encode the same protein.  
; ; ; ; ;

### **B2M Antibody - References**

1. Cancer Immunol Immunother. 2012 Sep;61(9):1359-71.
2. Lupus. 2012 Sep;21(10):1098-104.