

**MAPK14 Antibody**  
**Purified Mouse Monoclonal Antibody**  
**Catalog # AO1796a**

**Specification**

**MAPK14 Antibody - Product Information**

Application	E, WB, IF, FC, IHC
Primary Accession	<a href="#">O16539</a>
Reactivity	Human
Host	Mouse
Clonality	Monoclonal
Isotype	IgG1
Calculated MW	41.3kDa KDa

**Description**

The protein encoded by this gene is a member of the MAP kinase family. MAP kinases act as an integration point for multiple biochemical signals, and are involved in a wide variety of cellular processes such as proliferation, differentiation, transcription regulation and development. This kinase is activated by various environmental stresses and proinflammatory cytokines. The activation requires its phosphorylation by MAP kinase kinases (MKKs), or its autophosphorylation triggered by the interaction of MAP3K7IP1/TAB1 protein with this kinase. The substrates of this kinase include transcription regulator ATF2, MEF2C, and MAX, cell cycle regulator CDC25B, and tumor suppressor p53, which suggest the roles of this kinase in stress related transcription and cell cycle regulation, as well as in genotoxic stress response. Four alternatively spliced transcript variants of this gene encoding distinct isoforms have been reported.

**Immunogen**

Purified recombinant fragment of human MAPK14 (AA: 299-360) expressed in E. Coli.

**Formulation**

Purified antibody in PBS with 0.05% sodium azide

**MAPK14 Antibody - Additional Information**

**Gene ID** 1432

**Other Names**

Mitogen-activated protein kinase 14, MAP kinase 14, MAPK 14, 2.7.11.24, Cytokine suppressive anti-inflammatory drug-binding protein, CSAID-binding protein, CSBP, MAP kinase MXI2, MAX-interacting protein 2, Mitogen-activated protein kinase p38 alpha, MAP kinase p38 alpha, Stress-activated protein kinase 2a, SAPK2a, MAPK14, CSBP, CSBP1, CSBP2, CSPB1, MXI2, SAPK2A

**Dilution**

E~~1/10000  
WB~~1/500 - 1/2000  
IF~~1/75  
FC~~1/200 - 1/400  
IHC~~1/200 - 1/1000

**Storage**

Maintain refrigerated at 2-8°C for up to 6 months. For long term storage store at -20°C in small aliquots to prevent freeze-thaw cycles.

### Precautions

MAPK14 Antibody is for research use only and not for use in diagnostic or therapeutic procedures.

## MAPK14 Antibody - Protein Information

Name MAPK14 ([HGNC:6876](#))

### Function

Serine/threonine kinase which acts as an essential component of the MAP kinase signal transduction pathway. MAPK14 is one of the four p38 MAPKs which play an important role in the cascades of cellular responses evoked by extracellular stimuli such as pro-inflammatory cytokines or physical stress leading to direct activation of transcription factors. Accordingly, p38 MAPKs phosphorylate a broad range of proteins and it has been estimated that they may have approximately 200 to 300 substrates each. Some of the targets are downstream kinases which are activated through phosphorylation and further phosphorylate additional targets. RPS6KA5/MSK1 and RPS6KA4/MSK2 can directly phosphorylate and activate transcription factors such as CREB1, ATF1, the NF-kappa-B isoform RELA/NFKB3, STAT1 and STAT3, but can also phosphorylate histone H3 and the nucleosomal protein HMG1 (PubMed: [9687510](http://www.uniprot.org/citations/9687510), PubMed: [9792677](http://www.uniprot.org/citations/9792677)). RPS6KA5/MSK1 and RPS6KA4/MSK2 play important roles in the rapid induction of immediate-early genes in response to stress or mitogenic stimuli, either by inducing chromatin remodeling or by recruiting the transcription machinery (PubMed: [9687510](http://www.uniprot.org/citations/9687510), PubMed: [9792677](http://www.uniprot.org/citations/9792677)). On the other hand, two other kinase targets, MAPKAPK2/MK2 and MAPKAPK3/MK3, participate in the control of gene expression mostly at the post-transcriptional level, by phosphorylating ZFP36 (tristetraprolin) and ELAVL1, and by regulating EEF2K, which is important for the elongation of mRNA during translation. MNK1/MNK1 and MNK2/MNK2, two other kinases activated by p38 MAPKs, regulate protein synthesis by phosphorylating the initiation factor EIF4E2 (PubMed: [11154262](http://www.uniprot.org/citations/11154262)). MAPK14 interacts also with casein kinase II, leading to its activation through autophosphorylation and further phosphorylation of TP53/p53 (PubMed: [10747897](http://www.uniprot.org/citations/10747897)). In the cytoplasm, the p38 MAPK pathway is an important regulator of protein turnover. For example, CFLAR is an inhibitor of TNF-induced apoptosis whose proteasome-mediated degradation is regulated by p38 MAPK phosphorylation. In a similar way, MAPK14 phosphorylates the ubiquitin ligase SIAH2, regulating its activity towards EGLN3 (PubMed: [17003045](http://www.uniprot.org/citations/17003045)). MAPK14 may also inhibit the lysosomal degradation pathway of autophagy by interfering with the intracellular trafficking of the transmembrane protein ATG9 (PubMed: [19893488](http://www.uniprot.org/citations/19893488)). Another function of MAPK14 is to regulate the endocytosis of membrane receptors by different mechanisms that impinge on the small GTPase RAB5A. In addition, clathrin-mediated EGFR internalization induced by inflammatory cytokines and UV irradiation depends on MAPK14-mediated phosphorylation of EGFR itself as well as of RAB5A effectors (PubMed: [16932740](http://www.uniprot.org/citations/16932740)). Ectodomain shedding of transmembrane proteins is regulated by p38 MAPKs as well. In response to inflammatory stimuli, p38 MAPKs phosphorylate the membrane-associated metalloprotease ADAM17 (PubMed: [20188673](http://www.uniprot.org/citations/20188673)). Such phosphorylation is required for ADAM17-mediated ectodomain shedding of TGF-alpha family ligands, which results in the activation of EGFR signaling and cell proliferation. Another p38 MAPK substrate is FGFR1. FGFR1 can be translocated from the

extracellular space into the cytosol and nucleus of target cells, and regulates processes such as rRNA synthesis and cell growth. FGFR1 translocation requires p38 MAPK activation. In the nucleus, many transcription factors are phosphorylated and activated by p38 MAPKs in response to different stimuli. Classical examples include ATF1, ATF2, ATF6, ELK1, PTPRH, DDIT3, TP53/p53 and MEF2C and MEF2A (PubMed:<a href="http://www.uniprot.org/citations/10330143" target="\_blank">10330143</a>, PubMed:<a href="http://www.uniprot.org/citations/9430721" target="\_blank">9430721</a>, PubMed:<a href="http://www.uniprot.org/citations/9858528" target="\_blank">9858528</a>). The p38 MAPKs are emerging as important modulators of gene expression by regulating chromatin modifiers and remodelers. The promoters of several genes involved in the inflammatory response, such as IL6, IL8 and IL12B, display a p38 MAPK-dependent enrichment of histone H3 phosphorylation on 'Ser-10' (H3S10ph) in LPS-stimulated myeloid cells. This phosphorylation enhances the accessibility of the cryptic NF-kappa-B-binding sites marking promoters for increased NF- kappa-B recruitment. Phosphorylates CDC25B and CDC25C which is required for binding to 14-3-3 proteins and leads to initiation of a G2 delay after ultraviolet radiation (PubMed:<a href="http://www.uniprot.org/citations/11333986" target="\_blank">11333986</a>). Phosphorylates TIAR following DNA damage, releasing TIAR from GADD45A mRNA and preventing mRNA degradation (PubMed:<a href="http://www.uniprot.org/citations/20932473" target="\_blank">20932473</a>). The p38 MAPKs may also have kinase- independent roles, which are thought to be due to the binding to targets in the absence of phosphorylation. Protein O-Glc-N-acylation catalyzed by the OGT is regulated by MAPK14, and, although OGT does not seem to be phosphorylated by MAPK14, their interaction increases upon MAPK14 activation induced by glucose deprivation. This interaction may regulate OGT activity by recruiting it to specific targets such as neurofilament H, stimulating its O-Glc-N-acylation. Required in mid- fetal development for the growth of embryo-derived blood vessels in the labyrinth layer of the placenta. Also plays an essential role in developmental and stress-induced erythropoiesis, through regulation of EPO gene expression (PubMed:<a href="http://www.uniprot.org/citations/10943842" target="\_blank">10943842</a>). Isoform MXI2 activation is stimulated by mitogens and oxidative stress and only poorly phosphorylates ELK1 and ATF2. Isoform EXIP may play a role in the early onset of apoptosis. Phosphorylates S100A9 at 'Thr-113' (PubMed:<a href="http://www.uniprot.org/citations/15905572" target="\_blank">15905572</a>). Phosphorylates NLRP1 downstream of MAP3K20/ZAK in response to UV-B irradiation and ribosome collisions, promoting activation of the NLRP1 inflammasome and pyroptosis (PubMed:<a href="http://www.uniprot.org/citations/35857590" target="\_blank">35857590</a>).

#### Cellular Location

Cytoplasm. Nucleus

#### Tissue Location

Brain, heart, placenta, pancreas and skeletal muscle. Expressed to a lesser extent in lung, liver and kidney

### MAPK14 Antibody - Protocols

Provided below are standard protocols that you may find useful for product applications.

- [Western Blot](#)
- [Blocking Peptides](#)
- [Dot Blot](#)
- [Immunohistochemistry](#)
- [Immunofluorescence](#)
- [Immunoprecipitation](#)
- [Flow Cytometry](#)
- [Cell Culture](#)

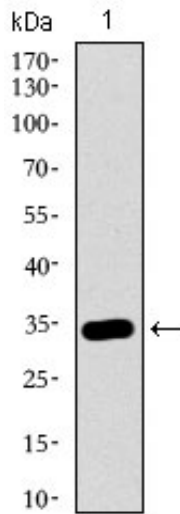
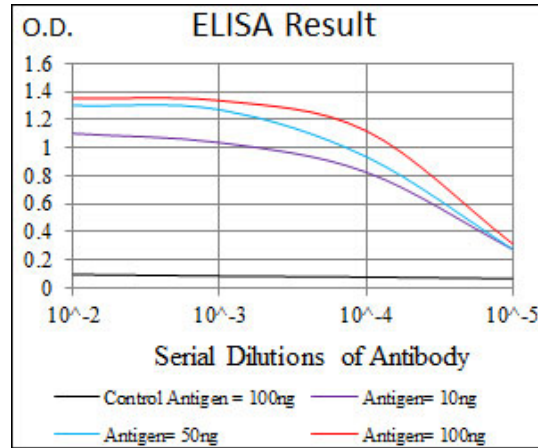


Figure 1: Western blot analysis using MAPK14 mAb against human MAPK14 recombinant protein. (Expected MW is 33 kDa)

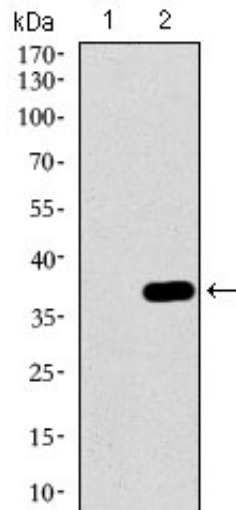


Figure 2: Western blot analysis using MAPK14 mAb against HEK293 (1) and MAPK14 (AA: 299-360)-hlgGfc transfected HEK293 (2) cell lysate.

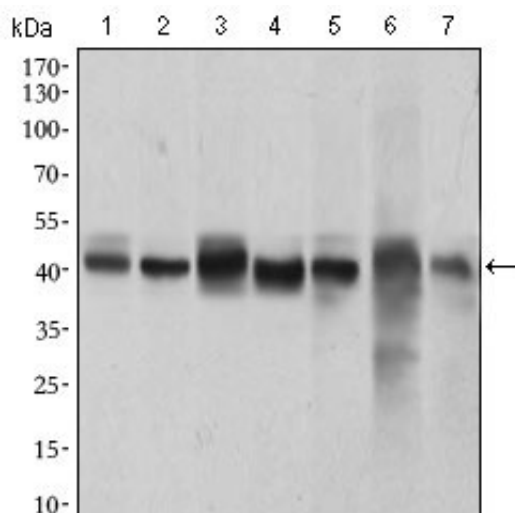


Figure 3: Western blot analysis using MAPK14 mouse mAb against HeLa (1), NIH/3T3 (2), Jurkat (3), Raw264.7 (4), PC-12 (5), C6 (6) and COS7 (7) cell lysate.

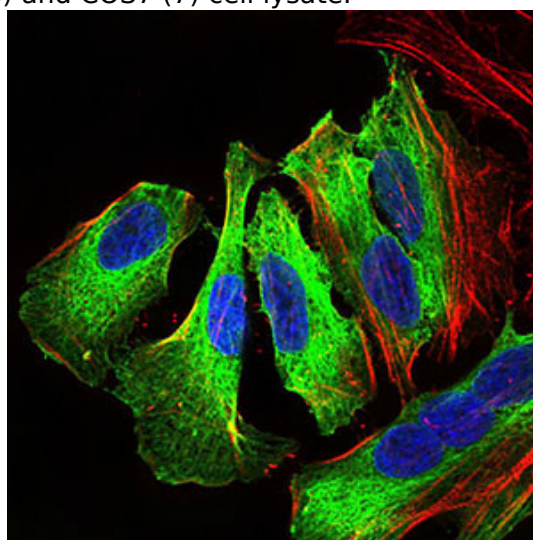


Figure 4: Immunofluorescence analysis of HeLa cells using MAPK14 mouse mAb (green). Blue: DRAQ5 fluorescent DNA dye. Red: Actin filaments have been labeled with Alexa Fluor-555 phalloidin.

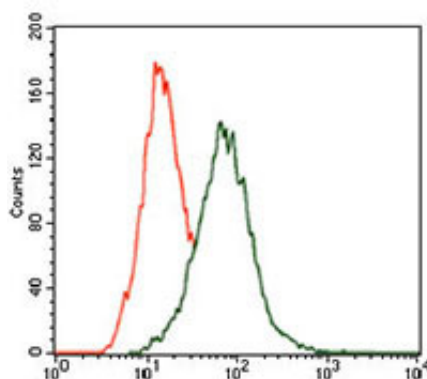


Figure 5: Flow cytometric analysis of HeLa cells using MAPK14 mouse mAb (green) and negative control (red).



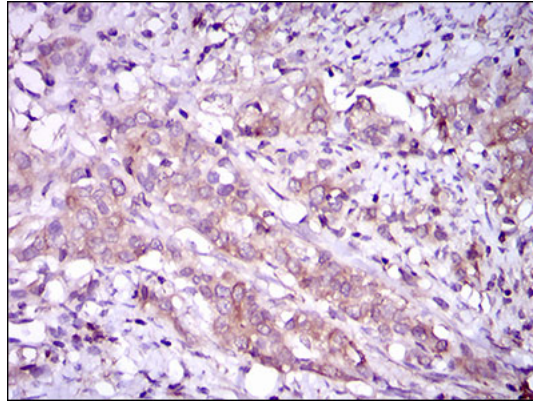


Figure 6: Immunohistochemical analysis of paraffin-embedded cervical cancer tissues using MAPK14 mouse mAb with DAB staining.

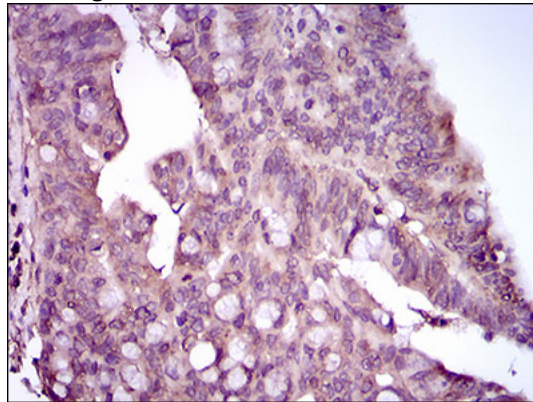


Figure 7: Immunohistochemical analysis of paraffin-embedded rectum cancer tissues using MAPK14 mouse mAb with DAB staining.

### MAPK14 Antibody - Background

The protein encoded by this gene is a member of the fibroblast growth factor (FGF) family. FGF family members possess broad mitogenic and cell survival activities and are involved in a variety of biological processes including embryonic development, cell growth, morphogenesis, tissue repair, tumor growth and invasion. This gene was identified by its oncogenic transforming activity. This gene and FGF3, another oncogenic growth factor, are located closely on chromosome 11. Co-amplification of both genes was found in various kinds of human tumors. Studies on the mouse homolog suggested a function in bone morphogenesis and limb development through the sonic hedgehog (SHH) signaling pathway.

### MAPK14 Antibody - References

1. Cytokine. 2012 Oct;60(1):114-21.
2. Clin Cancer Res. 2012 Aug 1;18(15):4037-47.