

**SST Antibody**  
**Purified Mouse Monoclonal Antibody**  
**Catalog # AO1764a**

**Specification**

**SST Antibody - Product Information**

Application	<b>E, WB, FC, IHC</b>
Primary Accession	<a href="#">P61278</a>
Reactivity	<b>Human</b>
Host	<b>Mouse</b>
Clonality	<b>Monoclonal</b>
Isotype	<b>IgG1</b>
Calculated MW	<b>12.7kDa KDa</b>

**Description**

The preproprotein encoded by this gene. Somatostatin is expressed throughout the body and inhibits the release of numerous secondary hormones by binding to high-affinity G-protein-coupled somatostatin receptors. This hormone is an important regulator of the endocrine system through its interactions with pituitary growth hormone, thyroid stimulating hormone, and most hormones of the gastrointestinal tract. Somatostatin also affects rates of neurotransmission in the central nervous system and proliferation of both normal and tumorigenic cells.

**Immunogen**

Purified recombinant fragment of human SST (AA: 1-116) expressed in E. Coli.

**Formulation**

Purified antibody in PBS with 0.05% sodium azide

**SST Antibody - Additional Information**

**Gene ID** 6750

**Other Names**

Somatostatin, Growth hormone release-inhibiting factor, Somatostatin-28, Somatostatin-14, SST

**Dilution**

E~~1/10000  
WB~~1/500 - 1/2000  
FC~~1/200 - 1/400  
IHC~~1/200 - 1/1000

**Storage**

Maintain refrigerated at 2-8°C for up to 6 months. For long term storage store at -20°C in small aliquots to prevent freeze-thaw cycles.

**Precautions**

SST Antibody is for research use only and not for use in diagnostic or therapeutic procedures.

**SST Antibody - Protein Information**

## Name SST

### Function

[Somatostatin-14]: Inhibits the secretion of pituitary hormones, including that of growth hormone/somatotropin (GH1), PRL, ACTH, luteinizing hormone (LH) and TSH. Also impairs ghrelin- and GnRH- stimulated secretion of GH1 and LH; the inhibition of ghrelin- stimulated secretion of GH1 can be further increased by neuronostatin.

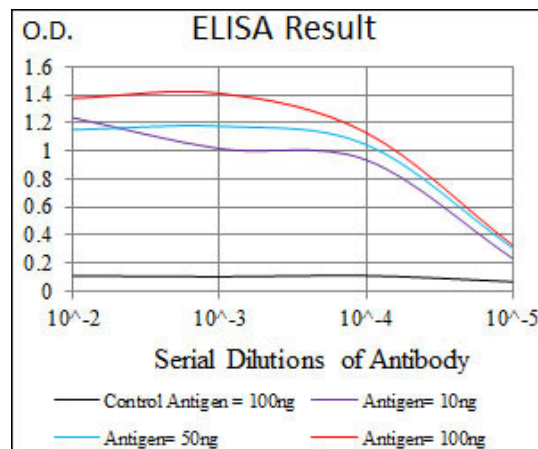
### Cellular Location

Secreted {ECO:0000250|UniProtKB:P60042}.

## SST Antibody - Protocols

Provided below are standard protocols that you may find useful for product applications.

- [Western Blot](#)
- [Blocking Peptides](#)
- [Dot Blot](#)
- [Immunohistochemistry](#)
- [Immunofluorescence](#)
- [Immunoprecipitation](#)
- [Flow Cytometry](#)
- [Cell Culture](#)



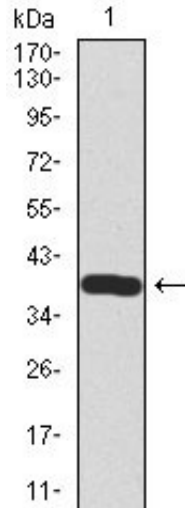


Figure 1: Western blot analysis using SST mAb against human SST recombinant protein. (Expected MW is 38.2 kDa)

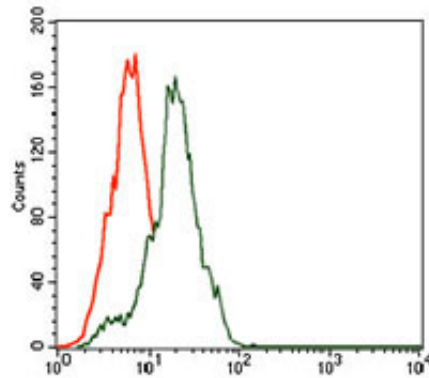


Figure 2: Flow cytometric analysis of HepG2 cells using SST mouse mAb (green) and negative control (red).

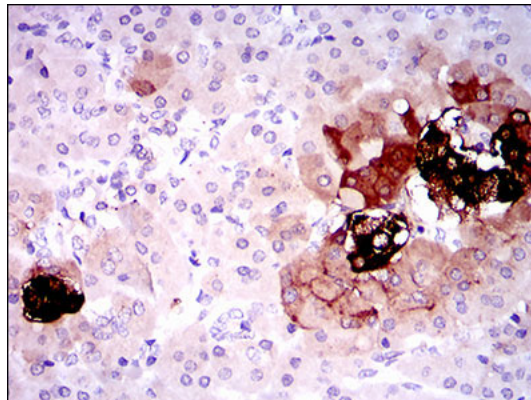


Figure 3: Immunohistochemical analysis of paraffin-embedded pancreas tissues using SST mouse mAb with DAB staining.

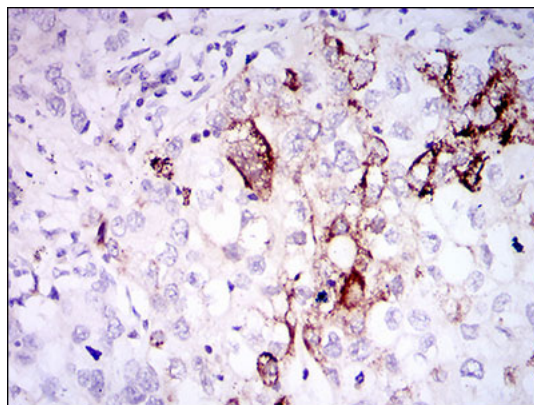


Figure 4: Immunohistochemical analysis of paraffin-embedded lung cancer tissues using SST mouse mAb with DAB staining.

### SST Antibody - References

1. Acta Neurol Scand. 2010 Apr;121(4):225-9.
2. Endocrinology. 2009 May;150(5):2254-63.